

INSTRUMENT APPROACH CHART

RJCO / SAPPORO

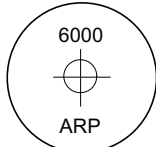
RNP RWY32

SAPPORO APP 119.225 - 121.075 315.9	RNP APCH MSAS CH66537 M32A	SAPPORO TWR 118.1 - 126.2 - 140.5 138.05 - 121.8G	GCA AVBL CALL SAPPORO APP
-------------------------------------------	----------------------------------	---------------------------------------------------------	---------------------------------

Baro-VNAV not authorized below -15°

VAR 10°W

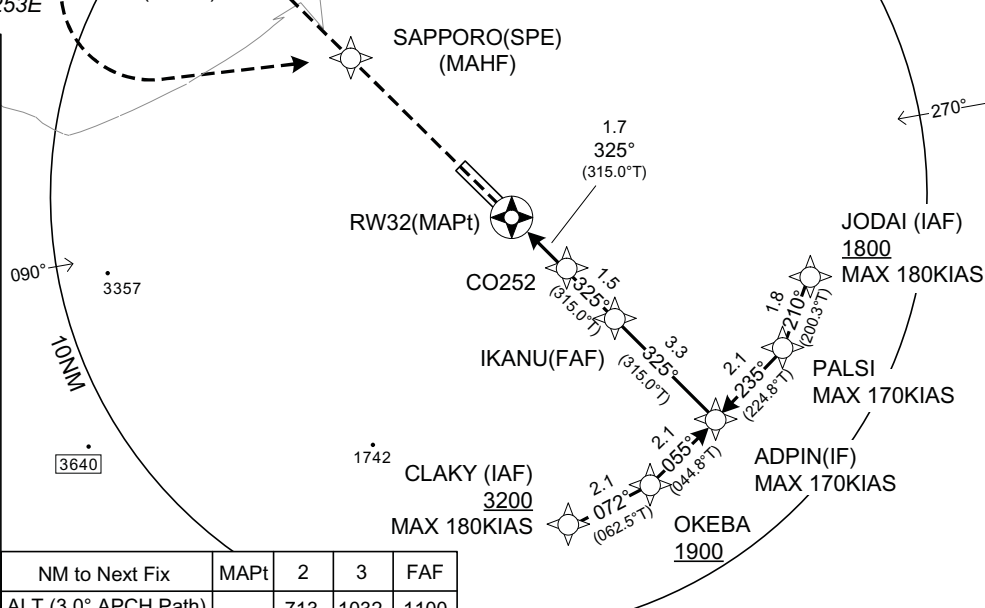
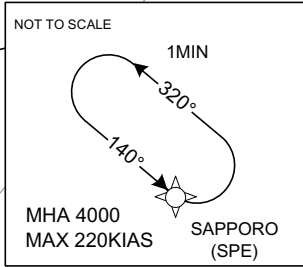
MSA 25NM



ARP: 430703N/1412253E

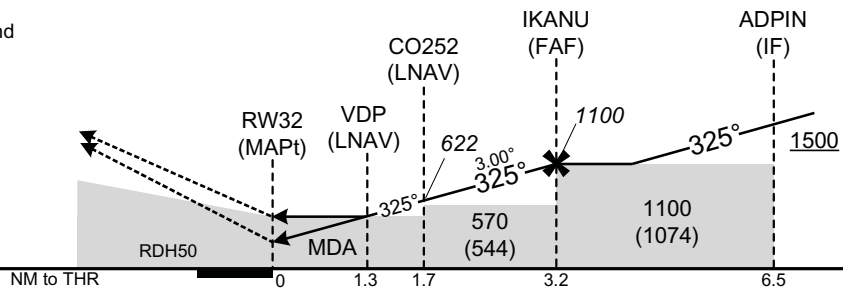
CLAKY (IAF)	425942.20N 1412500.34E
OKEBA	430040.24N 1412732.82E
JODAI (IAF)	430519.54N 1413226.71E
PALSI	430338.77N 1413135.58E
ADPIN (IF)	430209.52N 1412934.15E
IKANU (FAF)	430429.45N 1412622.74E
CO252	430533.00N 1412455.68E
RW32 (MAPt)	430645.58N 1412316.16E
CO253 (MATF)	431329.07N 1411401.12E
SPE (MAHF)	431028.71N 1411808.58E

NM to Next Fix	MAPt	2	3	FAF
ALT (3.0° APCH Path)	-	713	1032	1100



MISSED APPROACH

Direct to CO253, turn left direct to SPE and hold at 4000FT.
Contact SAPPORO APP.



CAT	LPV		LNAV/VNAV		LNAV		CIRCLING	
	DA(H)	RVR/CMV	DA(H)	RVR/CMV	MDA(H)	RVR/CMV	MDA(H)	VIS
A	318(291)	1500	460(433)	1500	460(434)	1500	600(574)	1600
B	328(301)							
C	337(310)	1800		1800		1800		2400
D	-	-	-	-	-	-	-	-

Circling to EAST side of RWY only.

CHANGE : Missed APCH for using VOR/DME abolished. HLDG pattern for using NAV AID abolished.

INSTRUMENT APPROACH CHART

RJCO / SAPPORO

RNP RWY32

FAS DATA BLOCK

Operation type	0	LTP/FTP ellipsoidal height	+00394
SBAS service provider identifier	2	FPAP Latitude	430724.3050N
Airport identifier	RJCO	FPAP Longitude	1412223.0240E
Runway	32	Threshold crossing height	00015.0
Approach performance designator	0	TCH units selector	1
Route indicator		Glide path angle	03.00
Reference path data selector	0	Course width at threshold	105.00
Reference path ID	M32A	∠ length offset	0192
LTP/FTP latitude	430645.5665N	HAL	40.00
LTP/FTP longitude	1412316.1770E	VAL	50.00
CRC remainder	56210C49		

Required additional data

LTP/FTP orthometric height	7.7
----------------------------	-----

CHANGE : Description of FAS DATA BLOCK ITEM(CRC remainder).