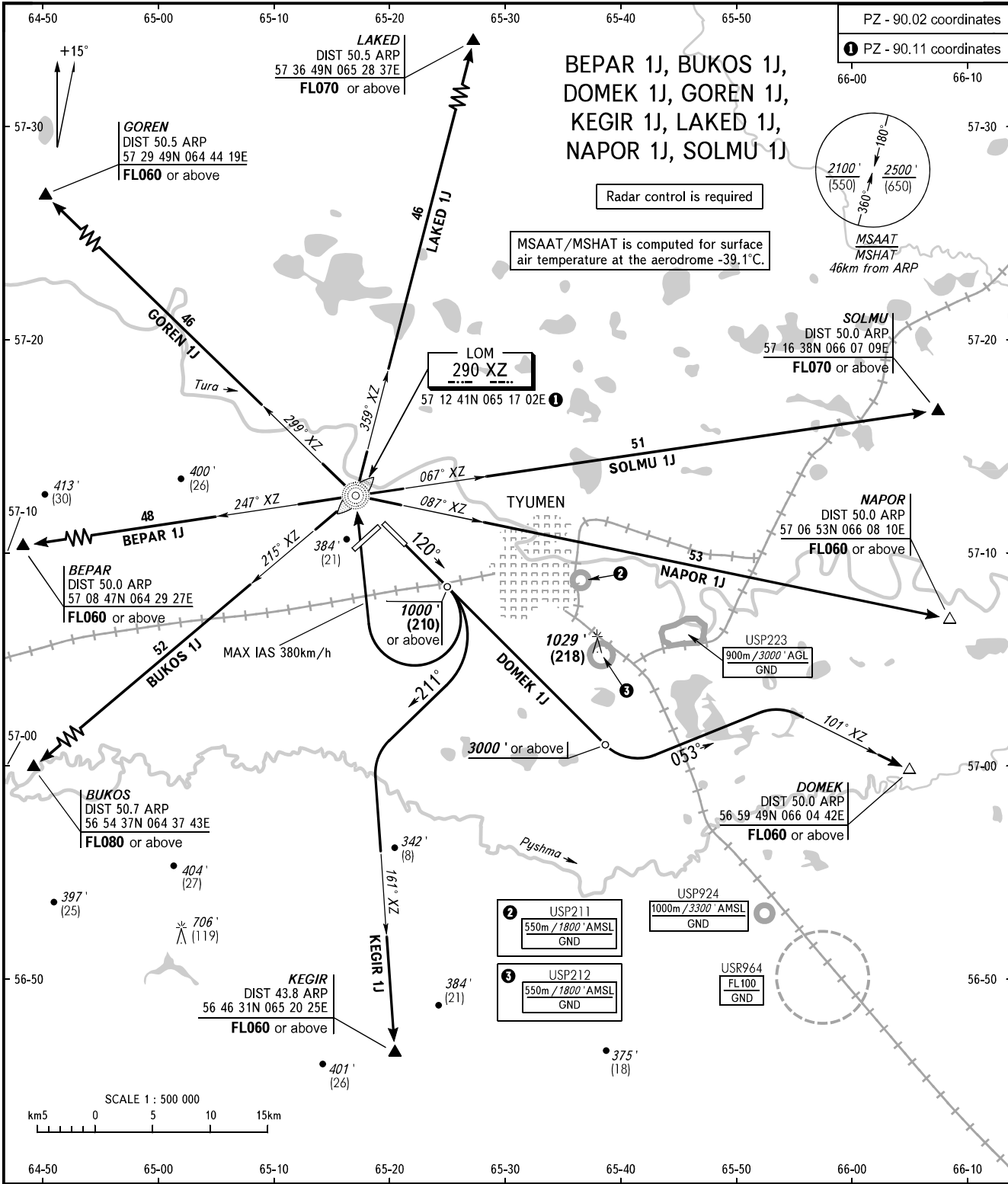


STANDARD DEPARTURE CHART  
INSTRUMENT (SID) - ICAO

TYUMEN, RUSSIA  
ROSHCHINO  
RWY 12

TRANSITION  
ALTITUDE : 3000'



START **118.200**  
RADAR **126.100**

**WARNING**  
Turn before passing DER is PROHIBITED.

BEARINGS AND TRACKS ARE MAGNETIC  
ALTITUDES IN FEET  
HEIGHTS IN METRES  
ELEVATION IN FEET AND METRES  
DISTANCES IN KILOMETRES

Alt set: -QNH(QFE on req);  
-hPa(mm on req).

CHANGE: New chart