

| | | |
|---|------------------------|---|
| LOC/DME I-RNE 109.1 Chan 28 | APP CRS 061° | Rwy Idg 5765 TDZE 38 Apt Elev 47 |
|---|------------------------|---|

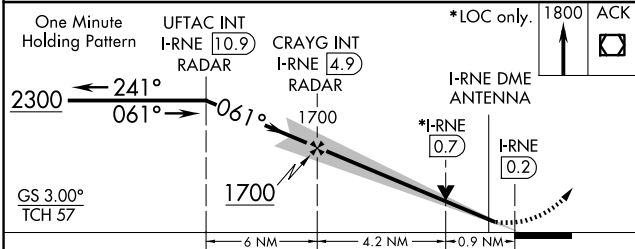
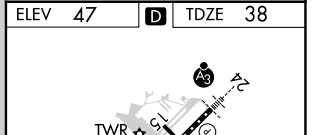
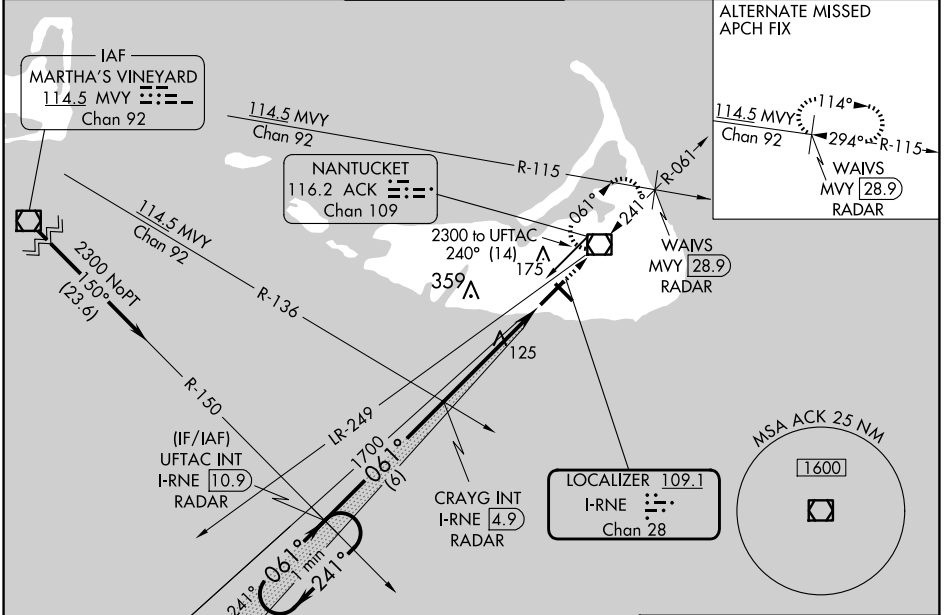
ILS or LOC RWY 6

NANTUCKET MEML (ACK)

When local altimeter not received, use Hyannis altimeter setting and increase S-ILS 6 DA to 301 and all MDA 80 feet; increase S-LOC 6 Cats C/D visibility to RVR 5000 and Circling Cats C/D visibility 1/4 SM. Inop table does not apply to S-ILS 6. For inop ALS, increase S-LOC 6 Cat D visibility to RVR 5500. For inop ALS when using Hyannis altimeter setting, increase S-ILS 6 all Cats visibility to RVR 4500 and S-LOC 6 Cat D visibility to 1/4 SM. VDP NA when using Hyannis altimeter setting.

MALSF
MISSED APPROACH:
Climb to 1800 direct
ACK VOR/DME and
hold, continue climb-
in-hold to 1800.

| | | | | | |
|----------------------|--------------------------------------|--|-------------------------|----------------------------|-------------------------|
| ATIS 127.5 | BOSTON APP CON 126.1 318.1 | NANTUCKET TOWER * 118.3 (CTAF) 0 | GND CON 132.5 | CLNC DEL 119.375 | UNICOM 122.95 |
|----------------------|--------------------------------------|--|-------------------------|----------------------------|-------------------------|



| CATEGORY | A | B | C | D |
|----------|-------------|-------------|---------------|-----------------|
| S-ILS 6 | | 238/40 | 200 (200-3/4) | |
| S-LOC 6 | | 380/40 | 342 (400-3/4) | |
| CIRCLING | 480-1 | 500-1 | 720-2 | 720-2 1/4 |
| | 433 (500-1) | 453 (500-1) | 673 (700-2) | 673 (700-2 1/4) |

| | | |
|--|---|---------|
| ELEV 47 | D | TDZE 38 |
| FAF to MAP 5.1 NM Knots: 60 90 120 150 180 Min:Sec: 5:06 3:24 2:33 2:02 1:42 | | |

NE-1, 20 MAR 2025 to 17 APR 2025

NE-1, 20 MAR 2025 to 17 APR 2025