

STANDARD DEPARTURE CHART -INSTRUMENT

RJAA / NARITA INTL

RNAV SID

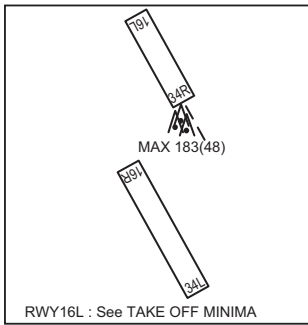
TETRA EIGHT DEPARTURE

RNAV1

Note 1) DME/DME/IRU or GNSS required.
 ※The aircraft equipped with only DME/DME/IRU must be able to update its position without delay at the starting point of take-off rolling.
 2) RADAR service required.

Critical DME	RWY16R : TLD DER - 1.3NM FM DER RWY16L : TLD DER - 3.4NM FM DER
DME GAP	RWY34L : DER - 1.3NM FM DER
Inappropriate NavAids	See AD1.1.6.10.3. Inappropriate NAVAIDs for RNAV1

VAR 8° W

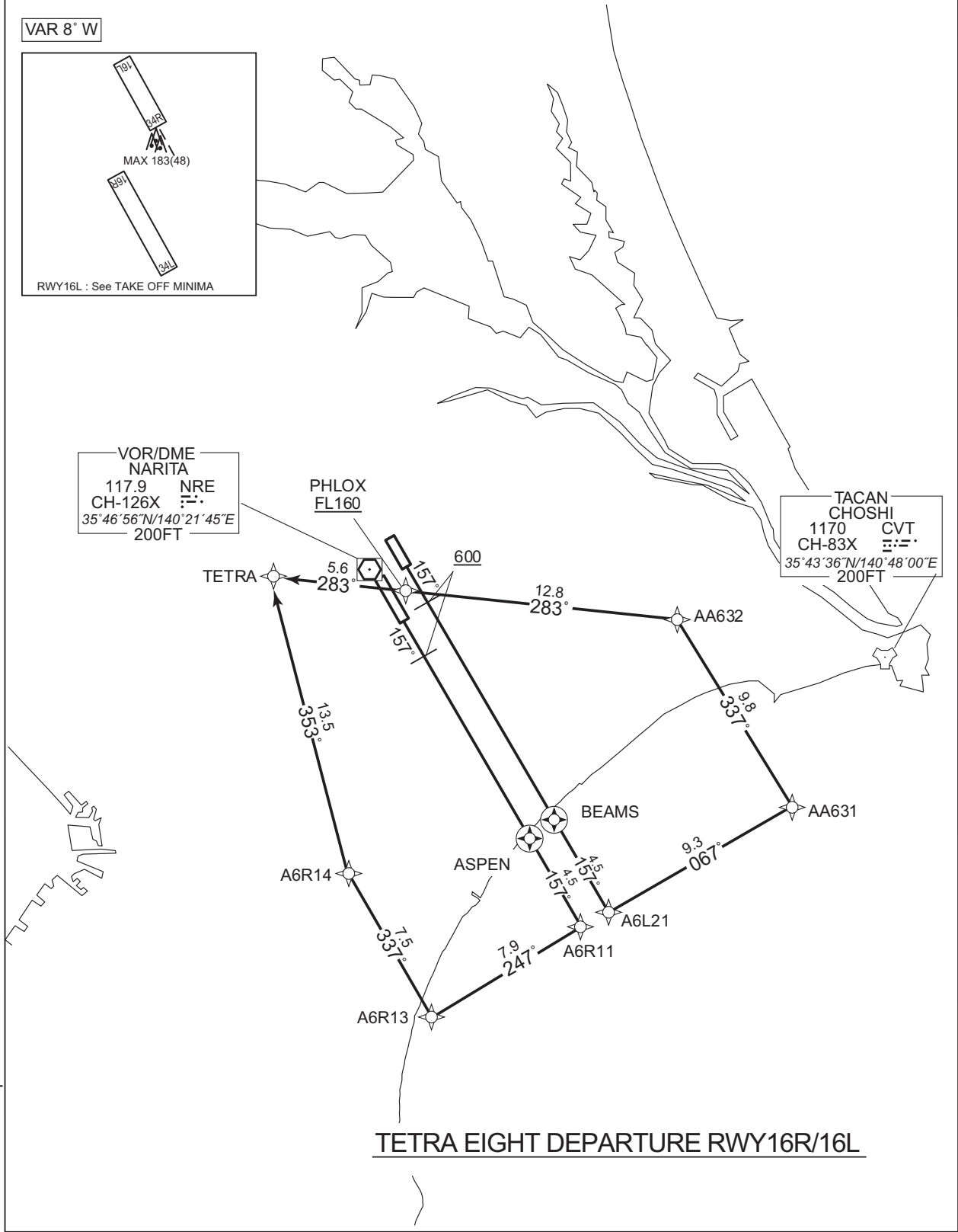


VOR/DME
NARITA
117.9 NRE
CH-126X
35°46'56"N/140°21'45"E
200FT

PHLOX
FL160

TACAN
CHOSHI
1170 CVT
CH-83X
35°43'36"N/140°48'00"E
200FT

CHANGE : Description of VAR.



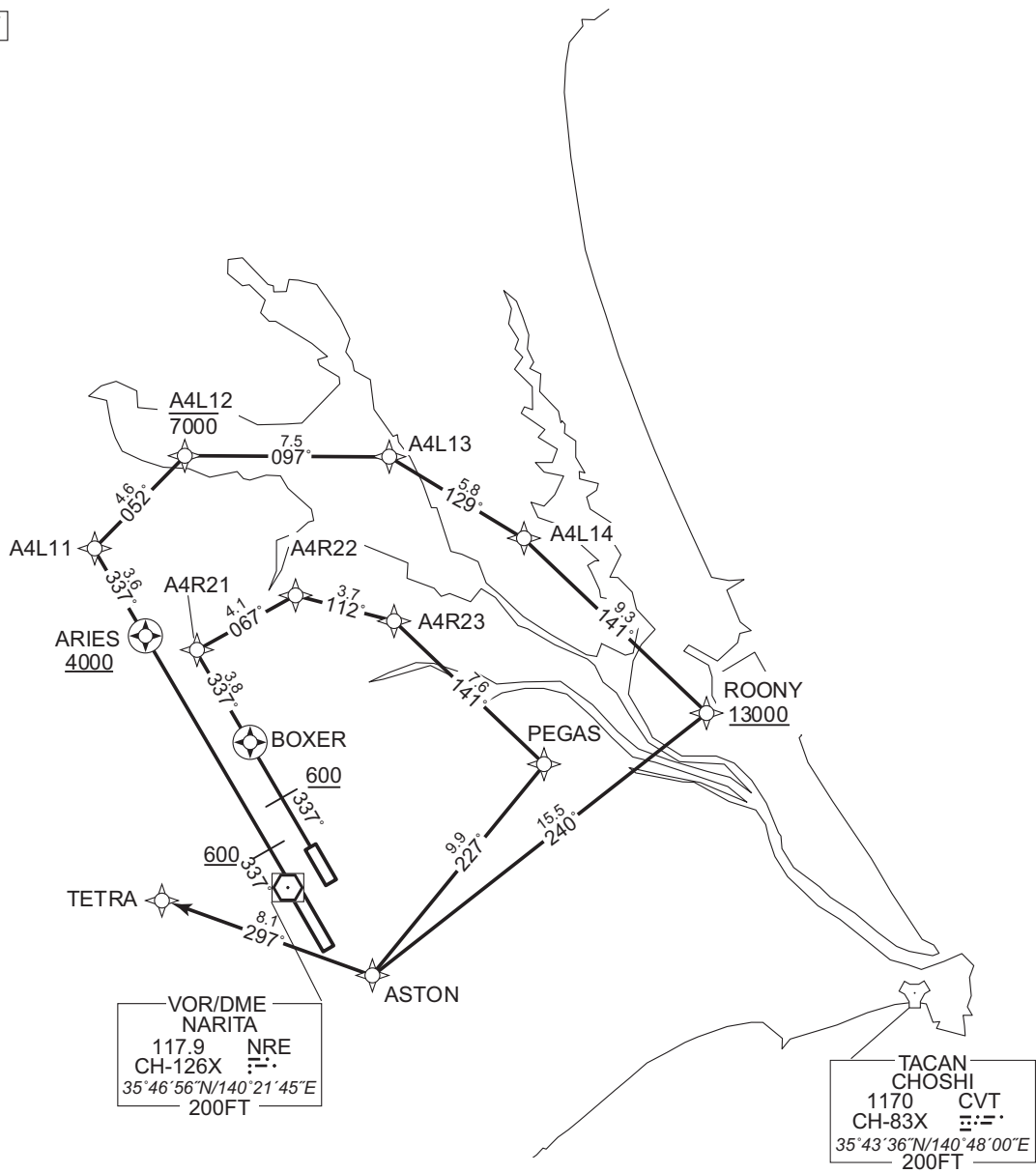
TETRA EIGHT DEPARTURE RWY16R/16L

STANDARD DEPARTURE CHART -INSTRUMENT

RJAA / NARITA INTL

RNAV SID

VAR 8° W



TETRA EIGHT DEPARTURE RWY34L/34R

CHANGE : Description of VAR.

STANDARD DEPARTURE CHART -INSTRUMENT

RJAA / NARITA INTL

RNAV SID

TETRA EIGHT DEPARTURE

RWY16R : Climb on HDG157° at or above 600FT, direct to ASPEN, to A6R11, to A6R13, to A6R14, to TETRA.

RWY16L : Climb on HDG157° at or above 600FT, direct to BEAMS, to A6L21, to AA631, to AA632, to PHLOX at or above FL160, to TETRA.

RWY34L : Climb on HDG337° at or above 600FT, direct to ARIES at or above 4000FT, to A4L11, to A4L12 at or below 7000FT, to A4L13, to A4L14, to ROONY at or above 13000FT, to ASTON, to TETRA.

RWY34R : Climb on HDG337° at or above 600FT, direct to BOXER, to A4R21, to A4R22, to A4R23, to PEGAS, to ASTON, to TETRA.

RWY16R *MUST be used for database coding.

Serial Number	Path Descriptor*	Waypoint Identifier	Fly Over	Course °M(^T)	Magnetic Variation	Distance (NM)	Turn Direction	Altitude (FT)	Speed (KIAS)	Vertical Angle	Navigation Specification
001	VA	-	-	157 (149.6)	-7.5	-	-	+600	-	-	RNAV1
002	DF	ASPEN	Y	-	-7.5	-	-	-	-	-	RNAV1
003	TF	A6R11	-	157 (149.7)	-7.5	4.5	-	-	-	-	RNAV1
004	TF	A6R13	-	247 (239.5)	-7.5	7.9	-	-	-	-	RNAV1
005	TF	A6R14	-	337 (329.6)	-7.5	7.5	-	-	-	-	RNAV1
006	TF	TETRA	-	353 (345.1)	-7.5	13.5	-	-	-	-	RNAV1

RWY16L *MUST be used for database coding.

Serial Number	Path Descriptor*	Waypoint Identifier	Fly Over	Course °M(^T)	Magnetic Variation	Distance (NM)	Turn Direction	Altitude (FT)	Speed (KIAS)	Vertical Angle	Navigation Specification
001	VA	-	-	157 (149.6)	-7.5	-	-	+600	-	-	RNAV1
002	DF	BEAMS	Y	-	-7.5	-	-	-	-	-	RNAV1
003	TF	A6L21	-	157 (149.7)	-7.5	4.5	-	-	-	-	RNAV1
004	TF	AA631	-	067 (059.5)	-7.5	9.3	-	-	-	-	RNAV1
005	TF	AA632	-	337 (329.8)	-7.5	9.8	-	-	-	-	RNAV1
006	TF	PHLOX	-	283 (275.3)	-7.5	12.8	-	+FL160	-	-	RNAV1
007	TF	TETRA	-	283 (275.1)	-7.5	5.6	-	-	-	-	RNAV1

CHANGE : ALT Restriction on A4R23. PROC renamed.

STANDARD DEPARTURE CHART -INSTRUMENT

RJAA / NARITA INTL

RNAV SID

RWY34L *MUST be used for database coding.											
Serial Number	Path Descriptor*	Waypoint Identifier	Fly Over	Course °M(°T)	Magnetic Variation	Distance (NM)	Turn Direction	Altitude (FT)	Speed (KIAS)	Vertical Angle	Navigation Specification
001	VA	-	-	337 (329.6)	-7.5	-	-	+600	-	-	RNAV1
002	DF	ARIES	Y	-	-7.5	-	-	+4000	-	-	RNAV1
003	TF	A4L11	-	337 (329.5)	-7.5	3.6	-	-	-	-	RNAV1
004	TF	A4L12	-	052 (044.3)	-7.5	4.6	-	-7000	-	-	RNAV1
005	TF	A4L13	-	097 (089.4)	-7.5	7.5	-	-	-	-	RNAV1
006	TF	A4L14	-	129 (121.2)	-7.5	5.8	-	-	-	-	RNAV1
007	TF	ROONY	-	141 (133.2)	-7.5	9.3	-	+13000	-	-	RNAV1
008	TF	ASTON	-	240 (232.1)	-7.5	15.5	-	-	-	-	RNAV1
009	TF	TETRA	-	297 (289.5)	-7.5	8.1	-	-	-	-	RNAV1

RWY34R *MUST be used for database coding.											
Serial Number	Path Descriptor*	Waypoint Identifier	Fly Over	Course °M(°T)	Magnetic Variation	Distance (NM)	Turn Direction	Altitude (FT)	Speed (KIAS)	Vertical Angle	Navigation Specification
001	VA	-	-	337 (329.6)	-7.5	-	-	+600	-	-	RNAV1
002	DF	BOXER	Y	-	-7.5	-	-	-	-	-	RNAV1
003	TF	A4R21	-	337 (329.6)	-7.5	3.8	-	-	-	-	RNAV1
004	TF	A4R22	-	067 (059.3)	-7.5	4.1	-	-	-	-	RNAV1
005	TF	A4R23	-	112 (104.6)	-7.5	3.7	-	-	-	-	RNAV1
006	TF	PEGAS	-	141 (133.4)	-7.5	7.6	-	-	-	-	RNAV1
007	TF	ASTON	-	227 (219.2)	-7.5	9.9	-	-	-	-	RNAV1
008	TF	TETRA	-	297 (289.5)	-7.5	8.1	-	-	-	-	RNAV1

CHANGE : ALT Restriction on A4R23

STANDARD DEPARTURE CHART -INSTRUMENT

RJAA / NARITA INTL

RNAV SID

Waypoint Coordinates

Waypoint Identifier	Coordinates	Waypoint Identifier	Coordinates
A4L11	355915.6N / 1401249.1E	AA631	353619.9N / 1404431.9E
A4L12	360232.6N / 1401646.8E	AA632	354446.7N / 1403828.9E
A4L13	360236.7N / 1402559.7E	ARIES	355607.4N / 1401505.9E
A4L14	355937.8N / 1403205.0E	ASPEN	353451.0N / 1403028.1E
A4R21	355529.4N / 1401729.2E	ASTON	354344.6N / 1402518.6E
A4R22	355734.5N / 1402150.1E	BEAMS	353533.0N / 1403153.1E
A4R23	355638.8N / 1402614.7E	BOXER	355213.0N / 1401951.6E
A6L21	353137.9N / 1403441.9E	PEGAS	355126.3N / 1403302.1E
A6R11	353056.9N / 1403316.2E	PHLOX	354556.6N / 1402246.1E
A6R13	352654.9N / 1402452.6E	ROONY	355317.4N / 1404024.4E
A6R14	353324.7N / 1402011.9E	TETRA	354626.4N / 1401555.8E

CHANGE : Update

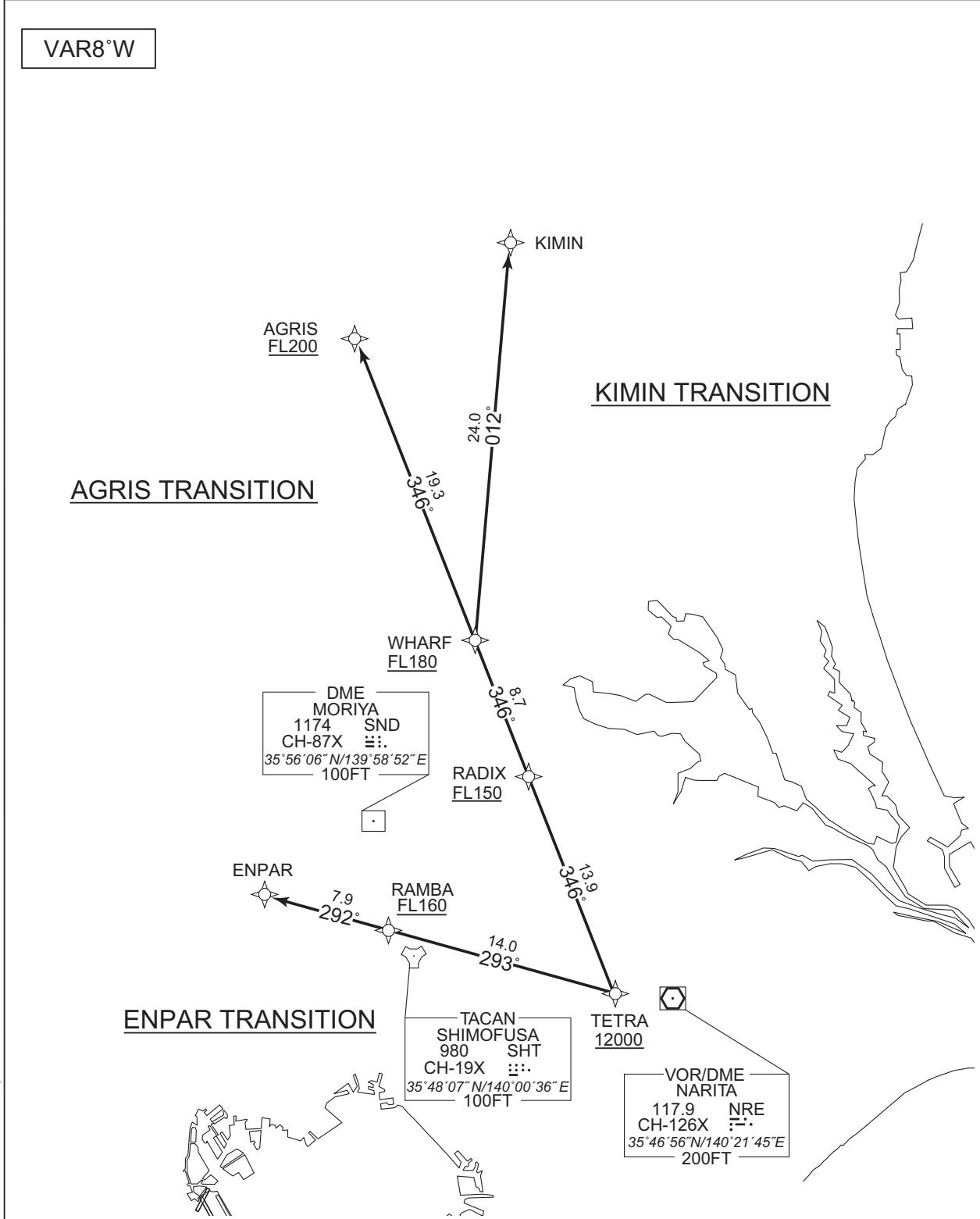
STANDARD DEPARTURE CHART -INSTRUMENT

RJAA / NARITA INTL

RNAV TRANSITION

AGRIS TRANSITION /KIMIN TRANSITION / ENPAR TRANSITION		RNAV1
Note 1) DME/DME/IRU or GNSS required. 2) RADAR service required.	Critical DME	-
	DME GAP	-
	Inappropriate Nav aids	See AD1.1.6.10.3.Inappropriate NAVAIDs for RNAV1

VAR8°W



CHANGE : Description of VAR.

STANDARD DEPARTURE CHART -INSTRUMENT

RJAA / NARITA INTL

RNAV TRANSITION

AGRIS TRANSITION

From TETRA at or above 12000FT, to RADIX at or above FL150, to WHARF at or above FL180, to AGRIS at or above FL200.

Serial Number	Path Descriptor	Waypoint Identifier	Fly Over	Course °M(°T)	Magnetic Variation	Distance (NM)	Turn Direction	Altitude (FT)	Speed (KIAS)	Vertical Angle	Navigation Specification
001	IF	TETRA	-	-	-7.5	-	-	+12000	-	-	RNAV1
002	TF	RADIX	-	346 (338.1)	-7.5	13.9	-	+FL150	-	-	RNAV1
003	TF	WHARF	-	346 (338.1)	-7.5	8.7	-	+FL180	-	-	RNAV1
004	TF	AGRIS	-	346 (338.0)	-7.5	19.3	-	+FL200	-	-	RNAV1

KIMIN TRANSITION

From TETRA at or above 12000FT, to RADIX at or above FL150, to WHARF at or above FL180, to KIMIN.

Serial Number	Path Descriptor	Waypoint Identifier	Fly Over	Course °M(°T)	Magnetic Variation	Distance (NM)	Turn Direction	Altitude (FT)	Speed (KIAS)	Vertical Angle	Navigation Specification
001	IF	TETRA	-	-	-7.5	-	-	+12000	-	-	RNAV1
002	TF	RADIX	-	346 (338.1)	-7.5	13.9	-	+FL150	-	-	RNAV1
003	TF	WHARF	-	346 (338.1)	-7.5	8.7	-	+FL180	-	-	RNAV1
004	TF	KIMIN	-	012 (004.1)	-7.5	24.0	-	-	-	-	RNAV1

ENPAR TRANSITION

From TETRA at or above 12000FT, to RAMBA at or above FL160, to ENPAR.

Serial Number	Path Descriptor	Waypoint Identifier	Fly Over	Course °M(°T)	Magnetic Variation	Distance (NM)	Turn Direction	Altitude (FT)	Speed (KIAS)	Vertical Angle	Navigation Specification
001	IF	TETRA	-	-	-7.5	-	-	+12000	-	-	RNAV1
002	TF	RAMBA	-	293 (285.1)	-7.5	14.0	-	+FL160	-	-	RNAV1
003	TF	ENPAR	-	292 (284.9)	-7.5	7.9	-	-	-	-	RNAV1

Waypoint Coordinates

Waypoint Identifier	Coordinates	Waypoint Identifier	Coordinates
AGRIS	362514.7N / 1395633.1E	RAMBA	355003.7N / 1395917.7E
ENPAR	355205.2N / 1394954.3E	TETRA	354626.4N / 1401555.8E
KIMIN	363119.5N / 1400738.2E	WHARF	360722.6N / 1400531.1E
RADIX	355917.2N / 1400933.2E		

CHANGE : New PROC