

MIPS
INSTRUMENT APPROACH CHART

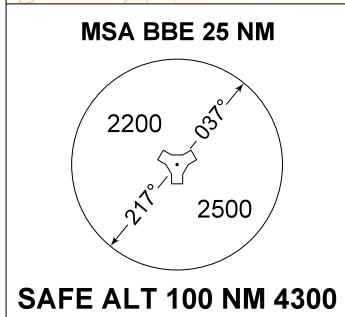
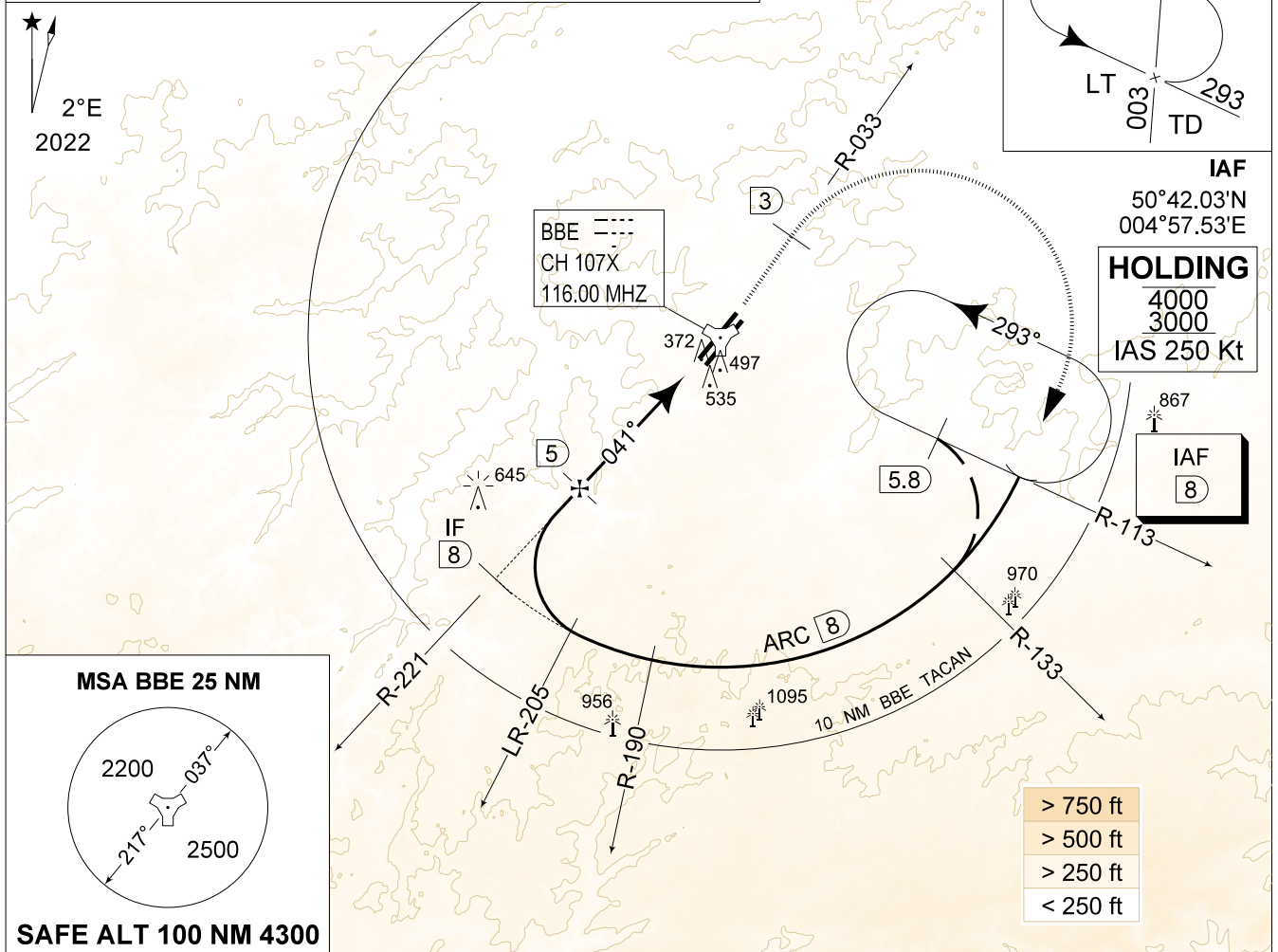
TACAN z RWY 04L
BEAUVECHAIN (EBBE)

AD ELEV 362

BELGA RADAR		BEAUVECHAIN APP		BEAUVECHAIN TWR		BEAUVECHAIN GND	
374.400	129.325	282.100	122.830	362.025	130.730	359.825	121.855
TACAN	APP COURSE	FAF ALT	DESCENT GR	MDA	THR	ALS	LDA
BBE CH107X	041°	1800 FT	5.24%(3°)	770	349 FT	930 M	7959 FT

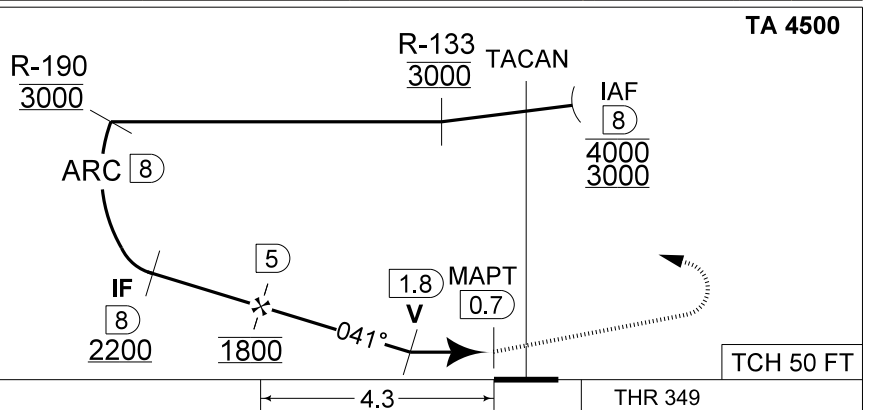
NOTE:

a) HOLDING AT 4000 FT UNDER RADAR CONTROL MANDATORY



DME BBE	5	4	3	2
Altitude	1790	1470	1150	830
Height	(1441)	(1121)	(801)	(481)

MISSED APPROACH
Climb to 1000 FT RWY track and intercept R-033. At 2 DME past TACAN climb to 3000 FT. Passing 1500 FT or 3 DME whichever comes the latest, turn right at MAX 250 KIAS (MAX 300 KIAS for HPMA) to intercept R-113 towards IAF.



CAT I

CATEGORY	A	B	C	D	HPMA
S-TAC 04L	770 - 1.3 421 (500 - 1.3 / 2.2)				

TACAN z RWY 04L

50°45.47' N
004°46.02' E

BEAUVECHAIN (EBBE)

CHANGE: Removal of PAR

BEL DEFENCE, AIR COMPONENT 08-AUG-2024 - THS