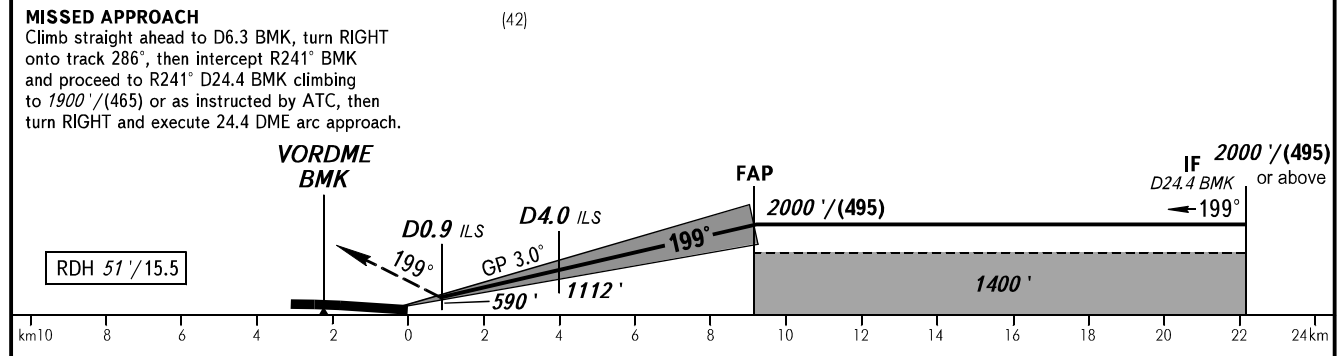
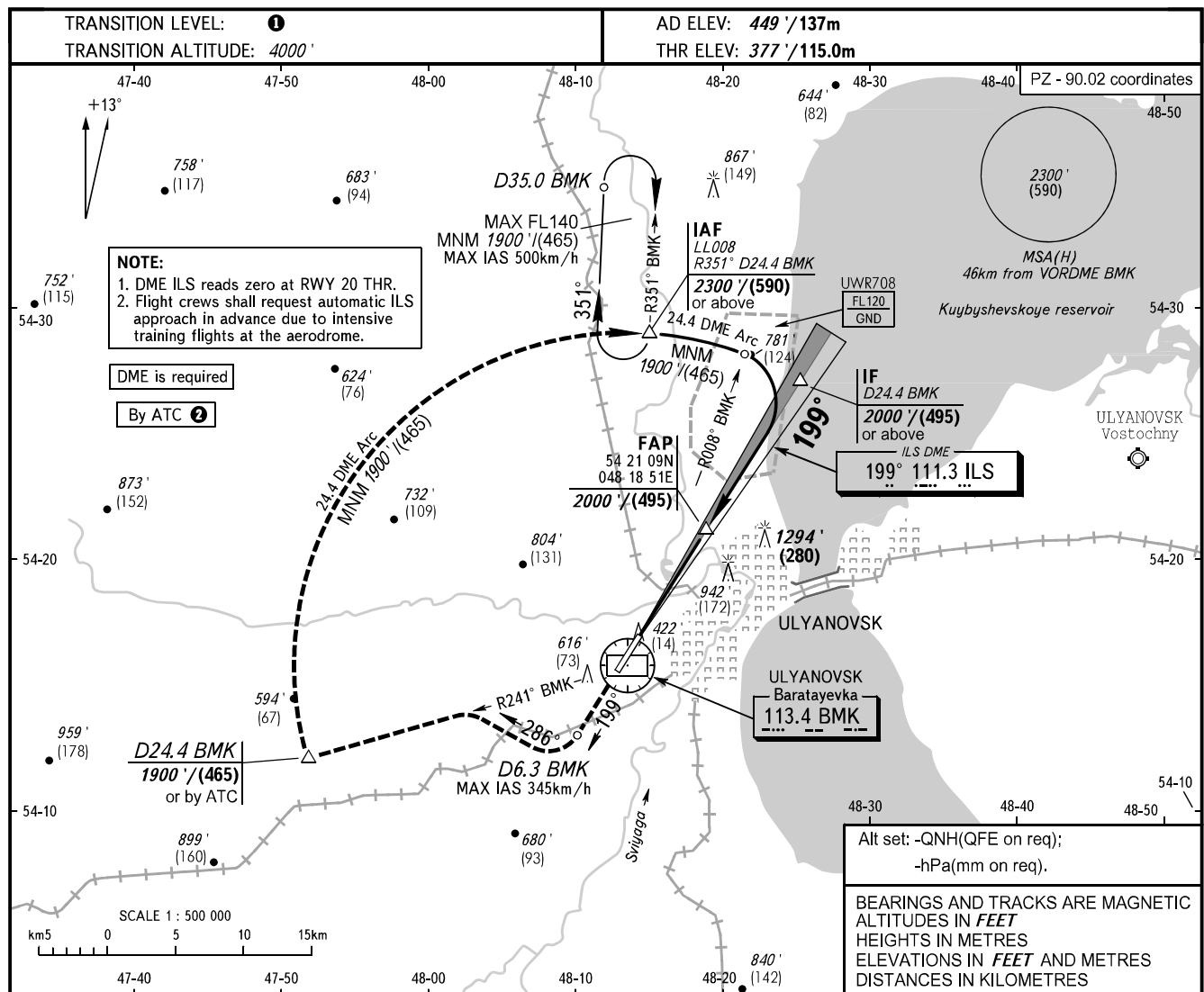


**INSTRUMENT
APPROACH
CHART - ICAO**

RADAR 120.800
PRECISION 120.400

**ULYANOVSK, RUSSIA
BARATAYEVKA
ILS X CAT I RWY 20**



OCA(H)		A	B	C	D						
Straight-in Approach	CAT I	552' (176')	564' (188')	572' (196')	583' (207')						
Circling		920' (470')	1010' (560')	1340' (890')	1340' (890')						
GROUND SPEED		km/h	150	180	210	240	270	300	330	360	390
RATE OF DESCENT		m/s	2.2	2.6	3.0	3.5	3.9	4.3	4.8	5.2	5.6
RATE OF DESCENT		ft/min	427	512	597	682	768	853	938	1024	1109

① TRANSITION LEVEL:
- FL050 when QNH is 1013 hPa (760mm mercury column) or above;
- FL060 when QNH is 977 hPa (733mm mercury column) or above, but less than 1013 hPa (760mm mercury column);
- FL070 when QNH is less than 977 hPa (733mm mercury column).

② When restricted area UWR708 is active.

③ Visual manoeuvring east of the AD is PROHIBITED.

CHANGE: Heading, HGT