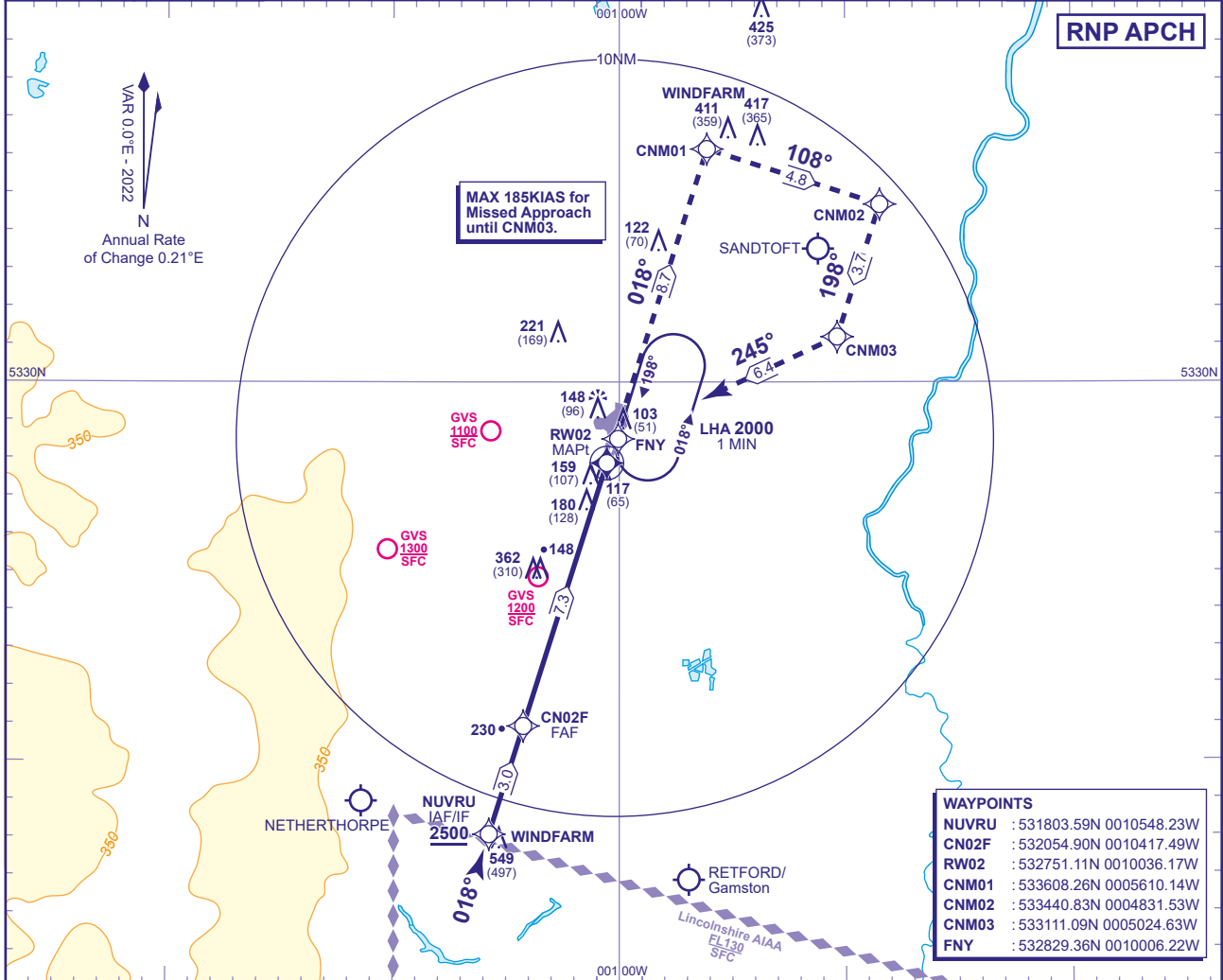


INSTRUMENT APPROACH CHART - ICAO

RNP APCH SHEFFIELD
RNP RWY 02
 (ACFT CAT A,B,C,D)

<div style="display: flex; justify-content: space-around;"> <div style="border: 1px solid black; border-radius: 50%; width: 40px; height: 40px; display: flex; align-items: center; justify-content: center;">32</div> <div style="border: 1px solid black; border-radius: 50%; width: 40px; height: 40px; display: flex; align-items: center; justify-content: center;">22</div> </div> <p>MSA 25NM ARP MSA 15NM ARP</p>	APP 126.225	DONCASTER APPROACH	AD ELEVATION 55
	TWR 128.775	DONCASTER TOWER	THR ELEVATION 52
	RAD 126.225, 129.055	DONCASTER RADAR	OBSTACLE ELEVATION
	ATIS 134.955	DONCASTER INFORMATION	549 AMSL (497) (ABOVE THR)
			MIN TEMP -10°C
			TRANSITION ALTITUDE 5000



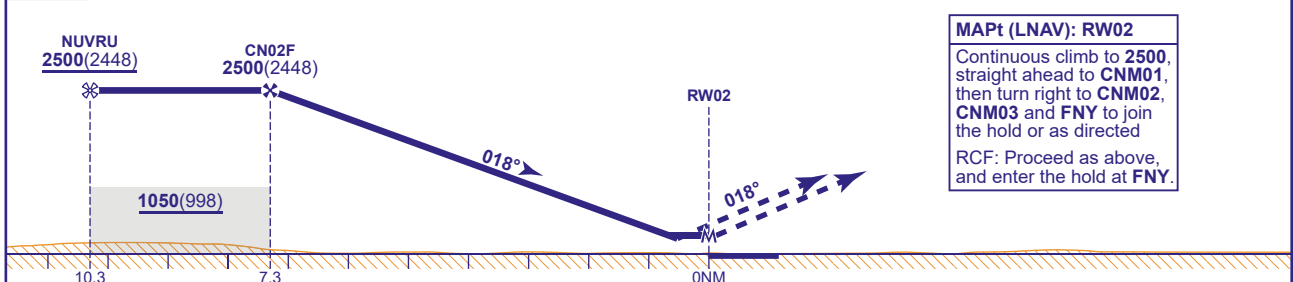
WAYPOINTS

- NUVRU : 531803.59N 0010548.23W
- CN02F : 532054.90N 0010417.49W
- RW02 : 532751.11N 0010036.17W
- CNM01 : 533608.26N 0005610.14W
- CNM02 : 533440.83N 0004831.53W
- CNM03 : 533111.09N 0005024.63W
- FNY : 532829.36N 0010006.22W

RECOMMENDED PROFILE VNAV - VERTICAL PATH ANGLE 3.1° (LNAV 5.42%), 329FT /NM

	7	6	5	4	3	2	1
ALT(HGT)	2410(2358)	2080(2028)	1750(1698)	1420(1368)	1090(1038)	760(708)	430(378)

TCH 53



Aircraft Category		A	B	C	D	Rate of descent	G/S KT	160	140	120	100	80
		LNAV/VNAV	310(258)	310(258)	320(268)		320(268)	FT/MIN	870	770	660	550
OCA (OCH)	LNAV	480(428)	480(428)	480(428)	480(428)							
	Total Area	490(435)	550(495)	760(705)	760(705)							

NOTE Aircraft will be radar vectored to NUVRU.

CHANGE (12/21): EGNOS AND LPV REMOVED. CAT A VM(C) OCA (OCH AAL).