

CLOUD-FOUR BRAVO (RNAV) DEPARTURE (CLOUB4•CLOUD)

ALAMOGORDO, NEW MEXICO

ATIS ★ 273.5  
CLNC DEL  
126.7 289.4  
GND CON  
127.05 275.8  
TOWER ★  
119.3 254.4  
DEP CON  
128.1 284.0  
ALBUQUERQUE CENTER  
132.65 257.6

AL-7 [USAF]

Rwy	Knots	60	120	180	240	300	360
16	V/V(fpm)	490	980	1470	1960	2450	2940
22/25	V/V(fpm)	500	1000	1500	2000	2500	3000

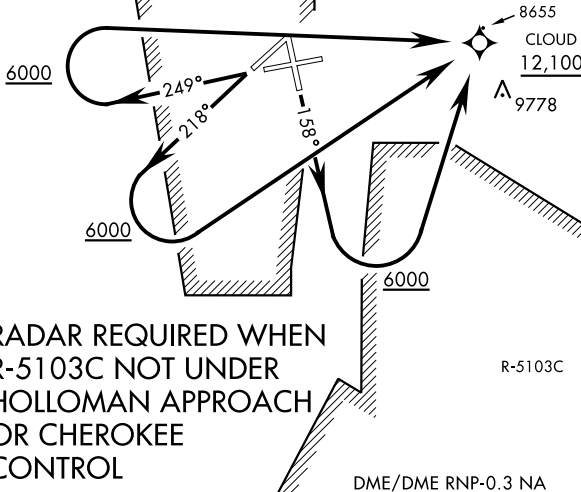
Minimum climb to 12,100

BEAK B MOA

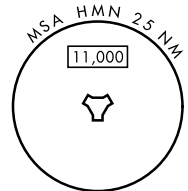
BEAK C MOA

SW-1, 20 MAR 2025 to 17 APR 2025

SW-1, 20 MAR 2025 to 17 APR 2025



**RADAR REQUIRED WHEN  
R-5103C NOT UNDER  
HOLLOMAN APPROACH  
OR CHEROKEE  
CONTROL**



**▼ DEPARTURE ROUTE DESCRIPTION**

TAKEOFF RWY 16: Climb on track 158°. When leaving 6000 turn left direct CLOUD then via assigned routing. Cross CLOUD at or above 12,100.

TAKEOFF RWY 22: Climb on track 218°. When leaving 6000 turn left direct CLOUD then via assigned routing. Cross CLOUD at or above 12,100.

TAKEOFF RWY 25: Climb on track 249°. When leaving 6000 turn right direct CLOUD then via assigned routing. Cross CLOUD at or above 12,100.