

VOR/DME RWY 13

VOR/DME PWA 113.4 Chan 81	APCH CRS 110°	Rwy Idg 10,000 TDZE 1241 Arprt Elev 1291
---	-------------------------	---

[USAF]

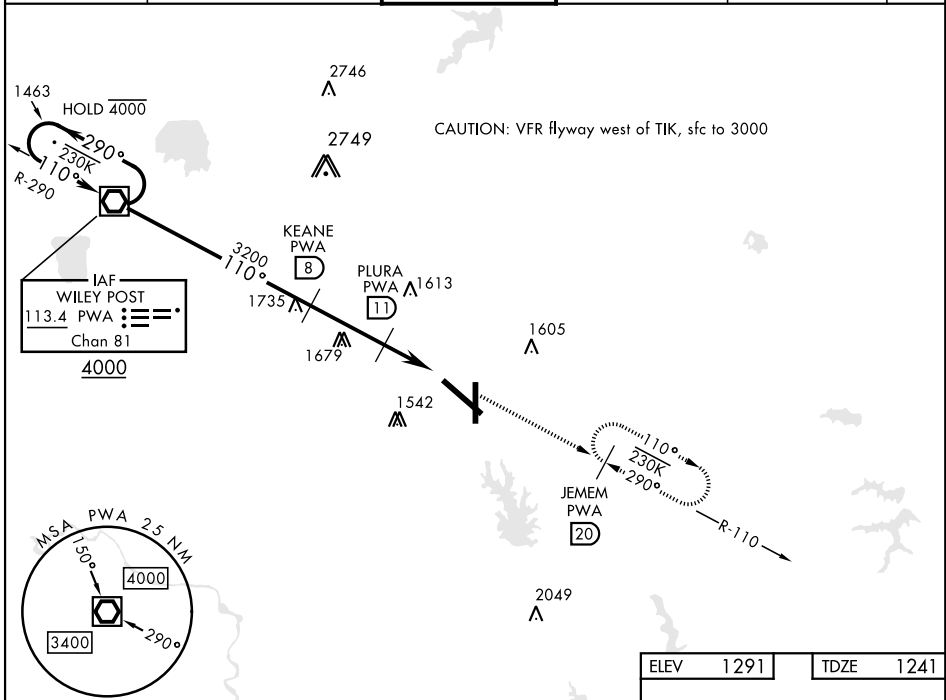
TINKER AFB (KTIK)

▼ * When ALS inop, increase CAT AB RVR to 50 and vis to 1 mile, CAT C vis to 1 1/4 miles, CAT D vis to 2 miles, CAT E vis to 2 1/4 miles.
 ** CAT E Circling not authorized in sector S of Rwy 13-31 and W of Rwy 18-36.

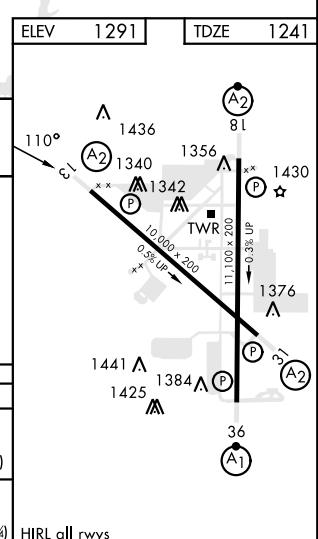
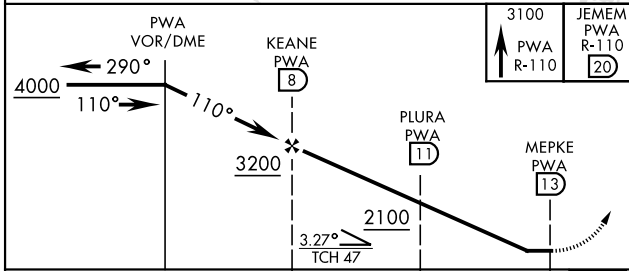


MISSED APPROACH: Climb to 3100 direct to PWA R-110/20 DME (JEMEM) and hold.

ATIS * 270.1	OKE CITY APP CON 124.2 336.4	TOWER 124.45 251.05	GND CON 121.8 275.8	CLNC DEL 119.7 335.8	ASR
------------------------	--	-------------------------------	-------------------------------	--------------------------------	-----



EMERG SAFE ALT 100 NM 4700



CATEGORY	A	B	C	D	E
S-13 *	1900/40 659 (700-34)		1900-1 1/2 659 (700-1 1/2)	1900-1 3/4 659 (700-1 3/4)	1900-2 659 (700-2)
CIRCLING **	1900-1 609 (700-1)		1900-1 3/4 609 (700-1 3/4)	1980-2 1/4 689 (700-2 1/4)	2040-2 3/4 749 (800-2 3/4)

HIRL all rwys

VOR/DME RWY 13

SC-1, 20 MAR 2025 to 17 APR 2025

SC-1, 20 MAR 2025 to 17 APR 2025