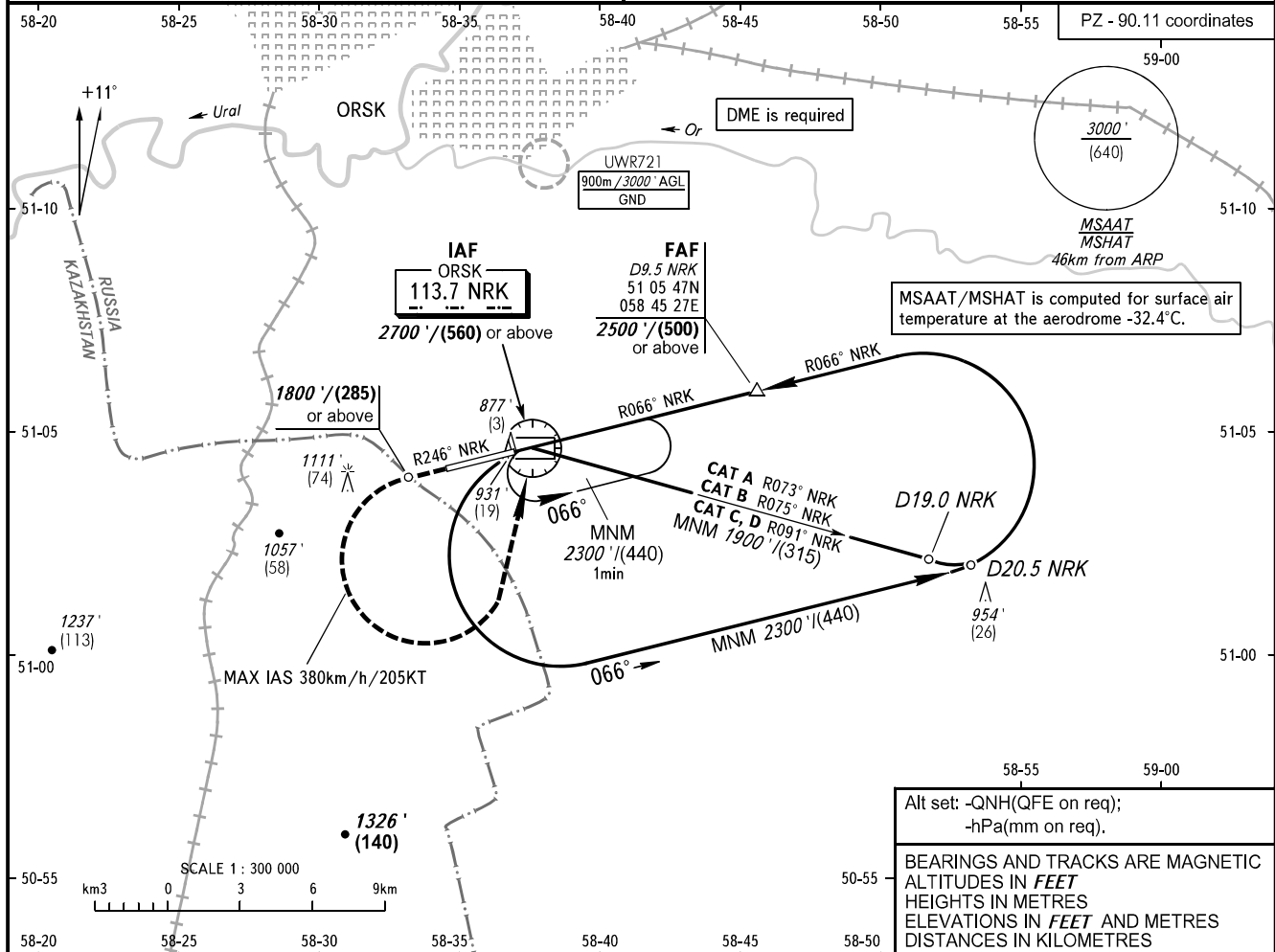


**INSTRUMENT
APPROACH
CHART - ICAO**

ORSK, RUSSIA
ORSK
VOR RWY 25

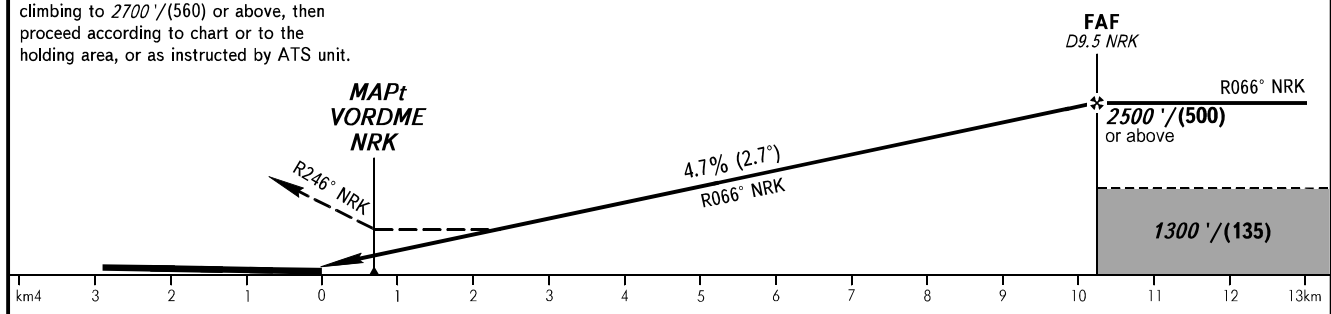
TOWER **122.700**

TRANSITION LEVEL: **01** TRANSITION ALT: **3000'** AD ELEV: **909' / 277m**
TRANSITION HGT: **(640)** THR ELEV: **868' / 264.5m**



MISSED APPROACH
Climb on R246° NRK to 1800'/(285) or above, turn LEFT to VORDME NRK climbing to 2700'/(560) or above, then proceed according to chart or to the holding area, or as instructed by ATS unit.

DME NRK	2.0	4.0	6.0	8.0
ALTITUDE/HEIGHT	1350'/(135)	1650'/(225)	1960'/(320)	2270'/(415)



OCA(H)	A	B	C	D
Straight-in	1130' (260') (80)	1130' (260') (80)	1130' (260') (80)	1130' (260') (80)
Approach				
Circling	1310' (400') (125)	1410' (500') (155)	1630' (720') (220)	1660' (750') (230)

1 TRANSITION LEVEL:
- FL040 when QNH is 1013 hPa (760mm mercury column) or above;
- FL050 when QNH is 977 hPa (733mm mercury column) or above, but less than 1013 hPa (760mm mercury column);
- FL060 when QNH is less than 977 hPa (733mm mercury column).

NOTE:
1. MAPt at VORDME NRK. Timing not authorized for defining MAPt.
2. Turn before passing MAPt is PROHIBITED.

GROUND SPEED	km/h	150	180	210	240	270	300	330	360	390	420	450
RATE OF DESCENT	m/s	2.0	2.4	2.7	3.1	3.5	3.9	4.3	4.7	5.1	5.5	5.9
	ft/min	385	463	540	617	694	771	848	925	1002	1079	1156