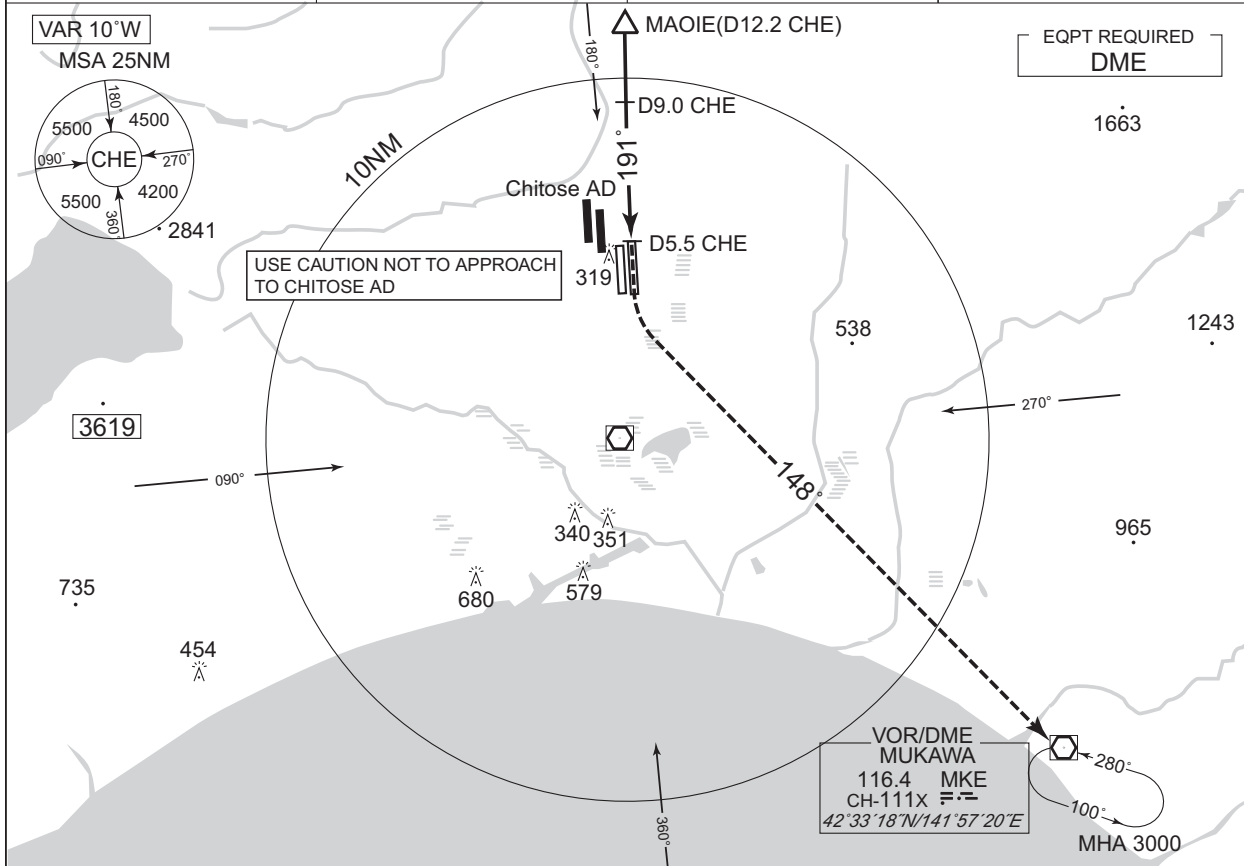


INSTRUMENT APPROACH CHART

RJCC / NEW CHITOSE

VOR Z RWY19L

| | | | |
|------------------------------|---|---|--------------------------|
| CHITOSE APP 120.1 – 124.7 | CHITOSE VOR/DME 116.9 CHE CH-116X 42°42'00"N/141°41'10"E | CHITOSE TOWER 118.8 – 126.2 – 121.6G | RADAR AVBL ATIS 128.6 |
|------------------------------|---|---|--------------------------|



MISSED APPROACH
Turn left, climb via MKE
R328 to 5000FT, proceed to MKE VOR/DME and hold.
Contact CHITOSE APP.

MAPt D5.5 CHE VDP D6.8 CHE MAOIE D12.2 CHE

900 191° 2000

0.2NM

| | | | | |
|--------|-----------|--------------|-------------|-----------|
| MINIMA | | THR elev. 77 | AD elev. 70 | |
| CAT | | | CIRCLING | |
| | MDA(H) | RVR/CMV | MDA(H) | VIS |
| A | 620 (550) | 1400 | 620 (550) | 1600 |
| B | | 1500 | | |
| C | | 1600 | | 2400 |
| D | | 1800 | | 640 (570) |

Change : Description of VAR.
Circling to EAST side of RWY only.