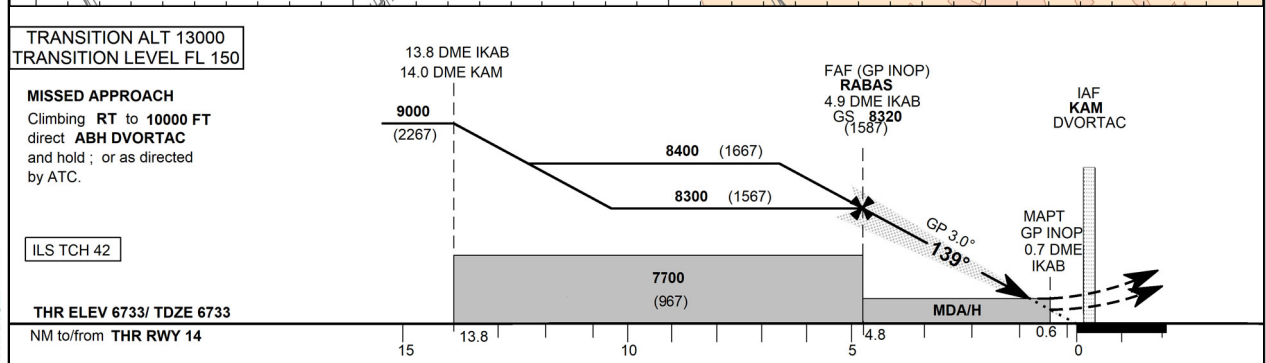
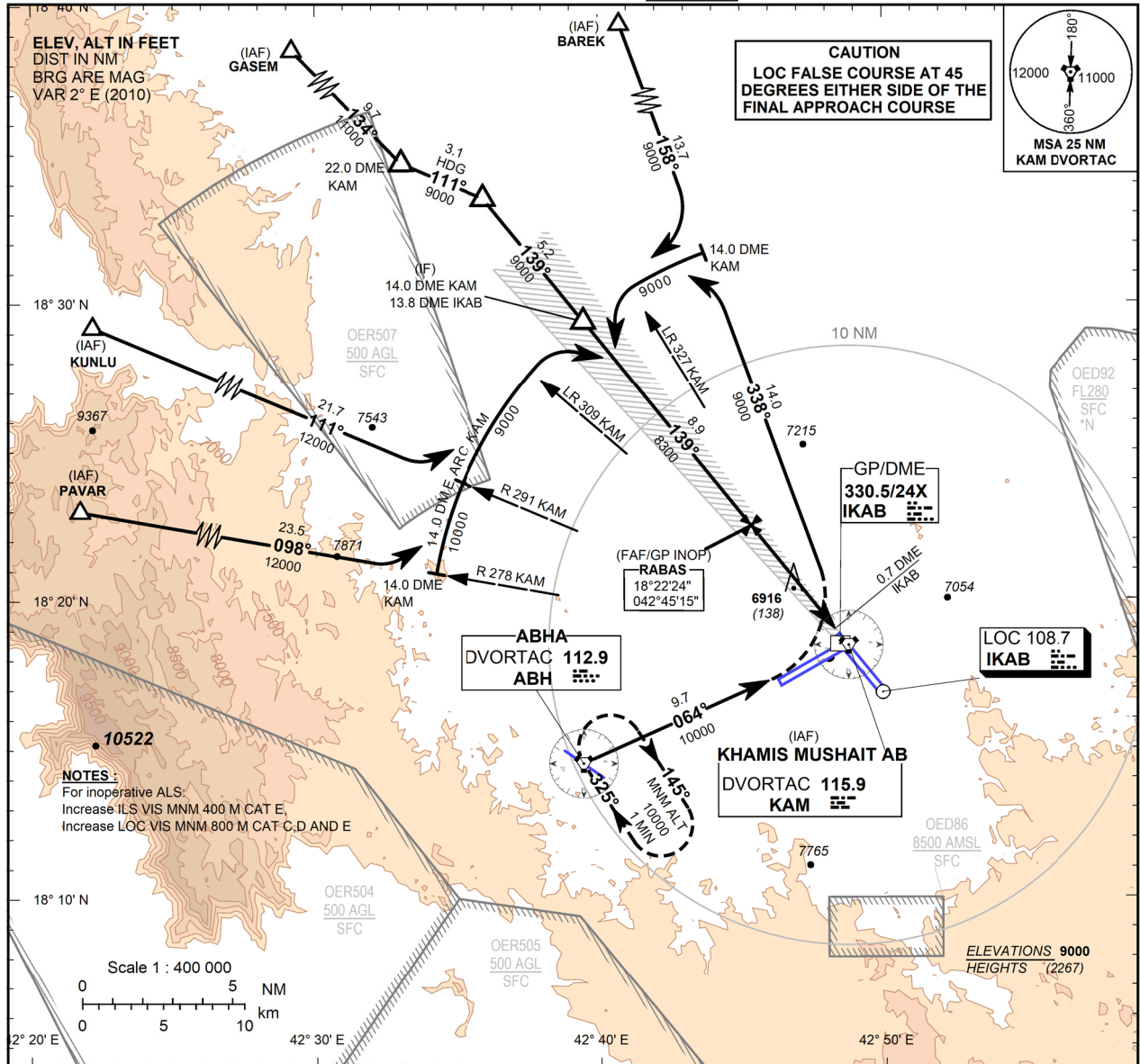


**INSTRUMENT
APPROACH
CHART - ICAO**

**AERODROME ELEV 6778 FT
HEIGHTS RELATED TO
TDZ RWY 14 - ELEV 6733 FT**

APP 124.5
TWR 119.3
SMC 127.7
ATIS 376.6

**KHAMIS MUSHAIT /
King Khaled Air Base (OEKM)
ILS/DME RWY 14**



CHANGE: Minor

AMDT-1, 19 NOV 09

Straight-in Approach	CAT I	ACFT CAT	A/B	C	D	E	GND SPEED	Knots	70	90	110	120	130	150	170	190		
		DA(H)	-						6933 (200)	min:s	3:36	2:48	2:17	2:06	1:56	1:41	1:29	1:20
GP INOP		RVR/VIS (m)	-					800	Rate of Descent	ft/min	371	478	584	637	690	796	902	1008
		MDA(H)	7180 (447)															
Circling		VIS(m)	-					1200			1600							
		MDA(H)	-					7560 (782)			7660 (882)							
		VIS(m)	-					3600			4000							
CIRCLING SOUTH OF AIRPORT NOT AUTHORIZED CAT D & AIRCRAFT.								DME IKAB NM		4	3	2						
								ALT (HGT) 3.0° APCH		8058 (1325)	7740 (1007)	7422 (689)						