

WICHITA FALLS, TEXAS

# RNAV (GPS) RWY 15C

APCH CRS <b>153°</b>	Rwy ldg <b>10,003</b> TDZE <b>1003</b> Arprt Elev <b>1019</b>
-------------------------	---

[USAF]

SHEPPARD AFB/WICHITA FALLS MUNI (KSPS)

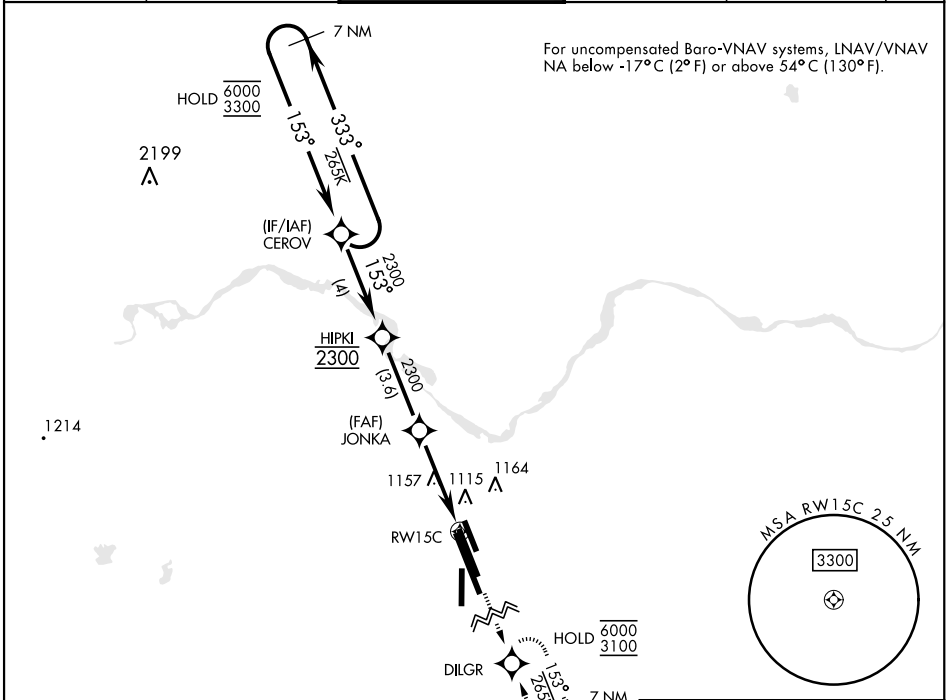
RNP APCH - GPS



MISSED APPROACH: Climb to 3100 direct DILGR and hold.

- ▼ \* When ALS inop, increase vis to 7/8 mile.
- \*\* When ALS inop, increase CAT AB vis to 1 mile; CAT CDE vis to 1 1/8 miles.
- \*\*\* Circling not authorized southwest of Rwy 15R-33L.

ATIS ★	APP CON	TOWER ★	GND CON	CLNC DEL	ASR
<b>132.05 269.9</b>	<b>118.2 269.025</b>	<b>119.75 0 279.525 (CTAF)</b>	<b>125.5 289.4</b>	<b>121.2 282.225</b>	

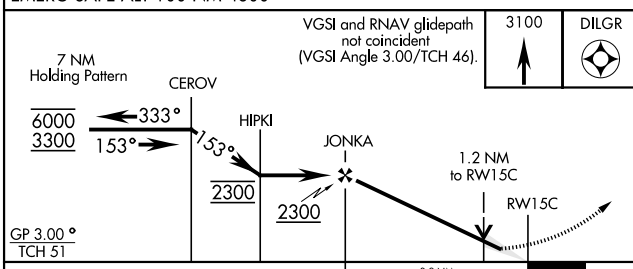


For uncompensated Baro-VNAV systems, LNAV/VNAV NA below -17°C (2° F) or above 54°C (130° F).

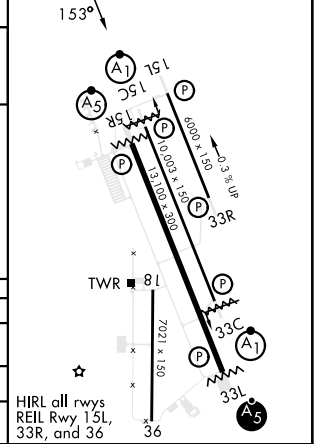
SC-2, 20 MAR 2025 to 17 APR 2025

SC-2, 20 MAR 2025 to 17 APR 2025

EMERG SAFE ALT 100 NM 4600



ELEV	1019	TDZE	1003
------	------	------	------



CATEGORY	A	B	C	D	E
LNAV/VNAV DA*	1266-1/2 263 (300-1/2)	1277-1/2 274 (300-1/2)	1285-1/2 282 (300-1/2)	1296-1/2 293	300-1/2
LNAV MDA**	1420-1/2	417 (500-1/2)	1420-3/4	417	(500-3/4)
CIRCLING***	1420-1 401 (500-1)	1480-1 461 (500-1)	1480-1 1/2 461 (500-1 1/2)	2100-3	1081 (1100-3)

WICHITA FALLS, TEXAS

33°59'N-98°30'W

SHEPPARD AFB/WICHITA FALLS MUNI (KSPS)

Amtd 2 23JAN25

# RNAV (GPS) RWY 15C

HIREL all rwy's  
REIL Rwy 15L,  
33R, and 36