

STANDARD ARRIVAL CHART-INSTRUMENT

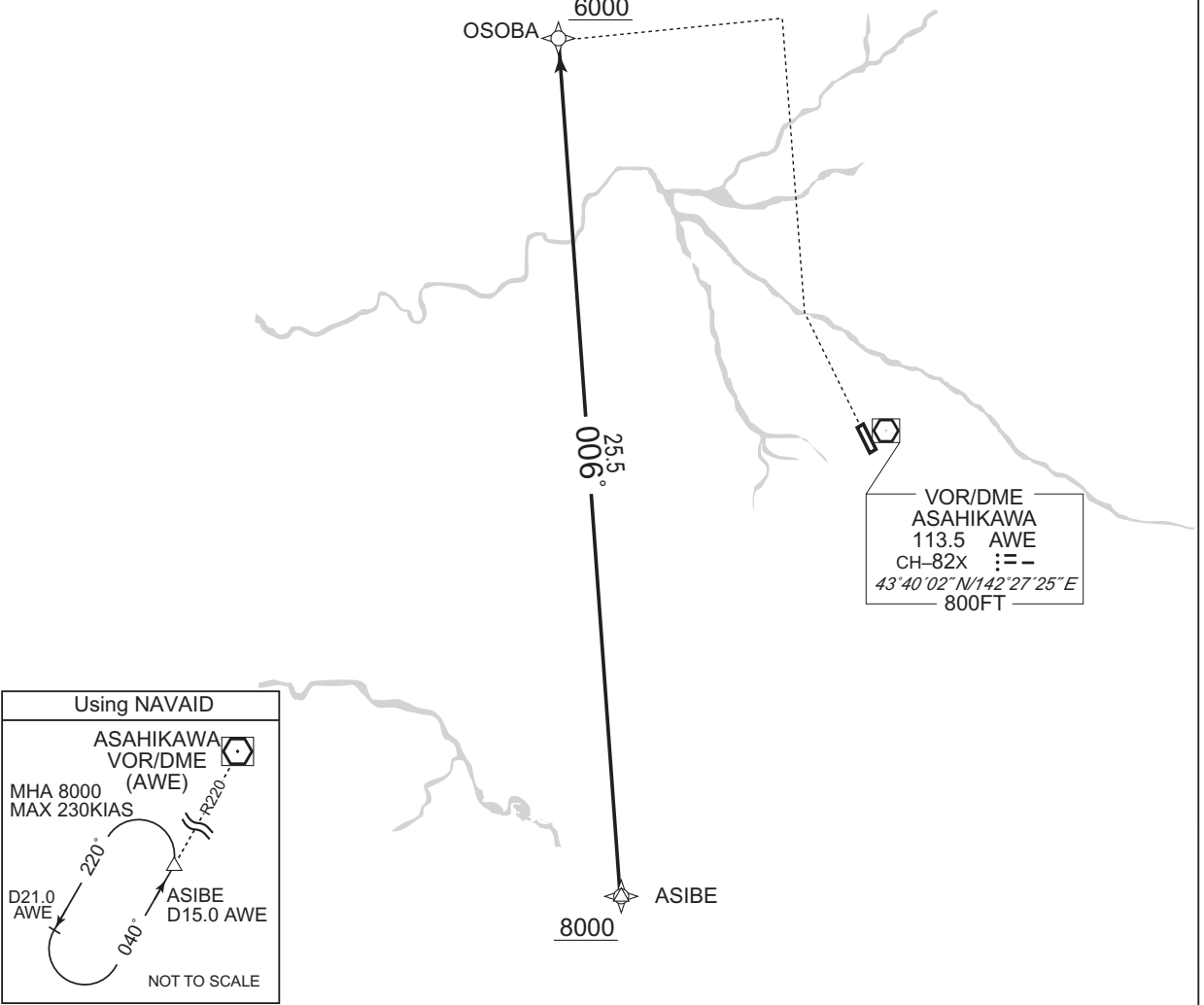
RJEC / ASAHIKAWA RNAV STAR RWY16

OSOBA ARRIVAL

RNP1

Note GNSS required.

VAR 10° W



CHANGE : VAR. Waypoint Coordinates added.

From ASIBE at or above 8000FT, to OSOBA at or above 6000FT.

Serial Number	Path Descriptor	Waypoint Identifier	Fly Over	Course °M(°T)	Magnetic Variation	Distance (NM)	Turn Direction	Altitude (FT)	Speed (KIAS)	Vertical Angle	Navigation Specification
001	IF	ASIBE	-	-	-9.9	-	-	+8000	-	-	RNP1
002	TF	OSOBA	-	006 (356.1)	-9.9	25.5	-	+6000	-	-	RNP1

Waypoint Coordinates

Waypoint Identifier	Coordinates
ASIBE	432704.0N / 1421700.9E
OSOBA	435228.9N / 1421435.5E

INTENTIONALLY LEFT BLANK