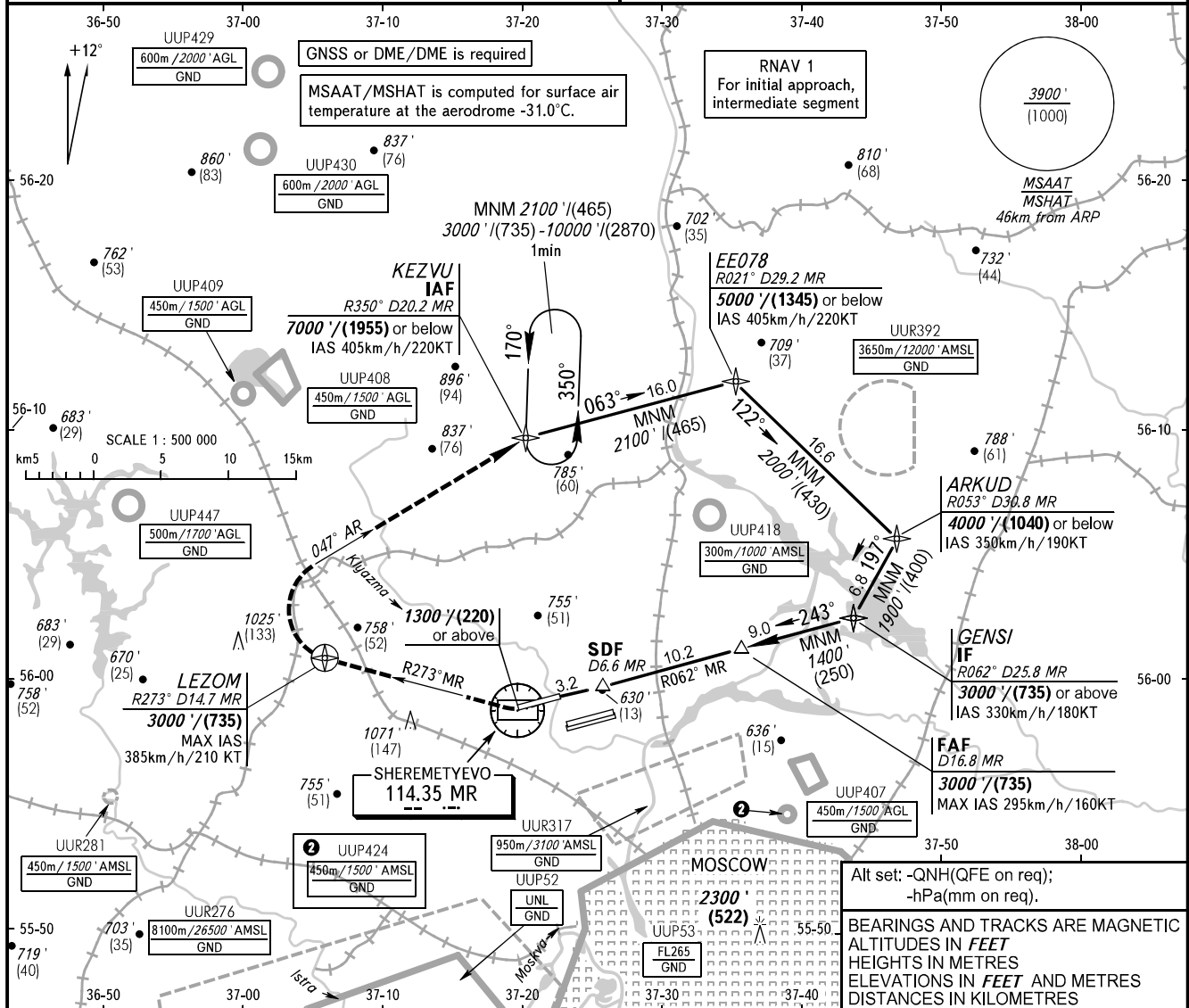


**INSTRUMENT
APPROACH
CHART - ICAO**

SHEREMETYEVO RADAR 118.100 120.675 122.700 126.600 135.175
SHEREMETYEVO TOWER 118.700 120.700 131.500

**MOSCOW, RUSSIA
SHEREMETYEVO
DVOR RWY 24R**

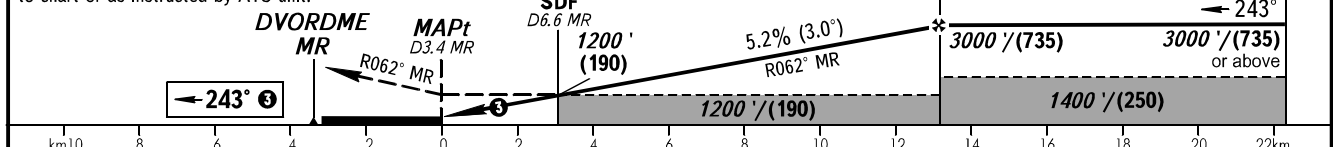
TRANSITION LEVEL: By ATC ① TRANSITION ALT: 10000' AD ELEV: 630' / 192m
TRANSITION HGT: (2870) THR ELEV: 589' / 179.5m



DME MR	4.0	6.0	8.0	10.0	12.0	14.0	16.0
ALTITUDE/HEIGHT	750' / (50)	1090' / (155)	1430' / (260)	1780' / (365)	2110' / (465)	2450' / (570)	2800' / (675)

MISSED APPROACH
Climb straight ahead to 1300' / (220) or above to DVORDME MR, turn RIGHT onto R273° MR to LEZOM climbing to 3000' / (735), turn RIGHT onto QDR 047° AR to KEZVU, then proceed according to chart or as instructed by ATS unit.

Final approach track is offset by 1° from RCL.



OCA(H)		A	B	C	D	① TRANSITION LEVEL:							
Straight-in	With SDF	1080' (490') (150)	1080' (490') (150)	1080' (490') (150)	1080' (490') (150)	- FL110 when QNH is 1013 hPa (760mm mercury column) or above;							
	Approach	1150' (560') (170)	1150' (560') (170)	1150' (560') (170)	1150' (560') (170)	- FL120 when QNH is 977 hPa (733mm mercury column) or above, but less than 1013 hPa (760mm mercury column);							
		- FL130 when QNH is less than 977 hPa (733mm mercury column).											
GROUND SPEED		km/h	150	180	210	240	270	300	330	360	390	420	450
RATE OF DESCENT		m/s	2.2	2.6	3.1	3.5	3.9	4.3	4.8	5.2	5.6	6.1	6.5
		ft/min	427	512	597	683	768	853	939	1024	1109	1195	1280