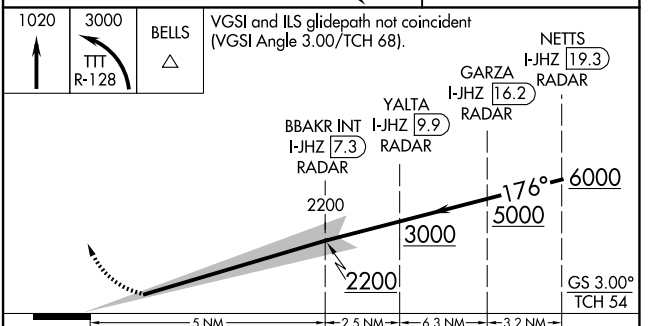
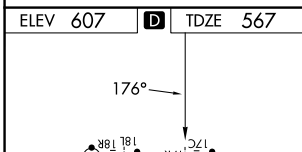
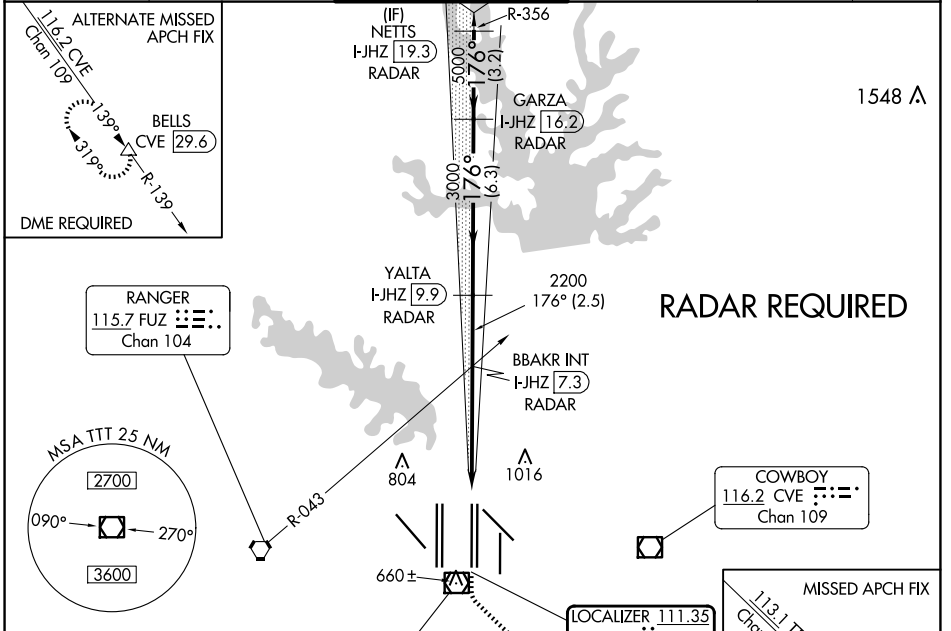


LOC/DME I-JHZ 111.35 Chan 50 (Y)	APP CRS 176°	Rwy ldg 13400 TDZE 567 Apt Elev 607
-----------------------------------------------	------------------------	----------------------------------------------------------------

CONVERGING ILS RWY 17R

DALLAS-FORT WORTH INTL (DFW)

<p>▼ DME or RADAR required. Simultaneous approach authorized with Converging ILS Rwy 13R.</p>	<p>MALSR</p>	<p>MISSED APPROACH: Climb to 1020 then climbing left turn to 3000 on TTT VOR/DME R-128 to BELLS INT/TTT 33.2 DME and hold.</p>			
<p>D-ATIS ARR 123.775 DEP 135.925</p>	<p>LONE STAR APP CON 127.075</p>	<p>DFW TOWER 126.55 127.5 EAST 124.15 134.9 WEST</p>	<p>GND CON 121.65 121.8 EAST 121.85 WEST</p>	<p>CLNC DEL 128.25</p>	<p>CPDLC</p>



CATEGORY	A	B	C	D
S-ILS 17R	767/18		200 (200-½)	

SC-2, 20 MAR 2025 to 17 APR 2025

SC-2, 20 MAR 2025 to 17 APR 2025