

EC-1, 20 MAR 2025 to 17 APR 2025

DEPARTURE ROUTE DESCRIPTION

TAKEOFF RUNWAY 15: Climb on heading 148° or as assigned by ATC, thence...  
TAKEOFF RUNWAY 33: Climb on heading 328° to 1800 then as assigned by ATC, thence....

....for RADAR vectors to JWELS, then on track 218° to SNDRS, then on (transition). Maintain ATC assigned altitude, expect filed altitude 10 minutes after departure.

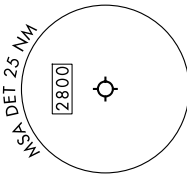
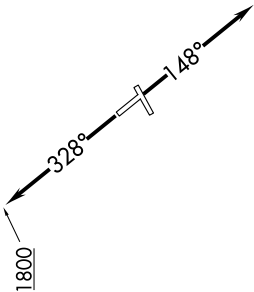
BGHR T TRANSITION (SNDRS3.BGHR T):  
TORR T TRANSITION (SNDRS3.TORR T):

TOP ALTITUDE:  
ASSIGNED BY ATC

RNAV-1 DME/DME/IRU or GPS.

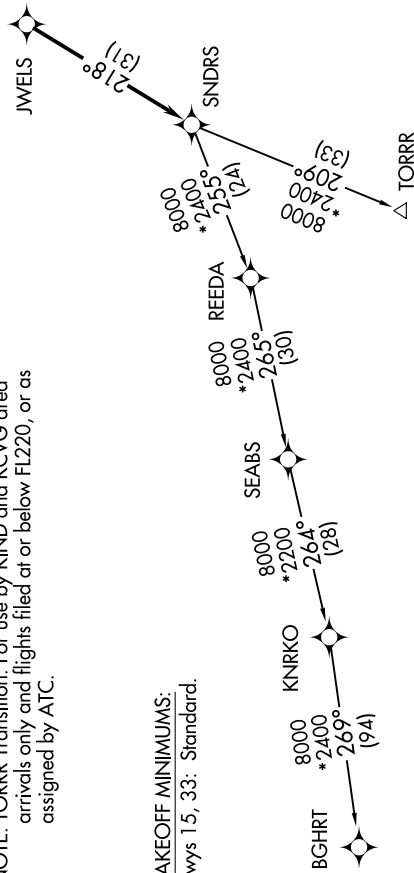
RADAR required.

DETROIT DEP CON  
134.3 284.0  
ATIS  
124.875  
GND CON  
121.85  
DETROIT CITY TOWER  
121.3 257.8



NOTE: Turbojet departures at/above 10000, maintain 280K until advised by ATC.  
NOTE: TORR Transition: For use by KIND and KCVG area arrivals only and flights filed at or below FL220, or as assigned by ATC.

TAKEOFF MINIMUMS:  
Rwys 15, 33: Standard.



NOTE: Chart not to scale.

EC-1, 20 MAR 2025 to 17 APR 2025