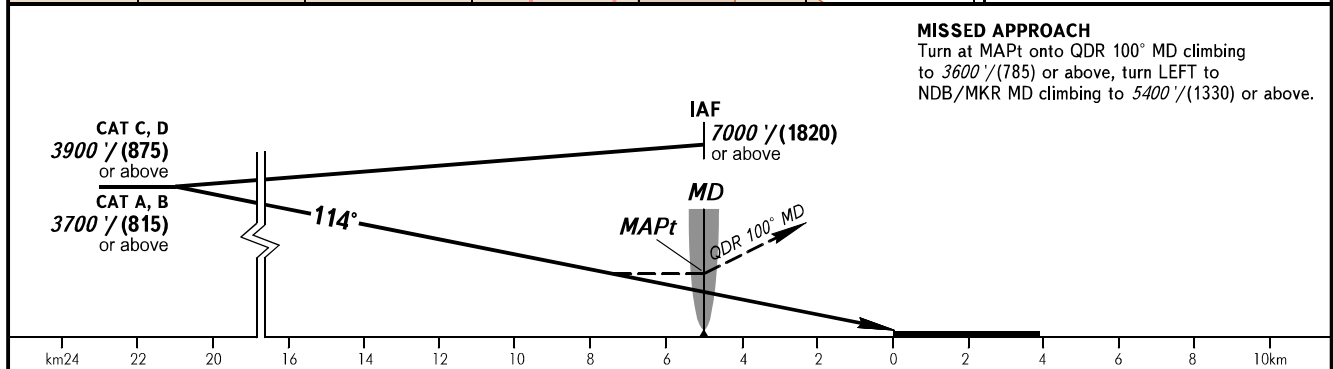
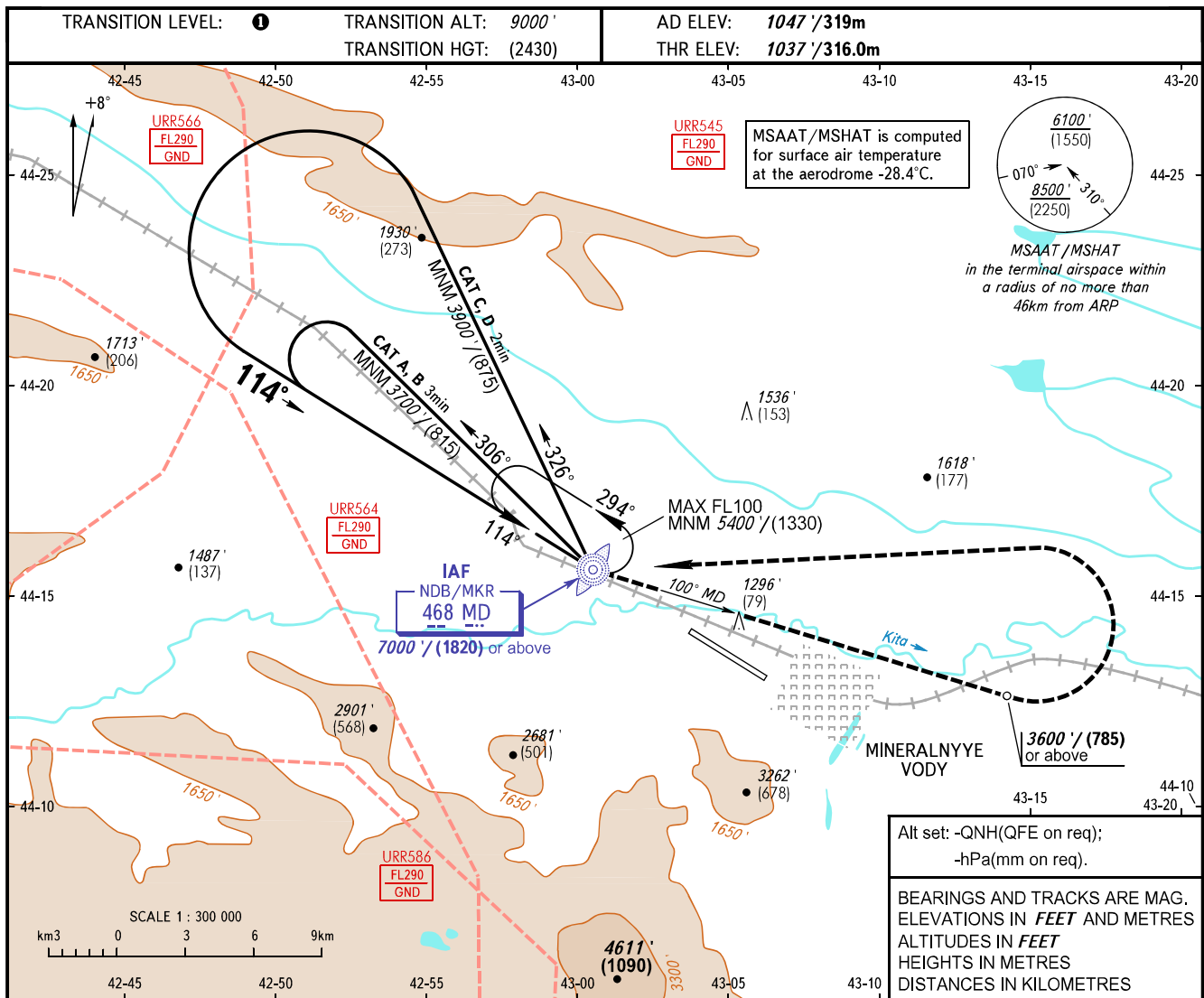


INSTRUMENT  
APPROACH  
CHART - ICAO

RADAR	120.700
START	128.000

MINERALNYYE VODY, RUSSIA  
MINERALNYYE VODY  
NDB B RWY 11



OCA(H)	A	B	C	D
Straight-in Approach				
Circling	2210' (1170') (360)	2210' (1170') (360)	2210' (1170') (360)	2320' (1280') (395)

**1** TRANSITION LEVEL:  
 - FL100 when QNH is 1013 hPa (760mm mercury column) or above;  
 - FL110 when QNH is 977 hPa (733mm mercury column) or above, but less than 1013 hPa (760mm mercury column);  
 - FL120 when QNH is less than 977 hPa (733mm mercury column).  
 Visual manoeuvring south of the AD is PROHIBITED.

**NOTE:**  
 1. Procedure is not AVBL, when URR545, URR564, URR566 are active.  
 2. Turn before MAPt is PROHIBITED.  
 3. MAPt at NDB/MKR MD.  
 Timing not authorized for defining MAPt.