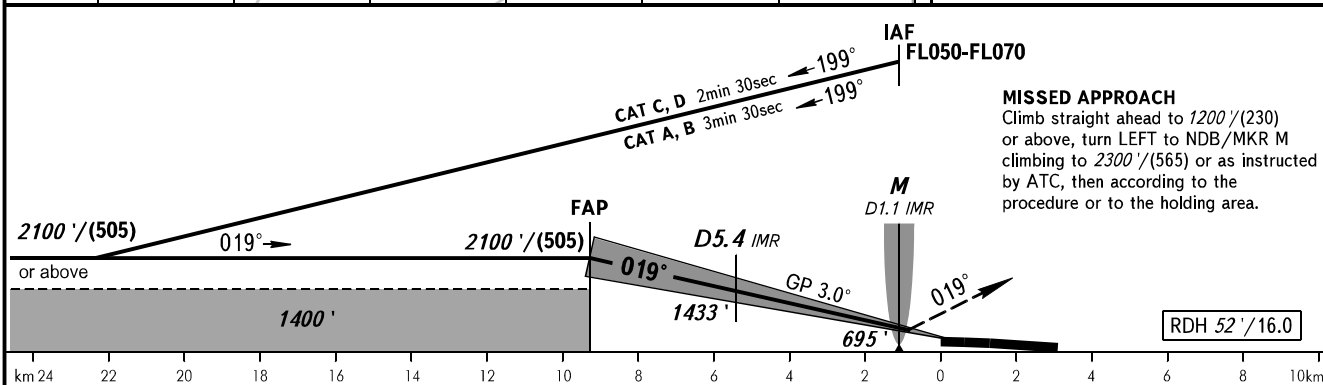
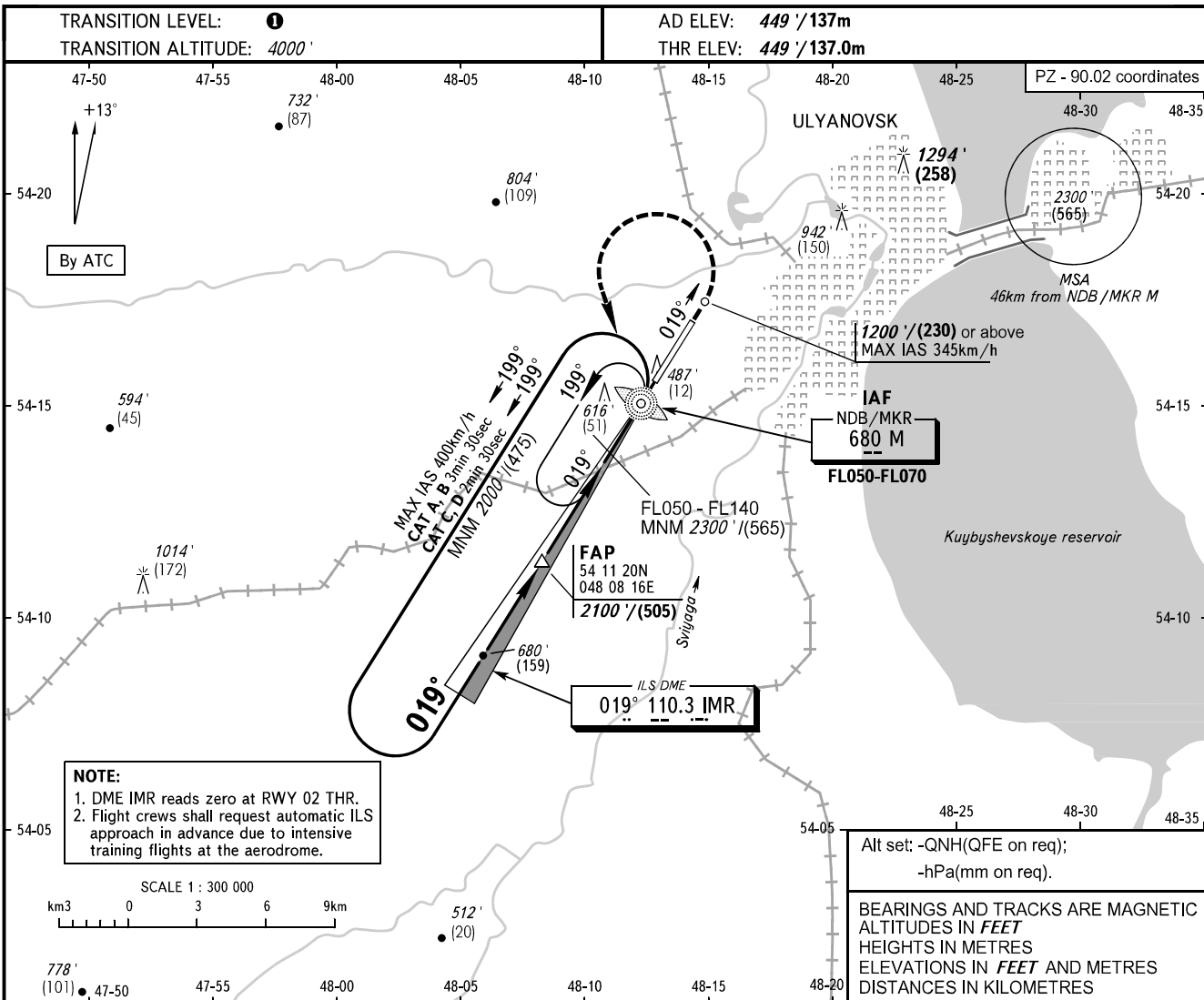


**INSTRUMENT
APPROACH
CHART - ICAO**

**ULYANOVSK, RUSSIA
BARATAYEVKA
ILS X CAT I RWY 02**

RADAR 120.800
PRECISION 120.400



OCA(H)		A	B	C	D						
Straight-in	CAT I	617' (168')	629' (180')	637' (188')	648' (199')						
	Approach										
Circling		920' (470')	1010' (560')	1340' (890')	1340' (890')						
GROUND SPEED	km/h	150	180	210	240	270	300	330	360	390	
RATE OF DESCENT	m/s		2.2	2.6	3.0	3.5	3.9	4.3	4.8	5.2	5.6
RATE OF DESCENT	ft/min		427	512	597	682	768	853	938	1024	1109

1 **TRANSITION LEVEL:**
- FL050 when QNH is 1013 hPa (760mm mercury column) or above;
- FL060 when QNH is 977 hPa (733mm mercury column) or above, but less than 1013 hPa (760mm mercury column);
- FL070 when QNH is less than 977 hPa (733mm mercury column).

2 Visual manoeuvring east of the AD is PROHIBITED.