

Isafjordur RNP D Instrument Approach Chart - ICAO

INSTRUMENT
APPROACH
CHART - ICAO

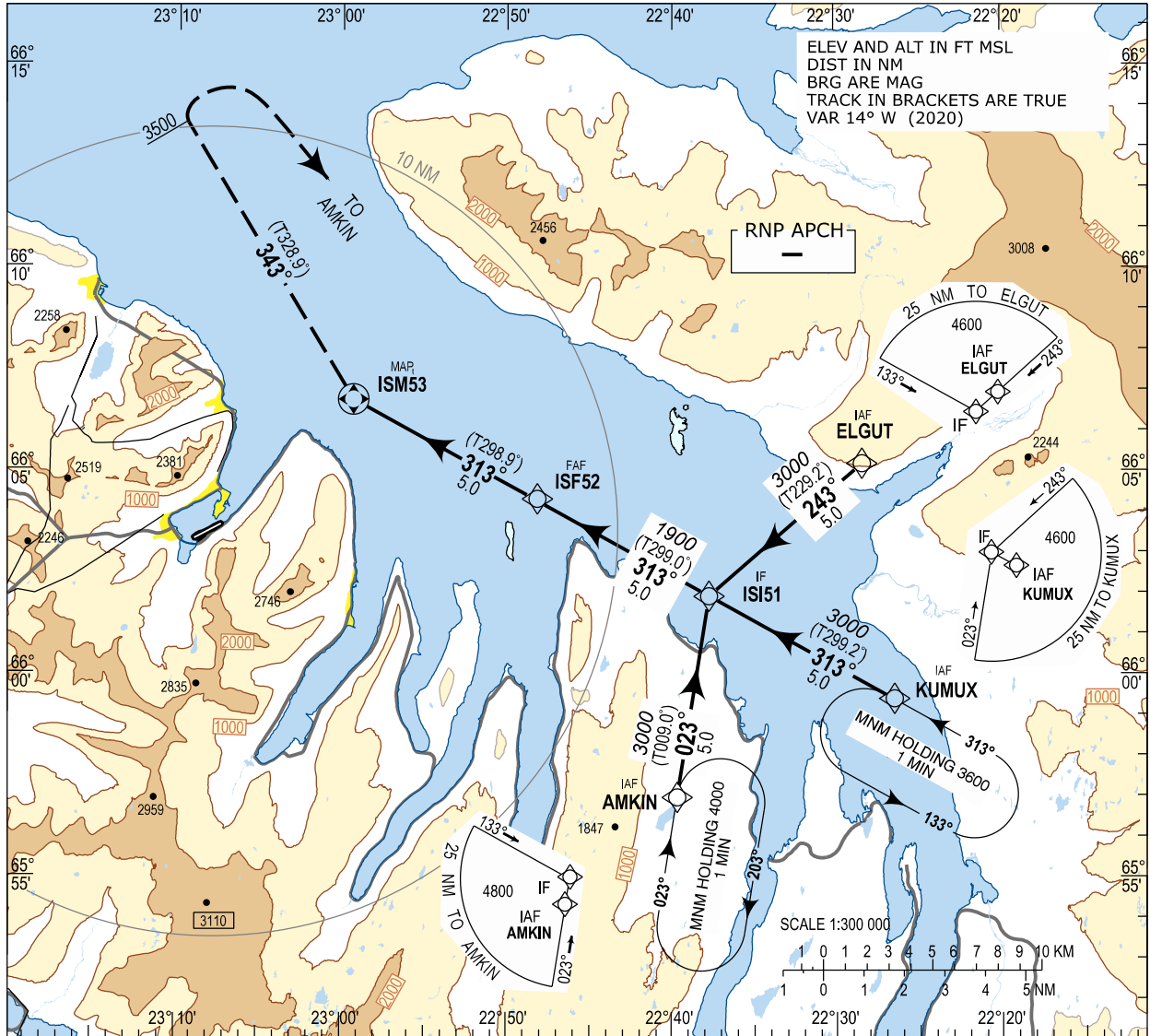
AERODROME ELEV 8

ISAFJORDUR AFIS	118.800
REYKJAVIK ACC	119.700

CLOUD BREAK
PROCEDURE

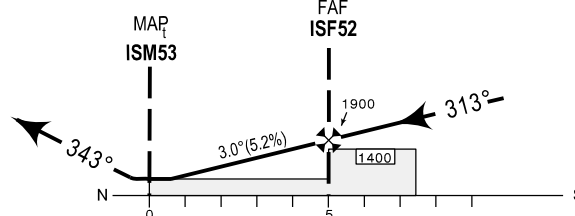
BIIS - ISAFJORDUR

RNP D



CHANGES: NEW PAGE NUMBER

MISSED APPROACH:
RIGHT CLIMBING TURN ON COURSE 343°
PASSING 3500 RIGHT TURN DIRECT TO
AMKIN AND HOLD AT 4000.
NO TURN BEFORE MAP.



TRANSITION ALT 7000

OCA (H)	A	B	REMARKS
LNAV CLOUD PENETRATION	500 (492)	500 (492)	PROCEED VFR FROM ISM53 TO ISAFJORDUR AIRPORT, 242°-4.9NM

DIST to ISM53	1	2	3	4	5
ALTITUDE	620	940	1260	1580	1900

Timing not authorized for defining MAP

GS	kt	75	100	150	180
ISF52 - ISM53 (5.0 NM)	MIN:SEC	4:00	3:00	2:00	1:40
Rate of descent 3.0° (5.2%)	ft/MIN	395	527	790	948

BIIS RNP D
Recommended Coding Table

Serial Number	Path Descriptor	Waypoint Identifier	Fly-over	Course / Track °M(°T)	Magnetic Variation	Distance	Turn Direction	Altitude (ft)	Speed (kt/h)	VPA/TCH	Navigation Specification
010	IF	AMKIN	-		+14.0			A4800+			RNP APCH
020	TF	ISI51	-	023 (009.0)	+14.0	5.0	L	A3000+			RNP APCH
010	IF	KUMUX	-		+14.0			A4600+			RNP APCH
020	TF	ISI51	-	313 (299.2)	+14.0	5.0		A3000+			RNP APCH
010	IF	ELGUT	-		+14.0			A4600+			RNP APCH
020	TF	ISI51	-	243 (229.2)	+14.0	5.0	R	A3000+			RNP APCH
030	TF	ISF52	-	313 (299.0)	+14.0	5.0		A1900+			RNP APCH
040	TF	ISM53	Y	313 (298.9)	+14.0	5.0					RNP APCH
050	CA		-	343 (328.9)	+14.0		R	A3500+			RNP APCH
060	DF	AMKIN	-		+14.0		R				RNP APCH
070	HM	AMKIN	Y	023 (009.0)	+14.0		R	A4000			RNP APCH

Waypoint coordinates

Waypoint Identifier	Coordinates		Display	
	LAT	LON	LAT	LON
AMKIN	655700.29N	0223938.40W	N 6557.00	W02238.64
KUMUX	655929.51N	0222658.86W	N 6559.49	W02226.98
ELGUT	660511.30N	0222827.34W	N 6605.19	W02228.46
ISI51	660155.54N	0223743.45W	N 6601.93	W02237.72
ISF52	660420.81N	0224830.09W	N 6604.35	W02248.50
ISM53	660645.35N	0225918.78W	N 6606.76	W02259.31