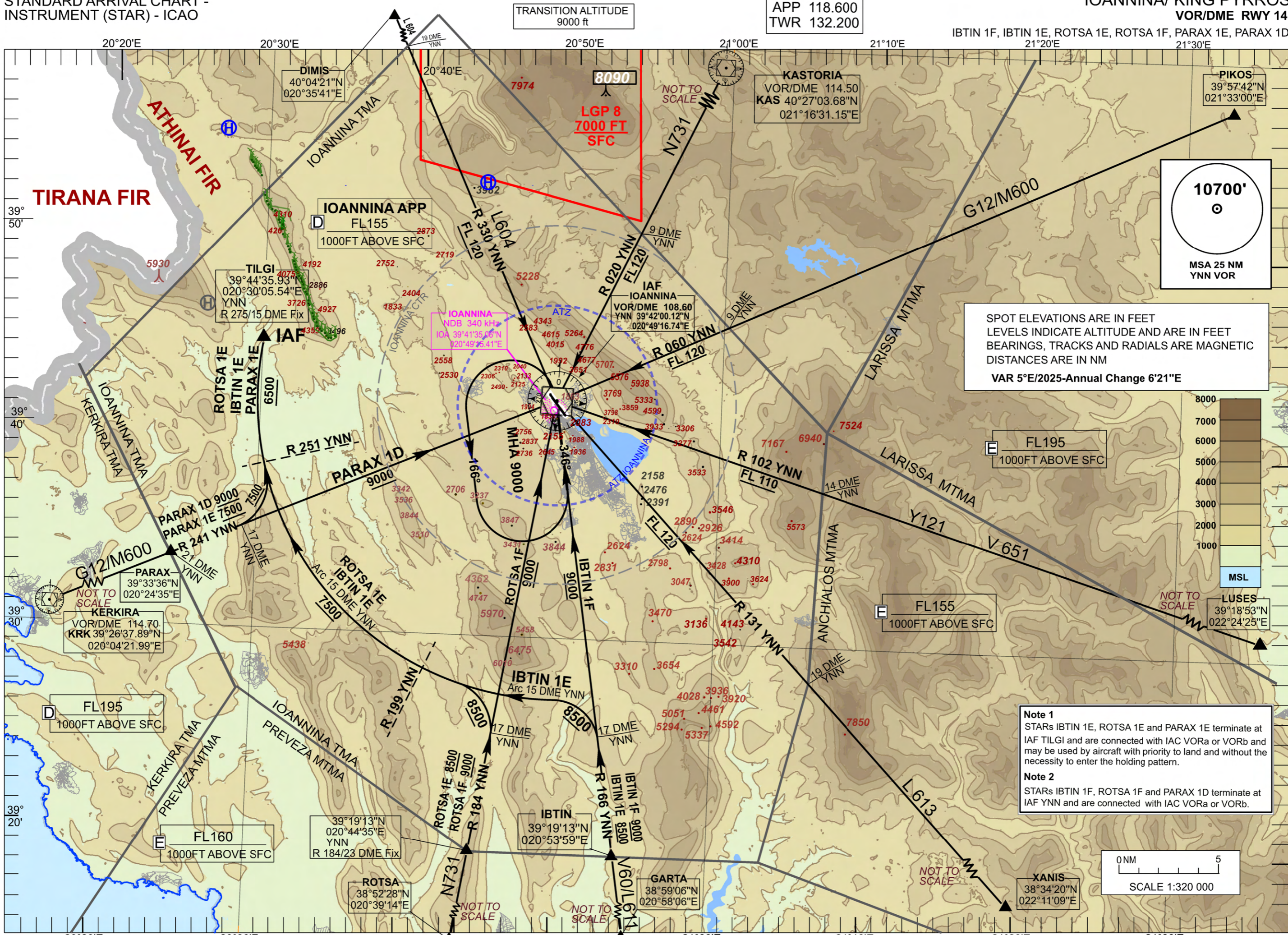


STANDARD ARRIVAL CHART - INSTRUMENT (STAR) - ICAO

IOANNINA/ KING PYRROS VOR/DME RWY 14



TRANSITION ALTITUDE 9000 ft

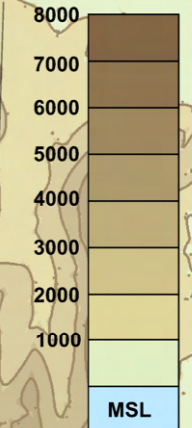
APP 118.600 TWR 132.200

IBTIN 1F, IBTIN 1E, ROTSA 1E, ROTSA 1F, PARAX 1E, PARAX 1D

10700'

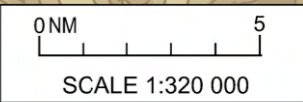
MSA 25 NM YNN VOR

SPOT ELEVATIONS ARE IN FEET
 LEVELS INDICATE ALTITUDE AND ARE IN FEET
 BEARINGS, TRACKS AND RADIALS ARE MAGNETIC
 DISTANCES ARE IN NM
 VAR 5°E/2025-Annual Change 6'21\"/>



Note 1
 STARs IBTIN 1E, ROTSA 1E and PARAX 1E terminate at IAF TILGI and are connected with IAC VORa or VORb and may be used by aircraft with priority to land and without the necessity to enter the holding pattern.

Note 2
 STARs IBTIN 1F, ROTSA 1F and PARAX 1D terminate at IAF YNN and are connected with IAC VORa or VORb.



Changes: AWY L611, Y121