

STANDARD DEPARTURE CHART - INSTRUMENT

RJFS / SAGA

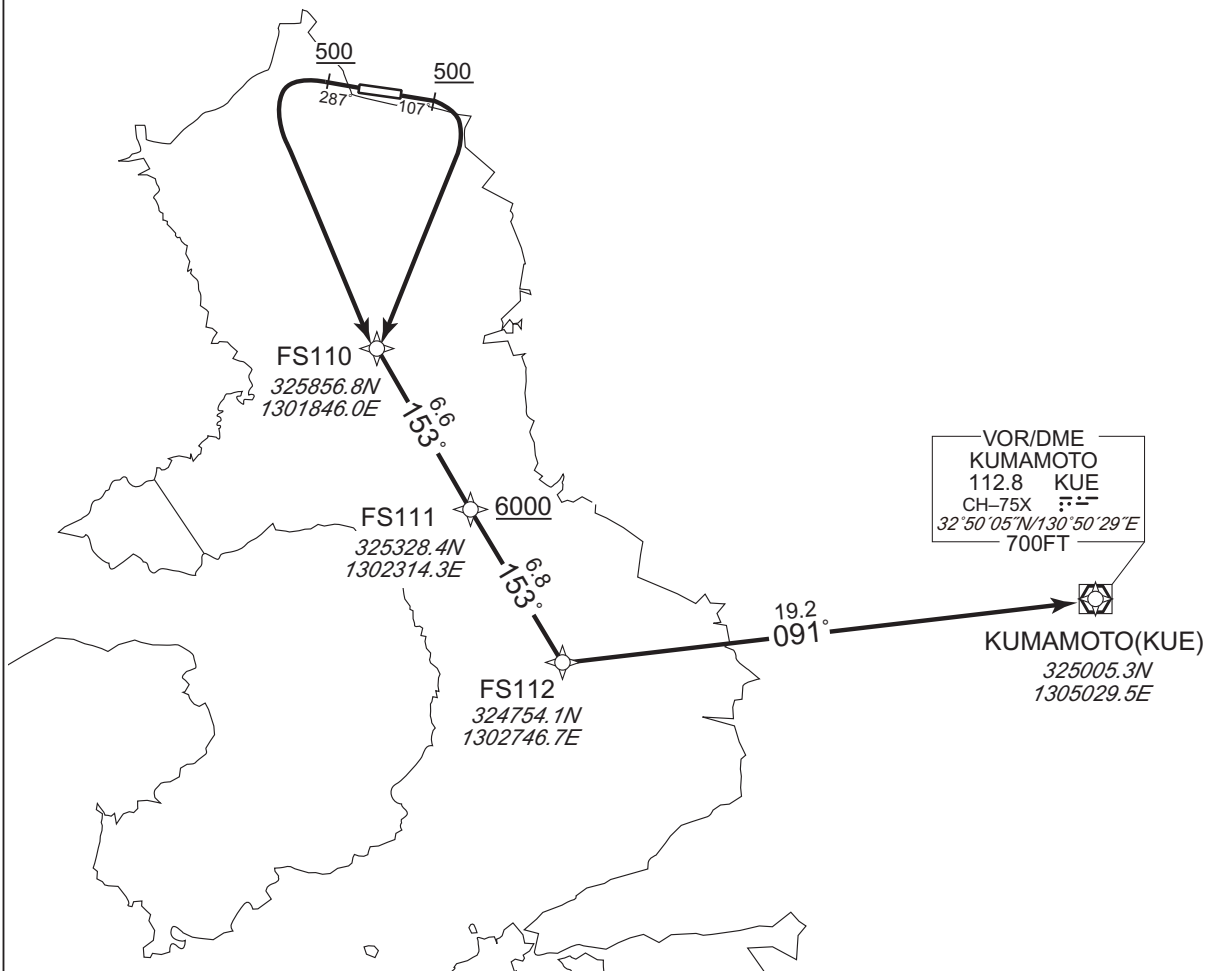
RNAV SID

SOIGI TWO DEPARTURE

RNP1

Note GNSS required.

VAR 8° W



CHANGE : PROC course. PROC renamed. VAR.

RWY11 : Climb on HDG107° at or above 500FT, turn right direct to FS110, to FS111 at or above 6000FT, to FS112, to KUE.

RWY29 : Climb on HDG287° at or above 500FT, turn left direct to FS110, to FS111 at or above 6000FT, to FS112, to KUE.

NOTE RWY29 : 3.5% climb gradient required up to 500FT.

STANDARD DEPARTURE CHART - INSTRUMENT

RJFS / SAGA

RNAV SID

SOIGI TWO DEPARTURE

RWY11

Serial Number	Path Descriptor	Waypoint Identifier	Fly Over	Course °M(°T)	Magnetic Variation	Distance (NM)	Turn Direction	Altitude (FT)	Speed (KIAS)	Vertical Angle	Navigation Specification
001	VA	-	-	107 (099.3)	-7.9	-	-	+500	-	-	RNP1
002	DF	FS110	-	-	-7.9	-	R	-	-	-	RNP1
003	TF	FS111	-	153 (145.5)	-7.9	6.6	-	+6000	-	-	RNP1
004	TF	FS112	-	153 (145.6)	-7.9	6.8	-	-	-	-	RNP1
005	TF	KUE	-	091 (083.4)	-7.9	19.2	-	-	-	-	RNP1

RWY29

Serial Number	Path Descriptor	Waypoint Identifier	Fly Over	Course °M(°T)	Magnetic Variation	Distance (NM)	Turn Direction	Altitude (FT)	Speed (KIAS)	Vertical Angle	Navigation Specification
001	VA	-	-	287 (279.3)	-7.9	-	-	+500	-	-	RNP1
002	DF	FS110	-	-	-7.9	-	L	-	-	-	RNP1
003	TF	FS111	-	153 (145.5)	-7.9	6.6	-	+6000	-	-	RNP1
004	TF	FS112	-	153 (145.6)	-7.9	6.8	-	-	-	-	RNP1
005	TF	KUE	-	091 (083.4)	-7.9	19.2	-	-	-	-	RNP1

CHANGE : PROC course. PROC renamed. VAR.