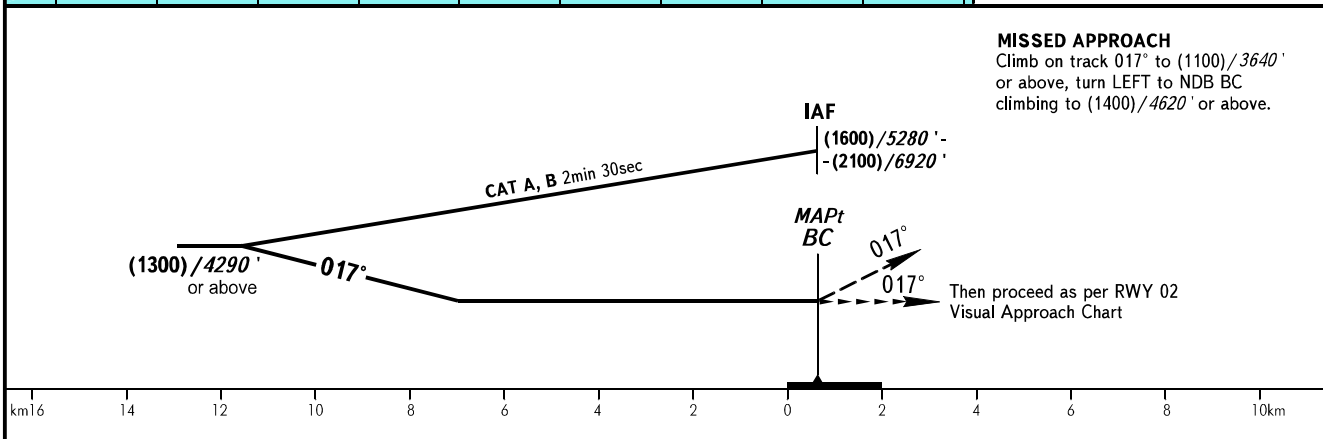
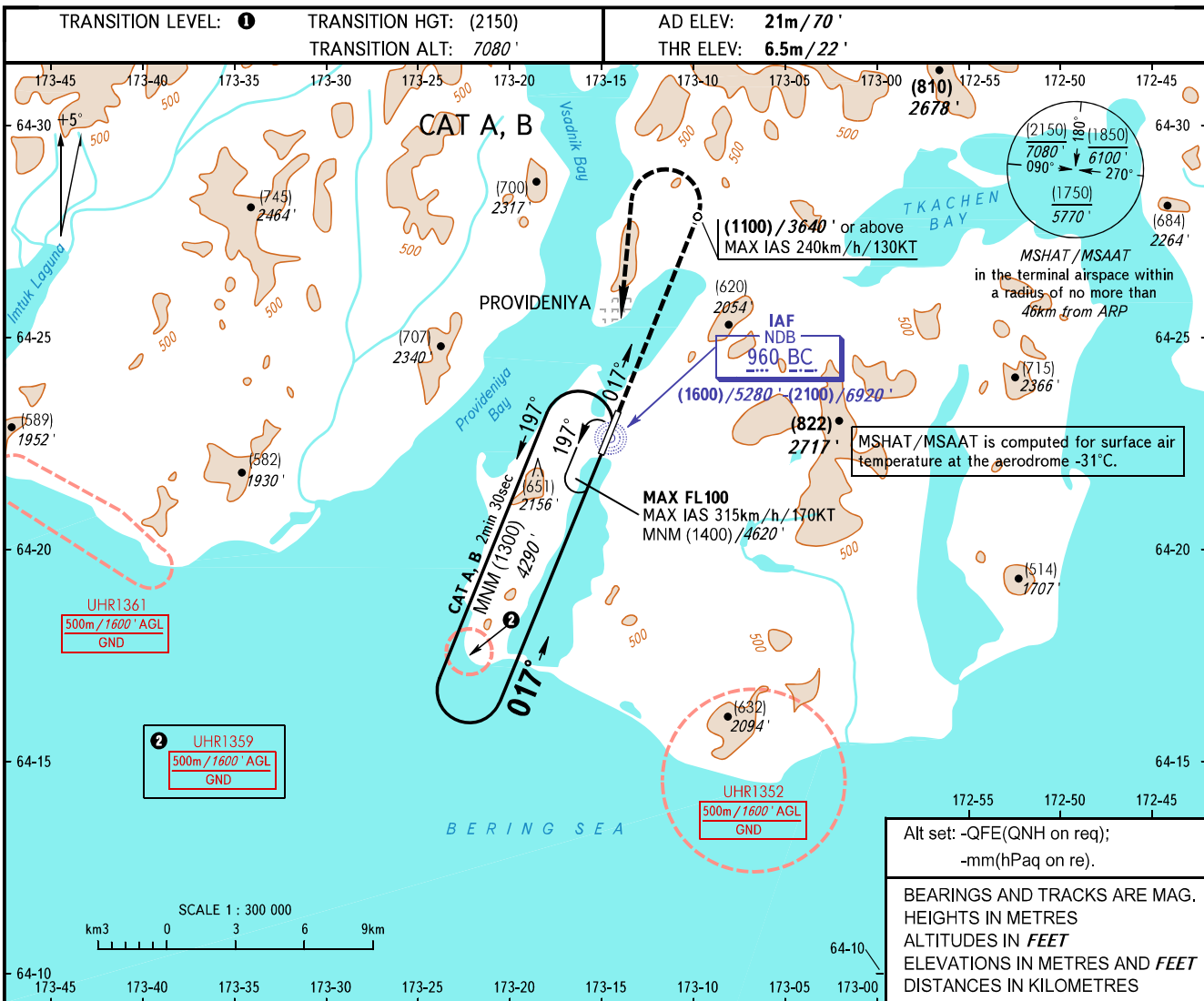


**INSTRUMENT  
APPROACH  
CHART - ICAO**

PROVIDENIYA TOWER 119.300

**PROVIDENIYA BAY, RUSSIA  
PROVIDENIYA  
NDB A RWY 02**



OCA(H)	A	B	C	D	
Straight-in Approach					<b>①</b> TRANSITION LEVEL: - FL090 when QFE is 760mm mercury column (1013 hPa) or above; - FL100 when QFE is 733mm mercury column (977 hPa) or above, but less than 760mm mercury column (1013 hPa); - FL110 when QFE is less than 733mm mercury column (977 hPa).  <b>③</b> HGT is given relative to RWY 02 THR ELEV.  <b>WARNING:</b> 1. Turn before passing MAPt is PROHIBITED. 2. Instrument approach procedure shall be executed until reaching OCA(H) - Circling, then proceed as per RWY 02 Visual Approach Chart along the prescribed track. 3. MAPt at NDB BC. Timing not authorized for defining MAPt. 4. Increased turbulence with down-draughts can be expected on final.
Circling	③ 990/(985) 3250'	③ 990/(985) 3250'			

CHANGE: New chart