

STANDARD DEPARTURE CHART -INSTRUMENT

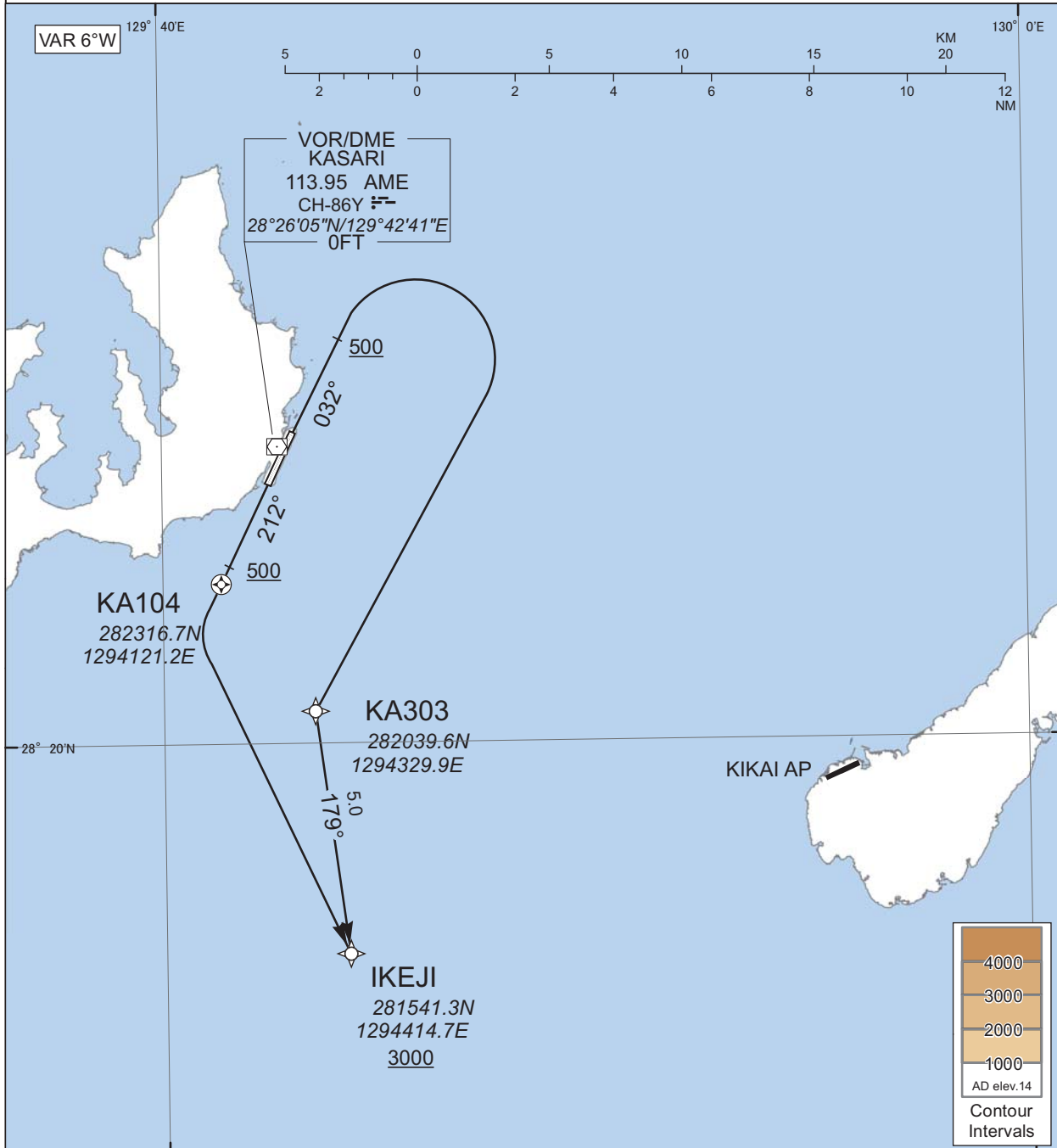
RJKA / AMAMI

RNAV SID

IKEJI ONE DEPARTURE

RNP1

Note GNSS required.



CHANGE : Navigation Specification(Basic RNP1 →RNP1).

RWY03 : Climb on HDG032° at or above 500FT, turn right direct to KA303, to IKEJI at or above 3000FT.

RWY21 : Climb on HDG212° at or above 500FT, direct to KA104, turn left direct to IKEJI at or above 3000FT.

Note RWY03 : 5.0% climb gradient required up to 500FT.
RWY21 : 5.0% climb gradient required up to 500FT.

STANDARD DEPARTURE CHART -INSTRUMENT

RJKA / AMAMI

RNAV SID

IKEJI ONE DEPARTURE

RWY03

Serial Number	Path Descriptor	Waypoint Identifier	Fly Over	Course °M(°T)	Magnetic Variation	Distance (NM)	Turn Direction	Altitude (FT)	Speed (KIAS)	Vertical Angle	Navigation Specification
001	VA	-	-	032 (025.8)	-6.4	-	-	+500	-	-	RNP1
002	DF	KA303	-	-	-6.4	-	R	-	-	-	RNP1
003	TF	IKEJI	-	179 (172.5)	-6.4	5.0	-	+3000	-	-	RNP1

RWY21

Serial Number	Path Descriptor	Waypoint Identifier	Fly Over	Course °M(°T)	Magnetic Variation	Distance (NM)	Turn Direction	Altitude (FT)	Speed (KIAS)	Vertical Angle	Navigation Specification
001	VA	-	-	212 (205.8)	-6.4	-	-	+500	-	-	RNP1
002	DF	KA104	Y	-	-6.4	-	-	-	-	-	RNP1
003	DF	IKEJI	-	-	-6.4	-	L	+3000	-	-	RNP1

CHANGE : Navigation Specification(Basic RNP1 → RNP1).