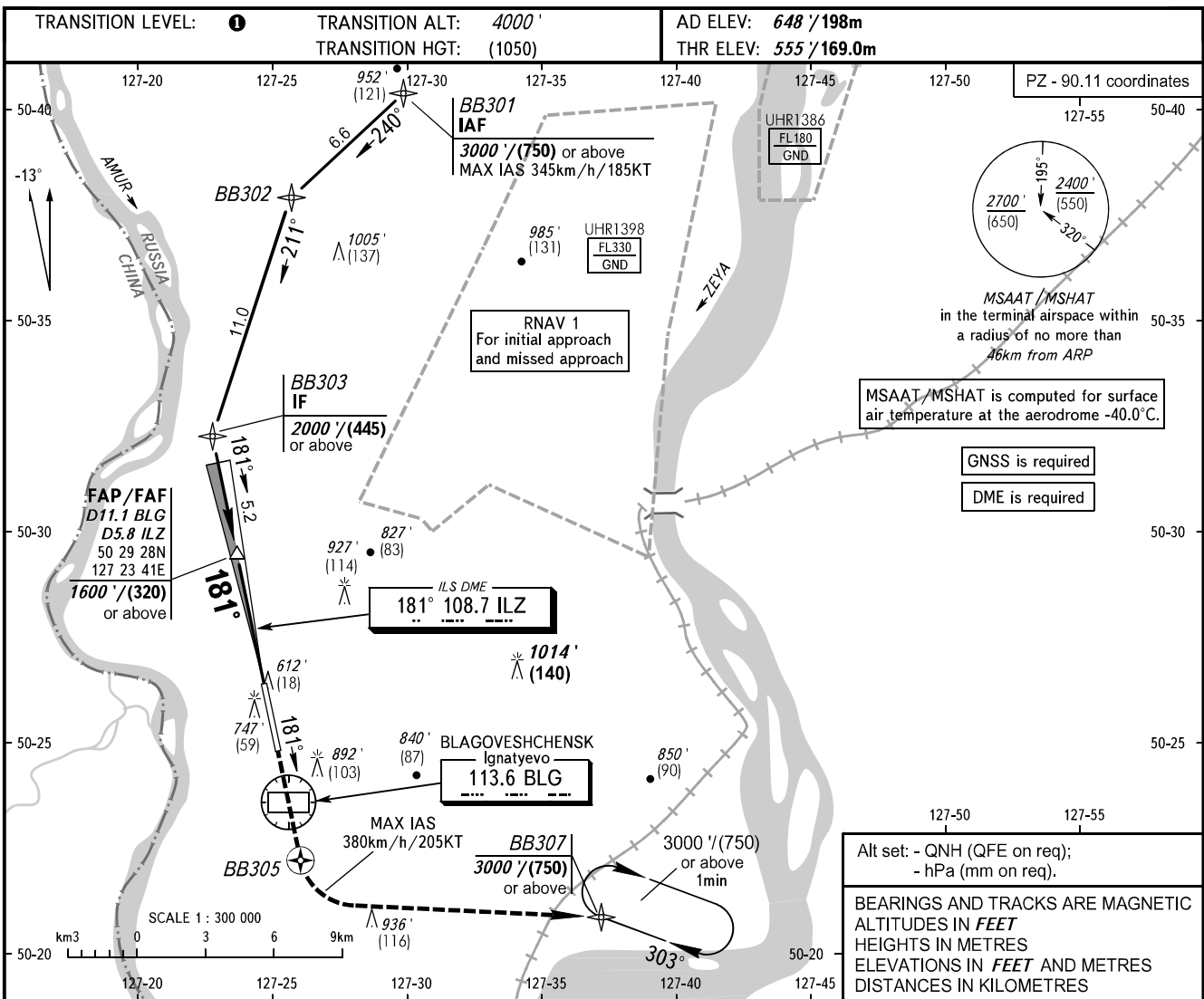


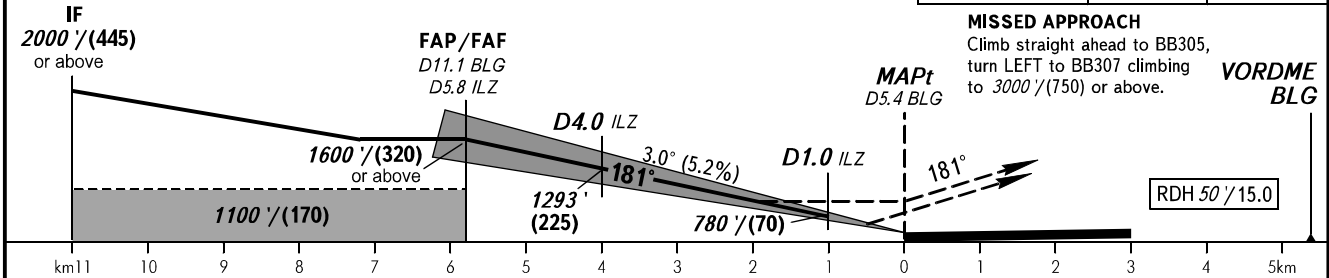
**INSTRUMENT
APPROACH
CHART - ICAO**

BLAGOVESHCHENSK TOWER 127.200

**BLAGOVESHCHENSK, RUSSIA
IGNATYEVO
ILS Z, LOC Z RWY 18**



DME BLG	10.0	8.0
ALTITUDE/HEIGHT	1413' / (262)	1069' / (157)



OCA(H)		A	B	C	D				
Straight-in	CAT I	705' (150') (46)	716' (161') (50)	729' (174') (54)	743' (188') (58)				
	LOC	1000' (440') (135)	1000' (440') (135)	1000' (440') (135)	1000' (440') (135)				
Circling		1190' (540') (165)	1220' (570') (175)	1330' (680') (210)	1340' (700') (215)				
GROUND SPEED	km/h		150	180	210	240	270	300	330
	kt		81	97	113	130	146	162	178
RATE OF DESCENT	m/s		2.2	2.6	3.0	3.5	3.9	4.3	4.8
	ft/min		427	512	597	682	768	853	938

TRANSITION LEVEL:
- FL050 when QNH is 1013 hPa (760mm mercury column) or above;
- FL060 when QNH is 977 hPa (733mm mercury column) or above, but less than 1013 hPa (760mm mercury column);
- FL070 when QNH is less than 977 hPa (733mm mercury column).

WARNING:
1. DME ILZ reads zero at RWY 18 THR.
2. FAF - MAPt 5.8km. Timing not authorized for defining MAPt.

Visual manoeuvring to the west of AD is PROHIBITED.

CHANGE: New chart