

MIPS

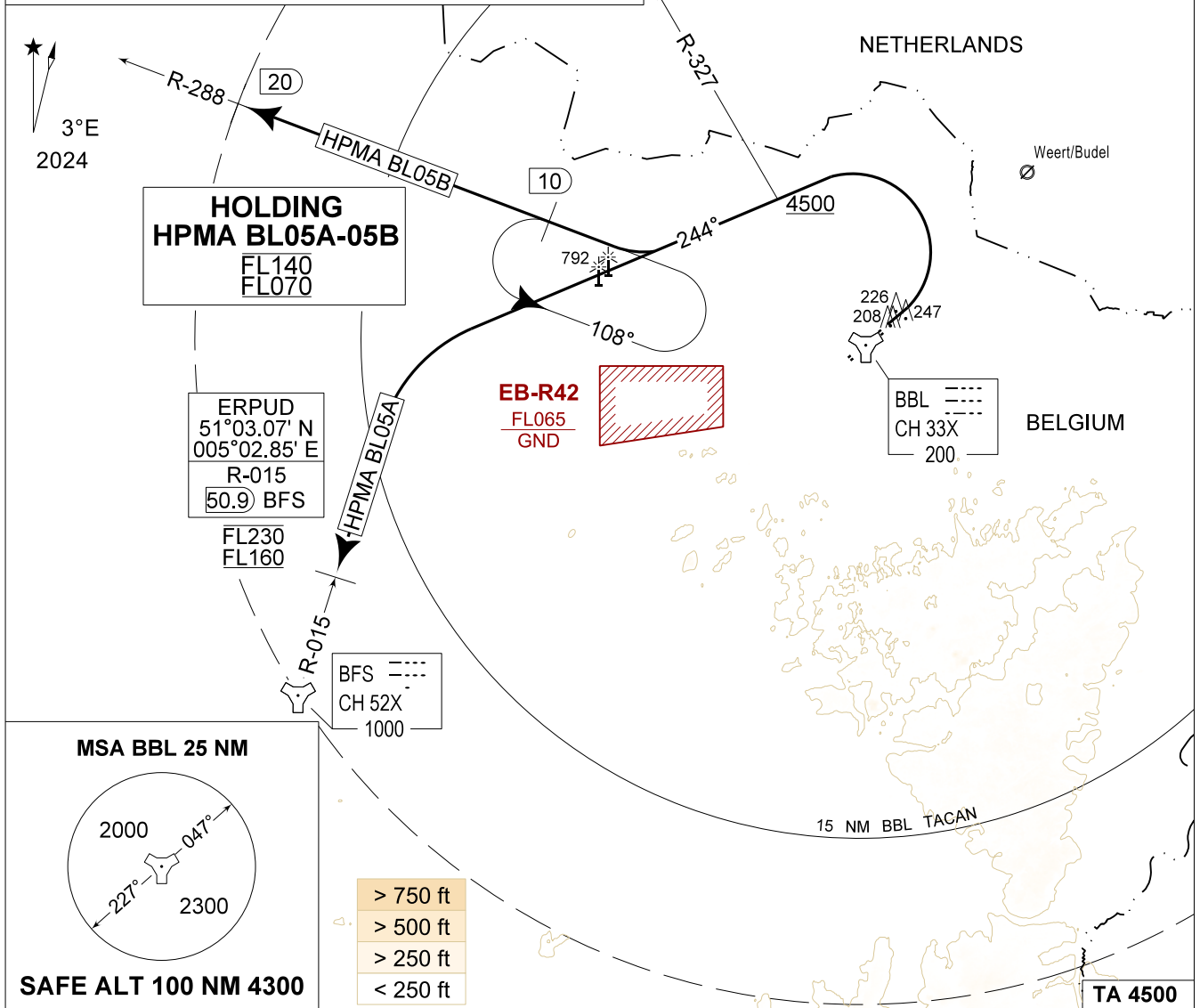
INSTRUMENT DEPARTURE CHART

AD ELEV 192

**HPMA BL 05A - 05B
KLEINE-BROGEL (EBBL)**

KLEINE-BROGEL GND 362.775 122.100	KLEINE-BROGEL TWR 248.075 134.105	KLEINE-BROGEL APP 337.600 134.480	BELGA RADAR 374.400 129.325					
TACAN BBL - CH 33X	RWY 05	PDG 8.75% 5.00°	From-To DER-4500	120 1070	180 1600	240 2130	300 2660	Reason ATC

CAUTION:
a) ATC MONITORING REQUIRED TO REMAIN WITHIN BEL
b) NO TURN BEFORE 1.3 DME BBL
c) FIRST TURN MAX 300 KIAS



<p>HPMA BL05A (RWY 05)</p> <p>29</p>	<ul style="list-style-type: none"> - Climb RWY heading and contact EBBL APP. - Pass 600 FT AMSL or 1.3 DME BBL, whichever comes the latest, turn left track 244° at MAX 300 KIAS. - Pass R-327 at or above 4500 FT AMSL and contact BELGA RADAR. - Intercept R-015 inbound BFS TACAN. - Proceed to entry REMBA corridor ERPUD, 50.9 DME R-015 BFS TACAN between FL160 and FL230 as instructed and maintain level.
<p>HPMA BL05B (RWY 05)</p> <p>28</p>	<ul style="list-style-type: none"> - Climb RWY heading and contact EBBL APP. - Pass 600 FT AMSL or 1.3 DME BBL, whichever comes the latest, turn left track 244° at MAX 300 KIAS. - Pass R-327 at or above 4500 FT AMSL and contact BELGA RADAR. - Intercept R-288 outbound BBL TACAN. - Follow R-288 till 20 DME.

HPMA BL 05A - 05B

51°10.10' N
005°28.19' E

KLEINE-BROGEL (EBBL)

CHANGE: General revision

BEL DEFENCE, AIR COMPONENT 28-NOV-2024 - THS