

CHERRY POINT, NORTH CAROLINA

HI-TACAN Y RWY 14L

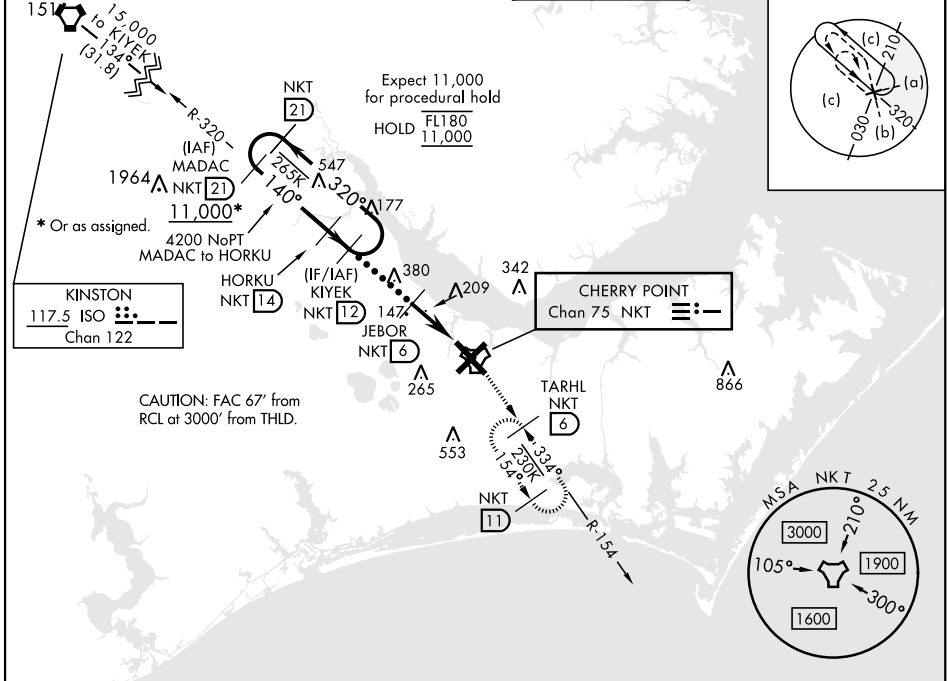
TACAN NKT Chan 75	APCH CRS 140°	Rwy ldg TDZE 8979 26 29
----------------------	------------------	----------------------------------

[USN]

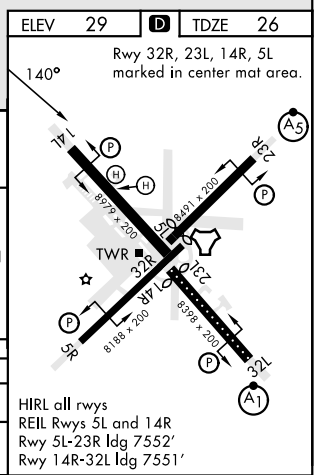
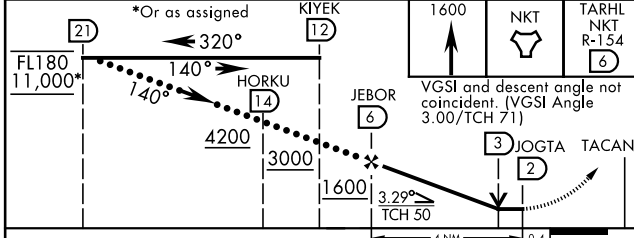
CHERRY POINT MCAS (CUNNINGHAM FLD) (KNKT)

MISSED APPROACH: Climb to 1600 to NKT TACAN and fly NKT R-154 to TARHL and hold.

ATIS 127.475 244.875	APP CON 119.75 360.775 (E) (abv 2600') 132.575 299.6 (E) (at/blw 2600') 119.35 377.175 (W) 124.1 268.7 (N)	TOWER 121.3 340.2	GND CON 128.625 239.025	CLNC DEL 125.95 316.125	ASR/PAR
----------------------------	---	----------------------	-------------------------------	-------------------------------	---------



ELEV 29	TDZE 26
Rwy 32R, 23L, 14R, 5L marked in center mat area.	



CATEGORY	C	D	E
S-14L	500-1 $\frac{3}{8}$	474 (500-1 $\frac{3}{8}$)	
CIRCLING	580-1 $\frac{1}{2}$ 551 (600-1 $\frac{1}{2}$)	580-2 551 (600-2)	700-2 $\frac{1}{2}$ 671 (700-2 $\frac{1}{2}$)

HIRL all rwys
REIL Rwys 5L and 14R
Rwy 5L-23R ldg 7552'
Rwy 14R-32L ldg 7551'

CHERRY POINT, NORTH CAROLINA 34° 54' N-76° 53' W CHERRY POINT MCAS (CUNNINGHAM FLD) (KNKT)

Amdt 9 02NOV23

HI-TACAN Y RWY 14L

SE-2, 20 MAR 2025 to 17 APR 2025

SE-2, 20 MAR 2025 to 17 APR 2025