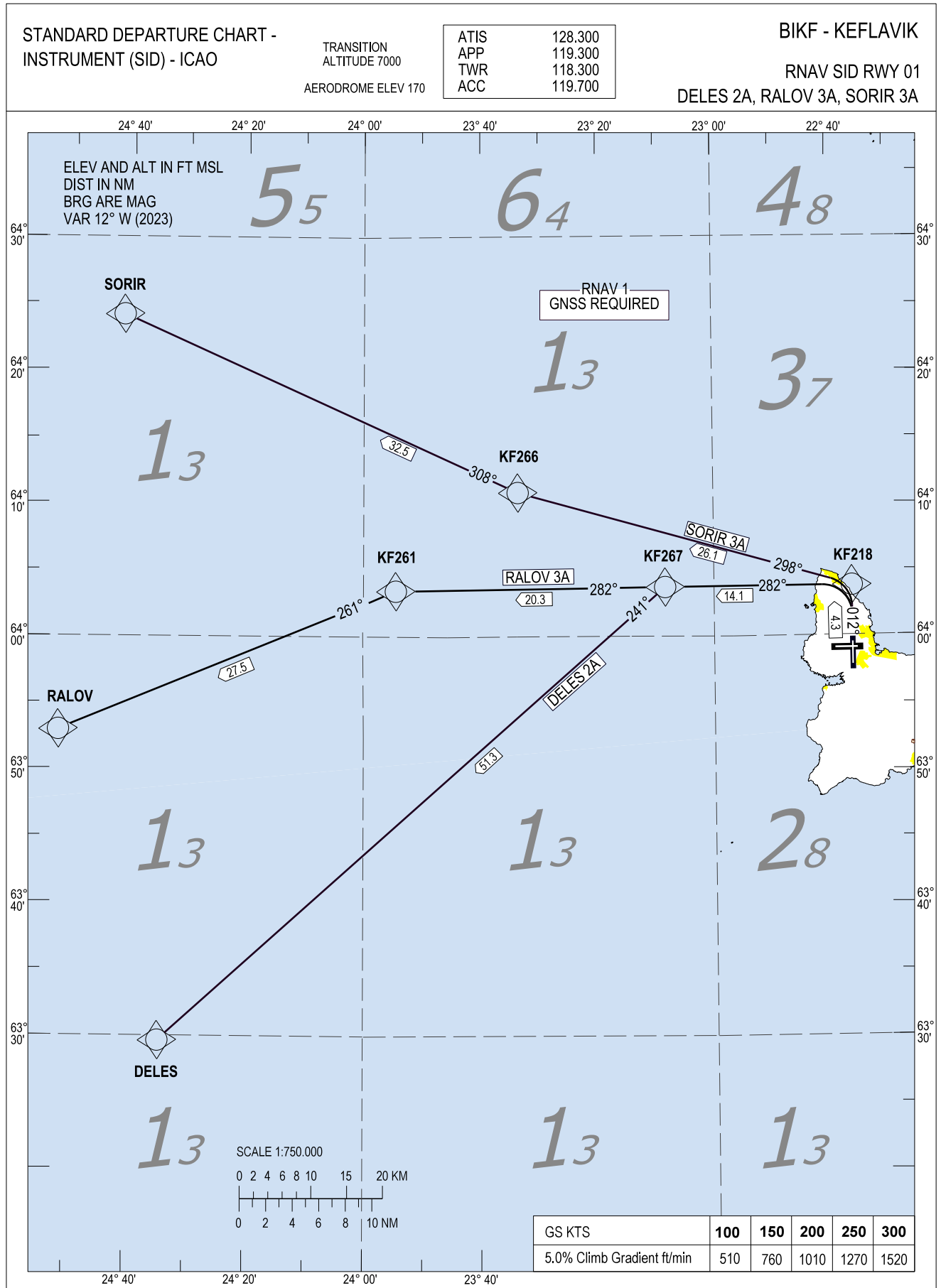


Keflavik RNAV SID RWY 01 - DELES 2A, RALOV 3A, SORIR 3A



STANDARD DEPARTURE CHART -
INSTRUMENT (SID) - ICAO

BIKF - KEFLAVIK

RNAV SID RWY 01
DELES 2A, RALOV 3A, SORIR 3A

- GENERAL:** Vectoring may be used when necessary.
Loss of RNAV 1 capability - Advise ATC.
Maximum speed below FL100: 250 kt IAS unless otherwise instructed by ATC.
Expect first CPDLC Data Link Authority to be BIRD.
- RADIO COMMUNICATION FAILURE:** Set transponder to A 7600.
Proceed in accordance with the departure clearance routing and restrictions then in accordance with enroute clearance.
If under vectoring proceed in the most direct manner to join the cleared route and proceed in accordance with the ATC clearance. After that no route, flight level, or speed change shall be made before the Oceanic Exit Point unless a change is deemed necessary by the pilot in command to ensure the safety of the aircraft.
- ATC CLEARANCE:** Departing IFR flights shall obtain ATC clearance from "Keflavik Delivery" 121.000 MHz.
- NON RNAV 1 ACFT:** At first contact with "Keflavik Delivery" state "UNABLE RNAV 1", OMNI-DIRECTIONAL DEPARTURE available (see BIKF AD2.24).
- NOISE ABATEMENT:** NADP-2

DESIGNATOR	ROUTE	RESTRICTIONS	After Take-off	
			Climb to	Contact
DELES 2A (DELES TWO ALPHA DEPARTURE)	To KF218 on course 012°, left turn to KF267, left turn to DELES	A MNM climb gradient of 5.0% i.e. 304 FT/NM is required until 2000 FT.	As cleared by ATC.	Contact KEFLAVIK APP 119.300
RALOV 3A (RALOV THREE ALPHA DEPARTURE)	To KF218 on course 012°, left turn to KF267, to KF261, left turn to RALOV	A MNM climb gradient of 5.0% i.e. 304 FT/NM is required until 2000 FT.	As cleared by ATC.	Contact KEFLAVIK APP 119.300
SORIR 3A (SORIR THREE ALPHA DEPARTURE)	To KF218 on course 012°, left turn to KF266, to SORIR	A MNM climb gradient of 5.0% i.e. 304 FT/NM is required until 2000 FT.	As cleared by ATC.	Contact KEFLAVIK APP 119.300

CHANGES: RADIO COMMUNICATION FAILURE