

**STANDARD DEPARTURE CHART  
INSTRUMENT (SID)**

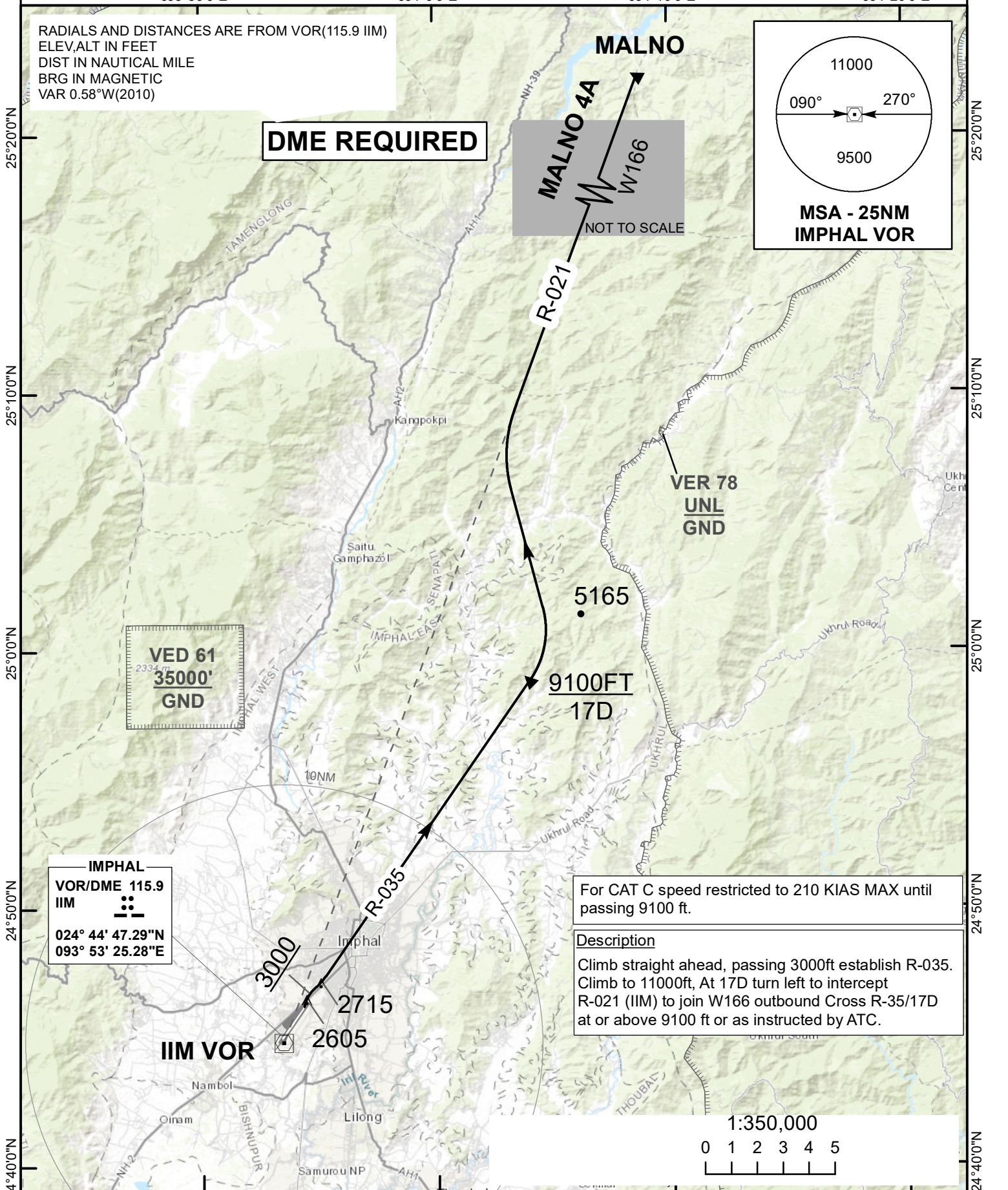
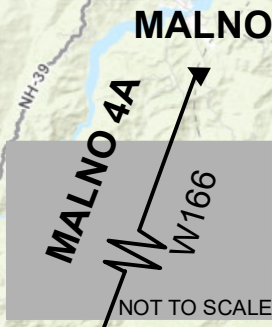
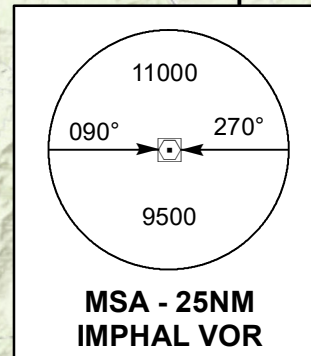
**TRANSITION ALT  
11000**

**TWR 124.350/118.550**

**IMPHAL (VEIM)  
INDIA  
MALNO 4A  
RWY 04  
(CAT A/B/C)**

RADIALS AND DISTANCES ARE FROM VOR(115.9 IIM)  
ELEV,ALT IN FEET  
DIST IN NAUTICAL MILE  
BRG IN MAGNETIC  
VAR 0.58°W(2010)

**DME REQUIRED**



**VED 61**  
2334 m  
**35000'**  
**GND**

**IMPHAL**  
VOR/DME 115.9  
IIM  
024° 44' 47.29"N  
093° 53' 25.28"E

For CAT C speed restricted to 210 KIAS MAX until passing 9100 ft.

**Description**  
Climb straight ahead, passing 3000ft establish R-035. Climb to 11000ft, At 17D turn left to intercept R-021 (IIM) to join W166 outbound Cross R-35/17D at or above 9100 ft or as instructed by ATC.

