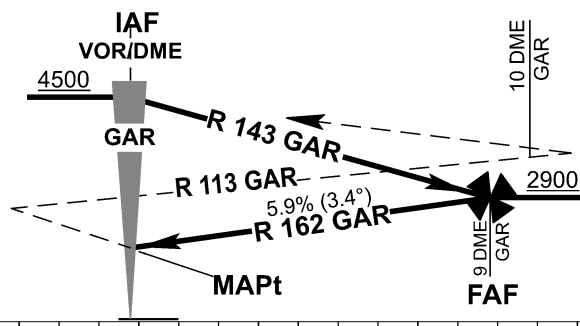


TRANSITION ALT 5000ft

**MISSED APPROACH:**  
Turn right to track 158°, intercept and follow R 113 GAR. At R113 GAR/10 DME turn right direct to GAR and hold. Climb to 4500.



THR ELEV 5ft  
nm to/from THR RWY 34

OCA/H	A	B	C	D
Straight-in Approach	2000 (2000)			
Circling EAST of RWY	2000 (2000)			

Altitude/Height on Final Approach	8 DME	7 DME
	2540 (2535)	2180 (2175)

Rate of descent	nm/h	100	130	160	190
	ft/min	597	777	956	1135

**FAF (R 162 GAR/9 DME):** 39°27'35.14"N  
019°57'09.90"E