

# STANDARD DEPARTURE CHART-INSTRUMENT

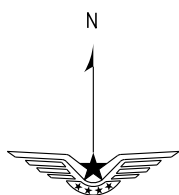
D-ATIS 127.85  
APP01 120.45 (124.75)  
APP02 119.125 (124.75)  
VAR 6.1° W TWR 118.35 (123.65)

ZBSJ SHIJIAZHUANG/Zhengding  
RWY 33 (AREKU/UKMIS)

BEARINGS ARE MAGNETIC.  
ALTITUDES, ELEVATIONS  
AND HEIGHTS IN METERS.  
DME DISTANCES IN  
NAUTICAL MILES.  
DISTANCES IN KM.

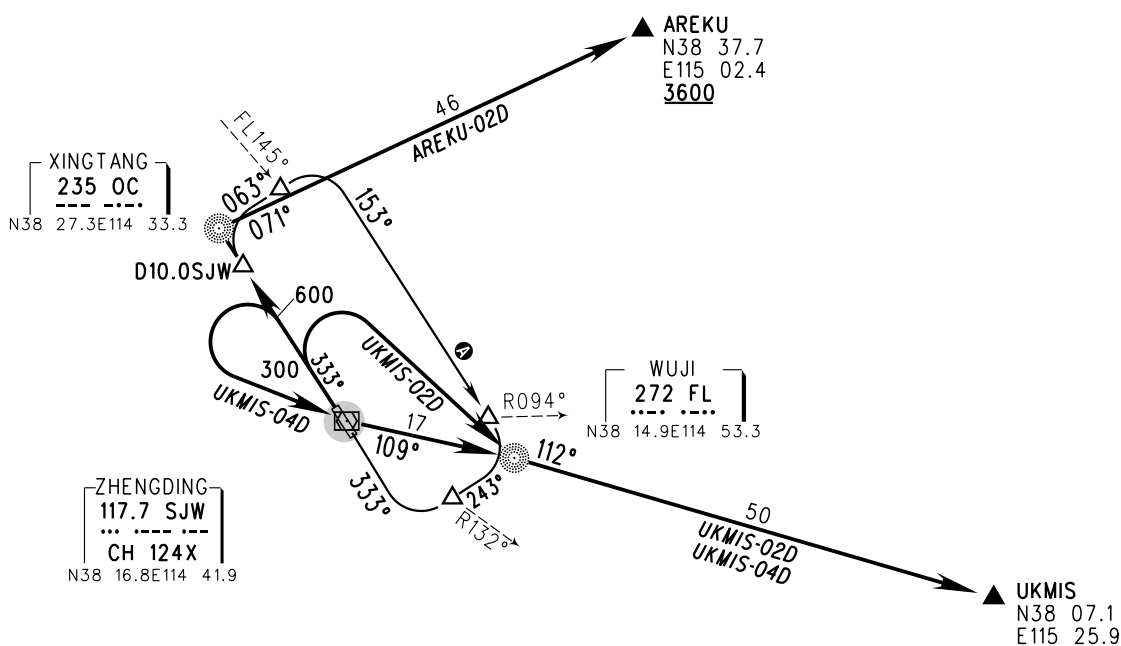
This chart used by ATC

TL 3600  
TA 3000  
3300 (QNH ≥ 1031hPa)  
2700 (QNH ≤ 979hPa)

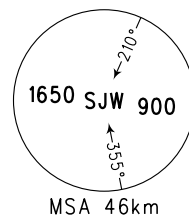


NOT TO SCALE

Departure turn MAX IAS 380km/h



- A** Departure spiral climb procedure:  
climb straight after departure, fly to D10.0SJW and turn RIGHT,  
along bearing 063° from OC to FL145°, turn RIGHT and  
along bearing 153° to FL, fly to R094° SJW and turn RIGHT,  
along bearing 243° from FL to R132° SJW and turn RIGHT,  
along bearing 333° to OC, fly to D10.0SJW and turn RIGHT,  
continue to spiral climb, follow ATC instructions to join in en-route  
flight until climbing to ATC designated altitude.



Changes: Note, chart symbol.