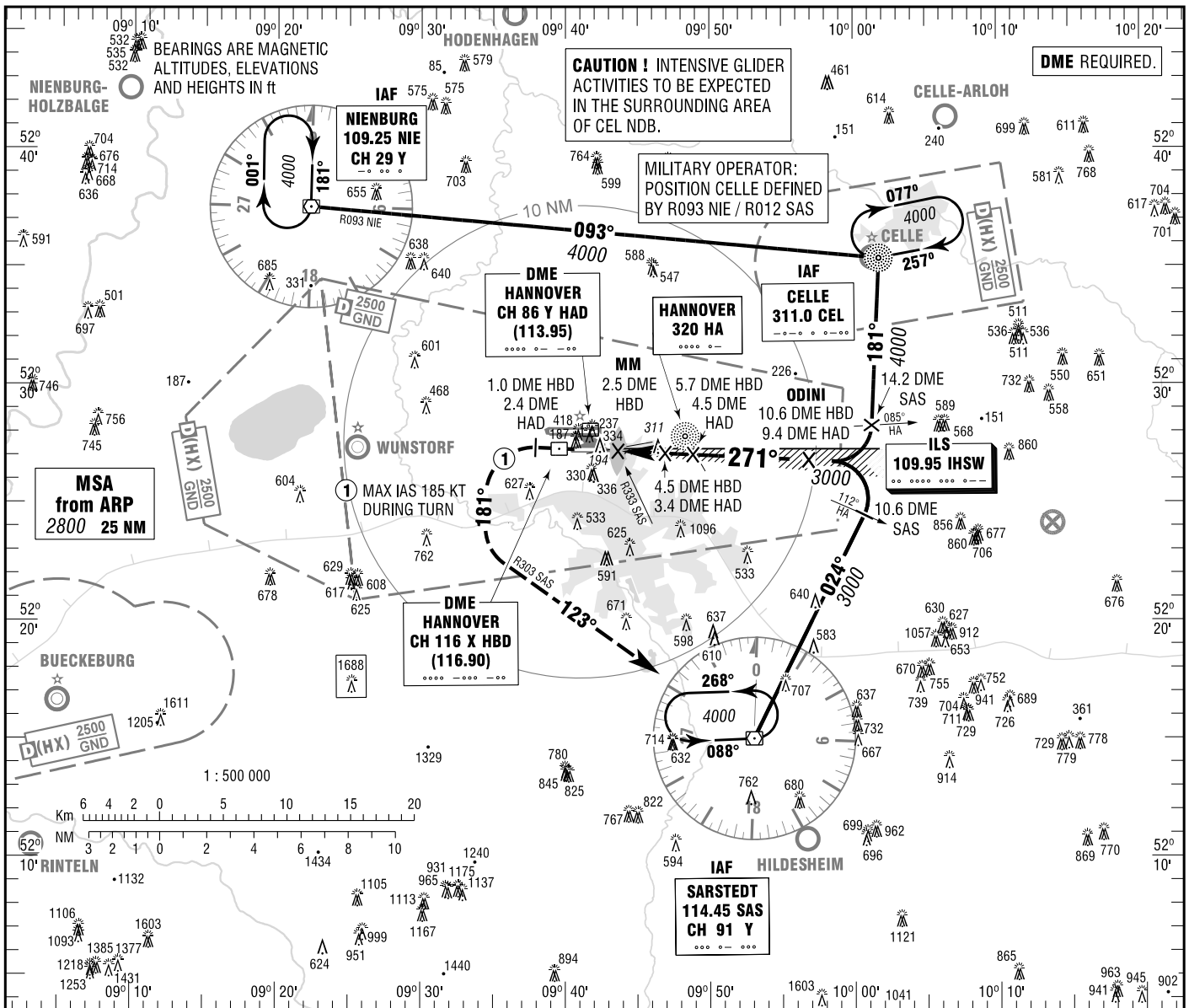


**INSTRUMENT  
APPROACH  
CHART - ICAO**

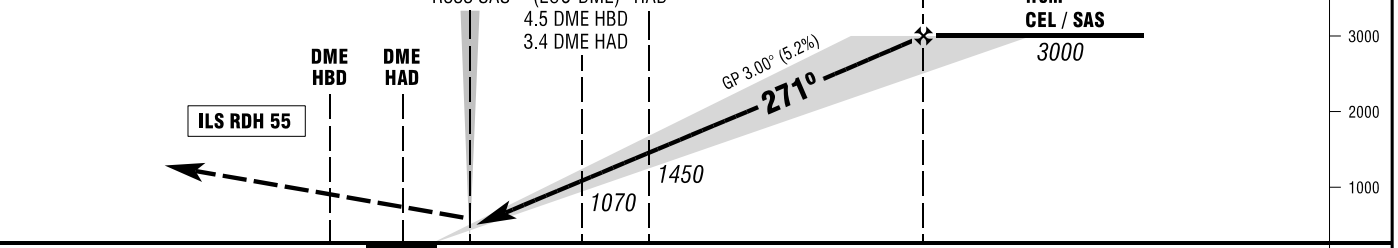
VAR 2° E  
ELEV 183  
OCH RELATED TO  
THR 27L ELEV 179

HANNOVER ATIS 136.575 HANNOVER TOWER 120.180  
BREMER RADAR 119.490 HANNOVER GROUND 121.955  
HANNOVER ARRIVAL 119.605

**HANNOVER  
ILS Z or LOC Z  
RWY 27L**



**MISSED APPROACH PROCEDURE**  
Climb straight ahead to 1.0 DME WEST of HBD (2.4 DME WEST of HAD); LT on heading 181° to intercept and follow R303 SAS to SAS climbing 4000. After 1.0 DME HBD max 185 KT IAS during turn.



NM 6 5 4 3 2 1 0 1 2 3 4 5 6 7 8 9 10 11 12 13 14 NM  
PROFILE SCALE 1 : 250 000

OCA (OCH)	A	B	C	D
ILS-DME CAT I	325 (146)	335 (156)	345 (166)	355 (176)
LOC-DME	560 (380)	560 (380)	560 (380)	560 (380)

DME HBD	3	4	5	6	7	8	9	10
DIST THR	1.1	2.1	3.1	4.1	5.1	6.1	7.1	8.1
ALTITUDE	590	910	1220	1540	1860	2180	2500	2820

**LOC-DME:** Timing not authorized for defining the MAPt.

GS	kt	80	100	120	140	160	180
5.7 DME HBD - THR (3.8 NM)	MIN:SEC	2:51	2:17	1:54	1:38	1:26	1:16
Rate of descent (5.2%)	ft / MIN	420	530	640	740	850	960

Correction: Callsign only.