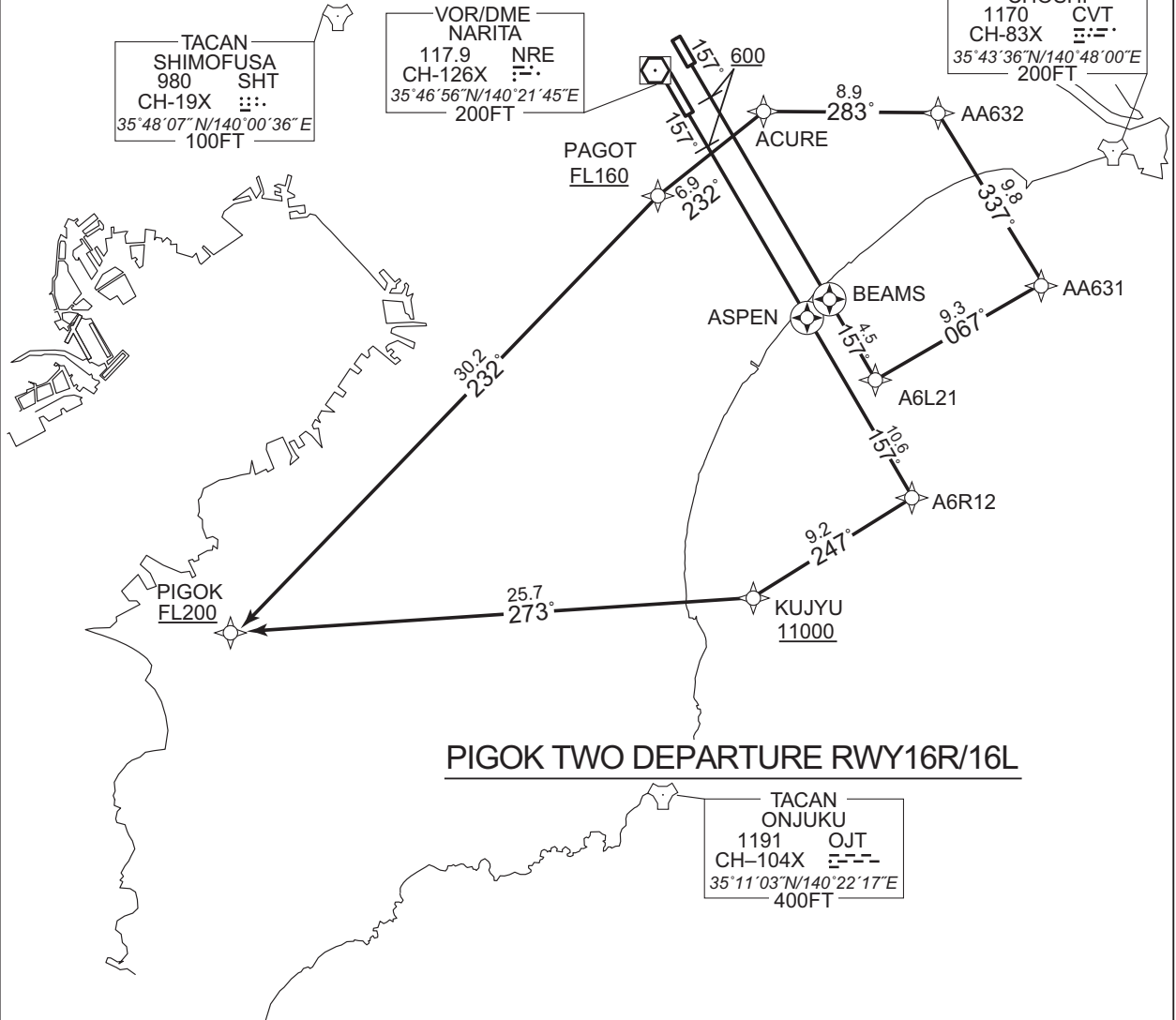
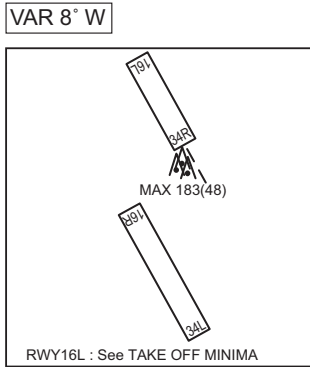


STANDARD DEPARTURE CHART -INSTRUMENT

RJAA / NARITA INTL

RNAV SID

PIGOK TWO DEPARTURE		RNAV1
Note 1) DME/DME/IRU or GNSS required. ※The aircraft equipped with only DME/DME/IRU must be able to update its position without delay at the starting point of take-off rolling. 2) RADAR service required.	Critical DME	RWY16R:TLD DER – 1.3NM FM DER RWY16L:TLD DER – 3.4NM FM DER
	DME GAP	RWY34L :DER – 1.3NM FM DER
	Inappropriate Nav aids	See AD1.1.6.10.3.Inappropriate NAVAIDs for RNAV1



CHANGE : Description of VAR.

STANDARD DEPARTURE CHART -INSTRUMENT

RJAA / NARITA INTL

RNAV SID

VAR 8° W

DME
MORIYA
1174 SND
CH-87X ≡≡
35°56'06"N/139°58'52"E
100FT

TACAN
SHIMOFUSA
980 SHT
CH-19X ≡≡
35°48'07"N/140°00'36"E
100FT

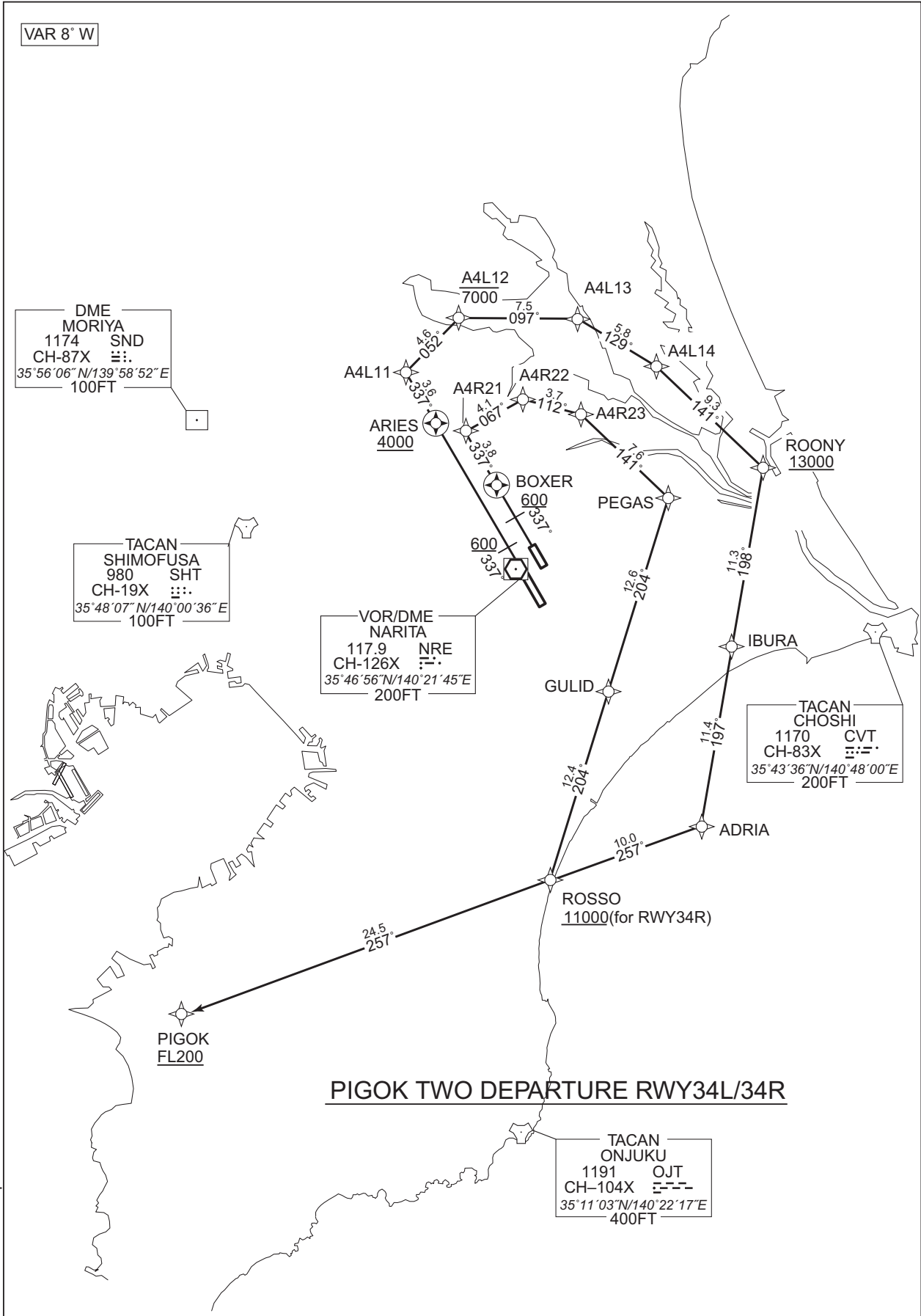
VOR/DME
NARITA
117.9 NRE
CH-126X ≡≡
35°46'56"N/140°21'45"E
200FT

TACAN
CHOSHI
1170 CVT
CH-83X ≡≡
35°43'36"N/140°48'00"E
200FT

TACAN
ONJUKU
1191 OJT
CH-104X ≡≡
35°11'03"N/140°22'17"E
400FT

PIGOK TWO DEPARTURE RWY34L/34R

CHANGE : Description of VAR.



STANDARD DEPARTURE CHART -INSTRUMENT

RJAA / NARITA INTL

RNAV SID

PIGOK TWO DEPARTURE

RWY16R : Climb on HDG 157° at or above 600FT, direct to ASPEN, to A6R12, to KUJYU at or above 11000FT, to PIGOK at or above FL200.

RWY16L : Climb on HDG 157° at or above 600FT, direct to BEAMS, to A6L21, to AA631, to AA632, to ACURE, to PAGOT at or above FL160, to PIGOK at or above FL200.

RWY34L : Climb on HDG 337° at or above 600FT, direct to ARIES at or above 4000FT, to A4L11, to A4L12 at or below 7000FT, to A4L13, to A4L14, to ROONY at or above 13000FT, to IBURA, to ADRIA, to ROSSO, to PIGOK at or above FL200.

RWY34R : Climb on HDG 337° at or above 600FT, direct to BOXER, to A4R21, to A4R22, to A4R23, to PEGAS, to GULID, to ROSSO at or above 11000FT, to PIGOK at or above FL200.

RWY16R *MUST be used for database coding.

Serial Number	Path Descriptor*	Waypoint Identifier	Fly Over	Course °M(°T)	Magnetic Variation	Distance (NM)	Turn Direction	Altitude (FT)	Speed (KIAS)	Vertical Angle	Navigation Specification
001	VA	-	-	157 (149.6)	-7.5	-	-	+600	-	-	RNAV1
002	DF	ASPEN	Y	-	-7.5	-	-	-	-	-	RNAV1
003	TF	A6R12	-	157 (149.7)	-7.5	10.6	-	-	-	-	RNAV1
004	TF	KUJYU	-	247 (239.5)	-7.5	9.2	-	+11000	-	-	RNAV1
005	TF	PIGOK	-	273 (265.3)	-7.5	25.7	-	+FL200	-	-	RNAV1

RWY16L *MUST be used for database coding.

Serial Number	Path Descriptor*	Waypoint Identifier	Fly Over	Course °M(°T)	Magnetic Variation	Distance (NM)	Turn Direction	Altitude (FT)	Speed (KIAS)	Vertical Angle	Navigation Specification
001	VA	-	-	157 (149.6)	-7.5	-	-	+600	-	-	RNAV1
002	DF	BEAMS	Y	-	-7.5	-	-	-	-	-	RNAV1
003	TF	A6L21	-	157 (149.7)	-7.5	4.5	-	-	-	-	RNAV1
004	TF	AA631	-	067 (059.5)	-7.5	9.3	-	-	-	-	RNAV1
005	TF	AA632	-	337 (329.8)	-7.5	9.8	-	-	-	-	RNAV1
006	TF	ACURE	-	283 (275.3)	-7.5	8.9	-	-	-	-	RNAV1
007	TF	PAGOT	-	232 (224.1)	-7.5	6.9	-	+FL160	-	-	RNAV1
008	TF	PIGOK	-	232 (224.0)	-7.5	30.2	-	+FL200	-	-	RNAV1

CHANGE : ALT Restriction on A4R23. PROC renamed.

STANDARD DEPARTURE CHART -INSTRUMENT

RJAA / NARITA INTL

RNAV SID

RWY34L *MUST be used for database coding.

Serial Number	Path Descriptor*	Waypoint Identifier	Fly Over	Course °M(°T)	Magnetic Variation	Distance (NM)	Turn Direction	Altitude (FT)	Speed (KIAS)	Vertical Angle	Navigation Specification
001	VA	-	-	337 (329.6)	-7.5	-	-	+600	-	-	RNAV1
002	DF	ARIES	Y	-	-7.5	-	-	+4000	-	-	RNAV1
003	TF	A4L11	-	337 (329.5)	-7.5	3.6	-	-	-	-	RNAV1
004	TF	A4L12	-	052 (044.3)	-7.5	4.6	-	-7000	-	-	RNAV1
005	TF	A4L13	-	097 (089.4)	-7.5	7.5	-	-	-	-	RNAV1
006	TF	A4L14	-	129 (121.2)	-7.5	5.8	-	-	-	-	RNAV1
007	TF	ROONY	-	141 (133.2)	-7.5	9.3	-	+13000	-	-	RNAV1
008	TF	IBURA	-	198 (190.0)	-7.5	11.3	-	-	-	-	RNAV1
009	TF	ADRIA	-	197 (189.9)	-7.5	11.4	-	-	-	-	RNAV1
010	TF	ROSSO	-	257 (249.8)	-7.5	10.0	-	-	-	-	RNAV1
011	TF	PIGOK	-	257 (249.6)	-7.5	24.5	-	+FL200	-	-	RNAV1

RWY34R *MUST be used for database coding.

Serial Number	Path Descriptor*	Waypoint Identifier	Fly Over	Course °M(°T)	Magnetic Variation	Distance (NM)	Turn Direction	Altitude (FT)	Speed (KIAS)	Vertical Angle	Navigation Specification
001	VA	-	-	337 (329.6)	-7.5	-	-	+600	-	-	RNAV1
002	DF	BOXER	Y	-	-7.5	-	-	-	-	-	RNAV1
003	TF	A4R21	-	337 (329.6)	-7.5	3.8	-	-	-	-	RNAV1
004	TF	A4R22	-	067 (059.3)	-7.5	4.1	-	-	-	-	RNAV1
005	TF	A4R23	-	112 (104.6)	-7.5	3.7	-	-	-	-	RNAV1
006	TF	PEGAS	-	141 (133.4)	-7.5	7.6	-	-	-	-	RNAV1
007	TF	GULID	-	204 (196.9)	-7.5	12.6	-	-	-	-	RNAV1
008	TF	ROSSO	-	204 (196.9)	-7.5	12.4	-	+11000	-	-	RNAV1
009	TF	PIGOK	-	257 (249.6)	-7.5	24.5	-	+FL200	-	-	RNAV1

CHANGE : ALT Restriction on A4R23.

STANDARD DEPARTURE CHART -INSTRUMENT

RJAA / NARITA INTL

RNAV SID

Waypoint Coordinates

Waypoint Identifier	Coordinates	Waypoint Identifier	Coordinates
A4L11	355915.6N / 1401249.1E	ARIES	355607.4N / 1401505.9E
A4L12	360232.6N / 1401646.8E	ASPEN	353451.0N / 1403028.1E
A4L13	360236.7N / 1402559.7E	BEAMS	353533.0N / 1403153.1E
A4L14	355937.8N / 1403205.0E	BOXER	355213.0N / 1401951.6E
A4R21	355529.4N / 1401729.2E	GULID	353921.3N / 1402830.3E
A4R22	355734.5N / 1402150.1E	IBURA	354212.1N / 1403759.5E
A4R23	355638.8N / 1402614.7E	KUJYU	352104.0N / 1402719.8E
A6L21	353137.9N / 1403441.9E	PAGOT	354039.6N / 1402139.4E
A6R12	352543.5N / 1403700.7E	PEGAS	355126.3N / 1403302.1E
AA631	353619.9N / 1404431.9E	PIGOK	351854.3N / 1395555.6E
AA632	354446.7N / 1403828.9E	ROONY	355317.4N / 1404024.4E
ACURE	354535.6N / 1402732.3E	ROSSO	352729.0N / 1402404.4E
ADRIA	353056.8N / 1403534.3E		

CHANGE : New PROC