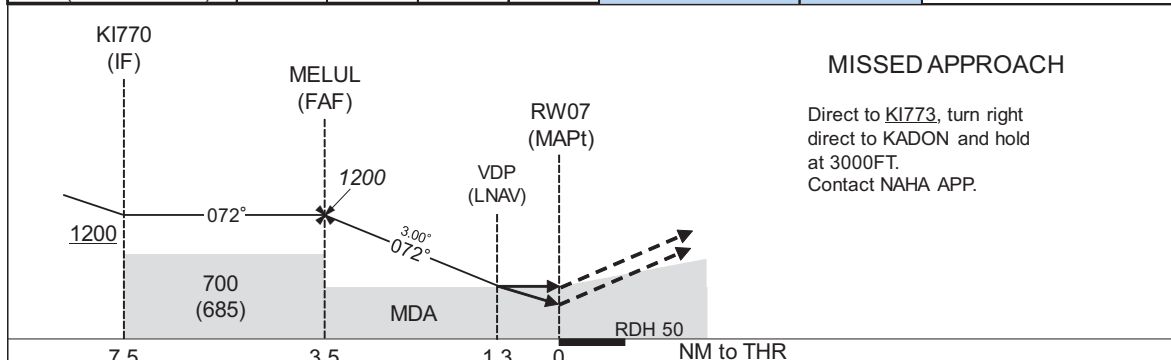
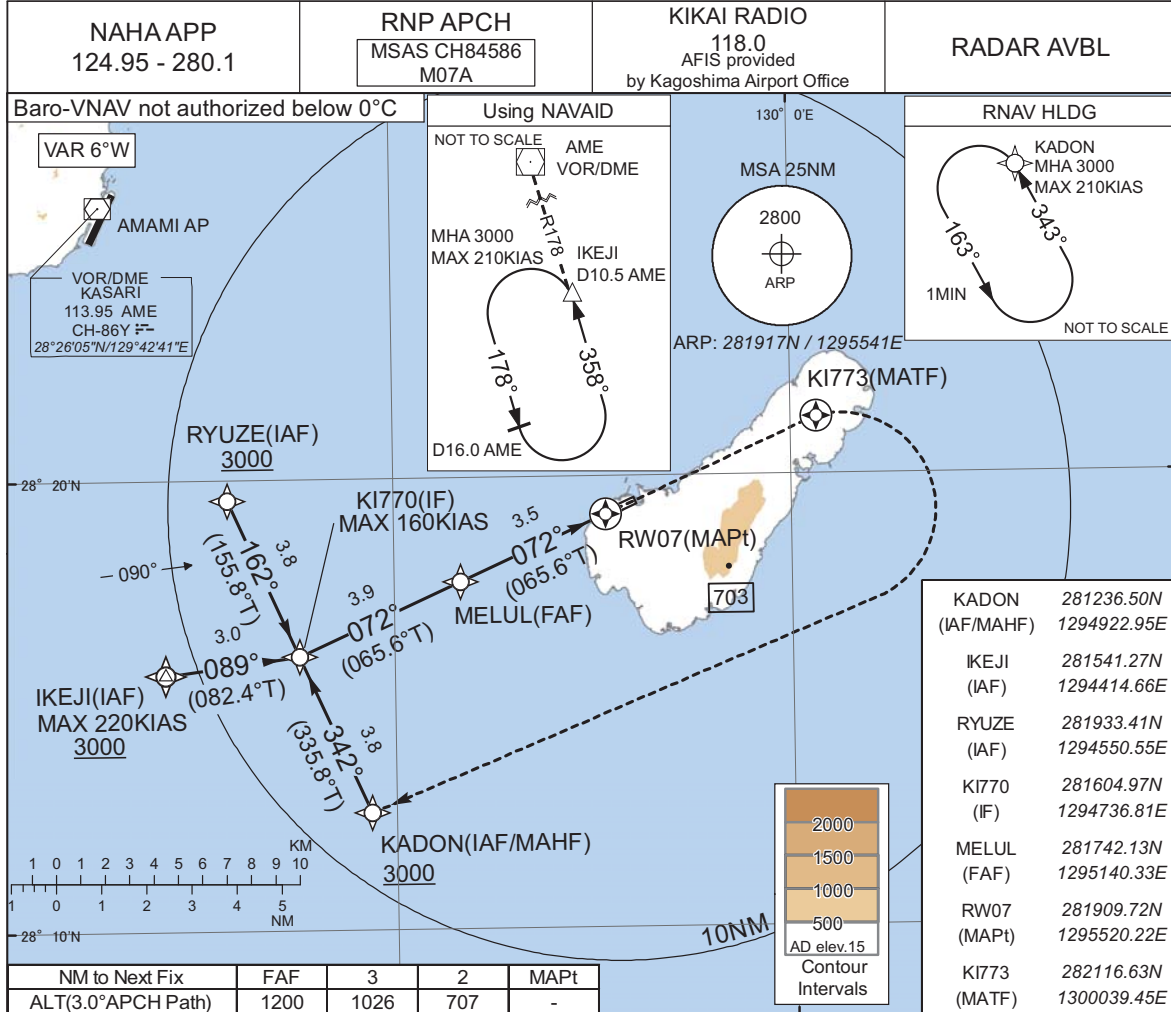


INSTRUMENT APPROACH CHART

RJKI / KIKAI

RNP RWY07



Missed APCH climb gradient MNM 5.0%

MINIMA THR elev. 21 AD elev. 15

CAT	LPV		LNAV/VNAV		LNAV		CIRCLING	
	DA(H)	CMV	DA(H)	CMV	MDA(H)	CMV	MDA(H)	VIS
A	296(275)	1500	348(327)	1500	450(435)	1500	460(445)	1600
B	306(285)						500(485)	
C	315(294)	1600		1800		1800	660(645)	2400
D	-	-	-	-	-	-	-	-

MINIMA with Missed APCH climb gradient of 2.5% are not established.
Circling to NORTH side of RWY only.

CHANGE : MELUL, RW07 established. ARATI, KI772 abolished. MSAS CH added. MNM temperature for Baro-VNAV. MAX speed at KI770. ALT(3.0°APCH Path). Missed APCH climb gradient MNM. NM to THR. MINIMA.

INSTRUMENT APPROACH CHART

RJKI / KIKAI

RNP RWY07

FAS DATA BLOCK

Operation type	0	LTP/FTP ellipsoidal height	+00334
SBAS service provider identifier	2	FPAP latitude	281932.2905N
Airport identifier	RJKI	FPAP longitude	1295617.0375E
Runway	07	Threshold crossing height	00015.0
Approach performance designator	0	TCH units selector	1
Route indicator		Glide path angle	03.00
Reference path data selector	0	Course width at threshold	105.00
Reference path ID	M07A	∠ length offset	0496
LTP/FTP latitude	281909.7150N	HAL	40.0
LTP/FTP longitude	1295520.2855E	VAL	50.0
CRC remainder	2634AFC8		

Required additional data

LTP/FTP orthometric height	6.2
----------------------------	-----

CHANGE : FAS DATA BLOCK, Required additional data established.