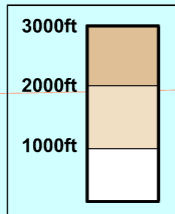
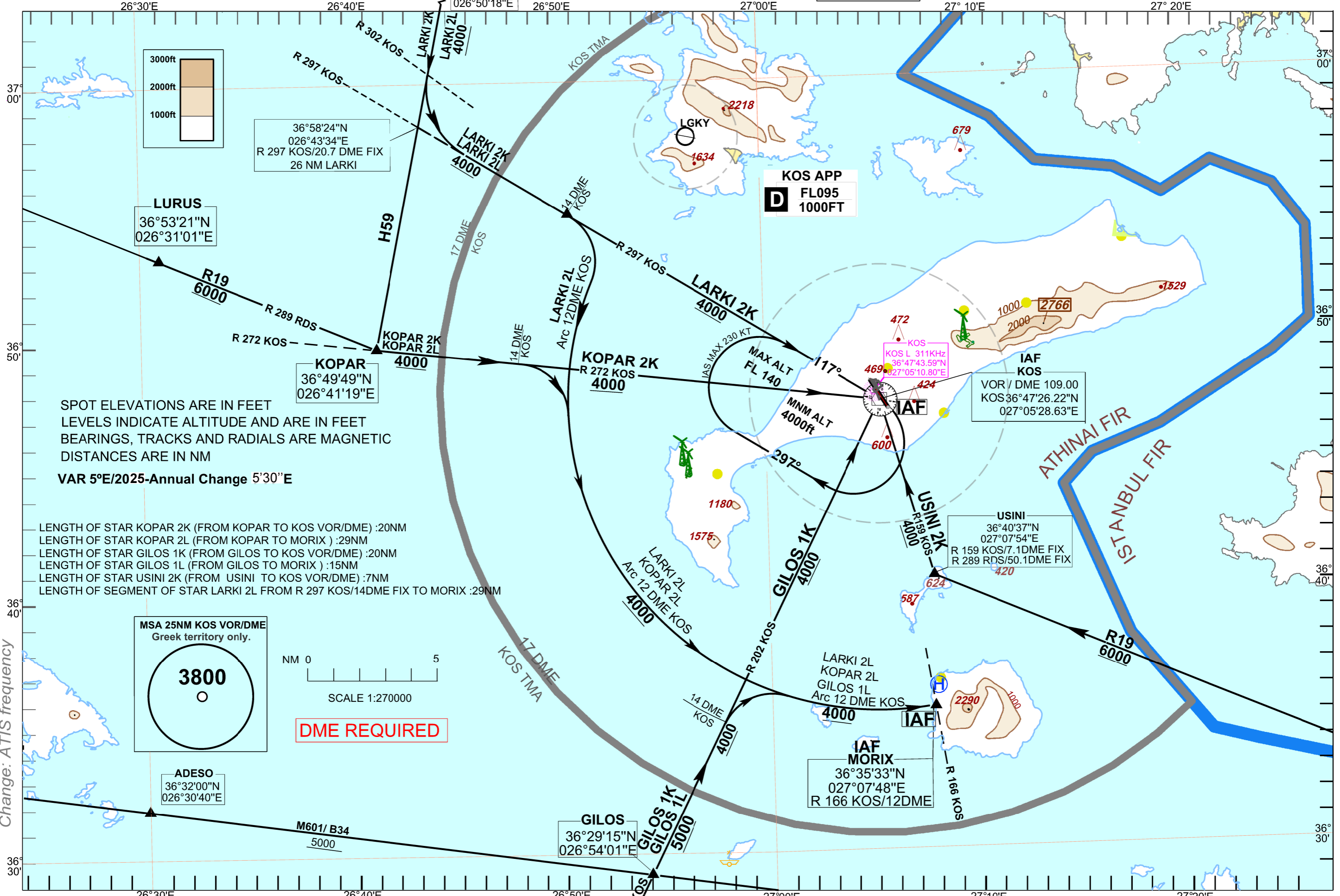


APP 119.950
TWR 121.050
ATIS 126.955

LARKI 2K, LARKI 2L, KOPAR 2K, KOPAR 2L, GILOS 1K, GILOS 1L, USINI 2K

TRANSITION ALTITUDE 5000ft



36°58'24"N
026°43'34"E
R 297 KOS/20.7 DME FIX
26 NM LARKI

LURUS
36°53'21"N
026°31'01"E

KOPAR
36°49'49"N
026°41'19"E

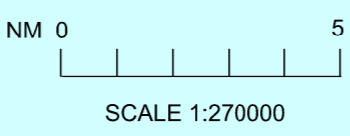
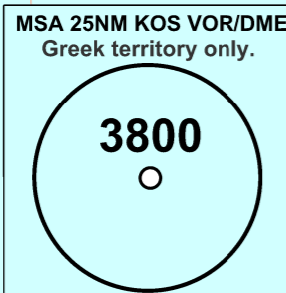
KOS APP
D FL095
1000FT

IAF KOS
VOR / DME 109.00
KOS 36°47'26.22"N
027°05'28.63"E

USINI
36°40'37"N
027°07'54"E
R 159 KOS/7.1DME FIX
R 289 RDS/50.1DME FIX

IAF MORIX
36°35'33"N
027°07'48"E
R 166 KOS/12DME

GILOS
36°29'15"N
026°54'01"E



DME REQUIRED

ADESO
36°32'00"N
026°30'40"E

M601/ B34
5000

Change: ATIS frequency