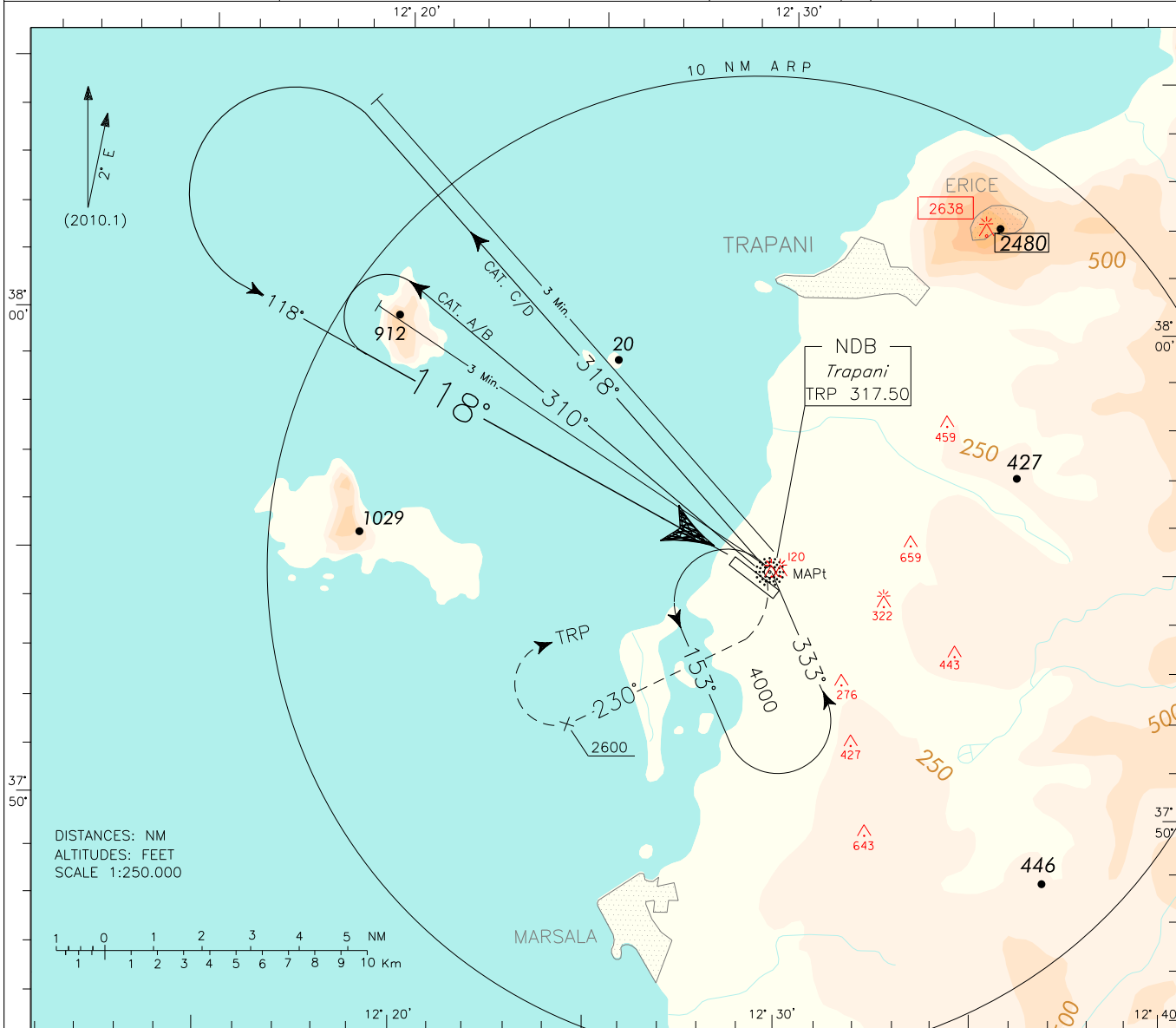


ICAO - INSTRUMENT APPROACH CHART

REMARK: Inbound track is off-set 8° from RWY bearing 126°.	APP Trapani APP/Radar	119.950	122.805	AD ELEV	L I C T	TRAPANI/ BIRGI
	TWR Trapani TWR	119.730	122.100	26		

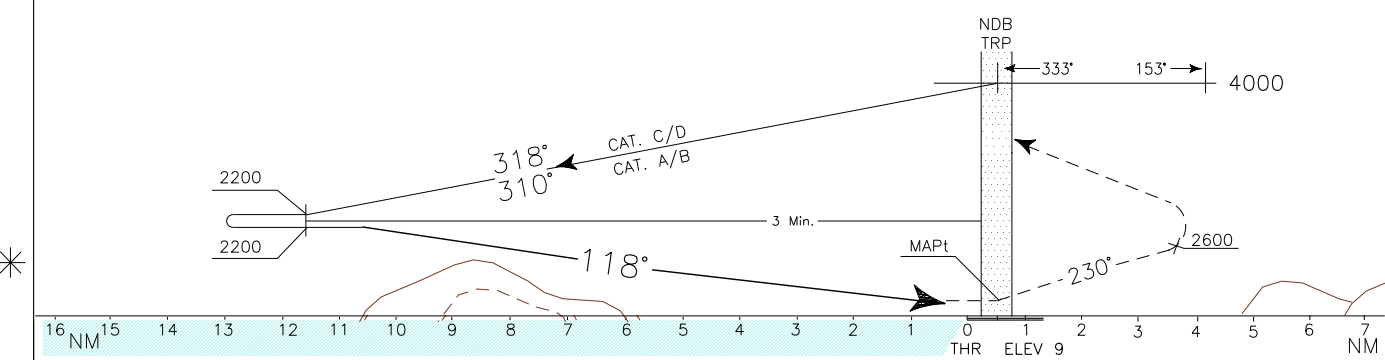
DOC.8168-ED.3-1986

CHANGE: AD ELEVATION UPDATED



TRANSITION ALT 5000

MISSED APPROACH: Over TRP NDB turn right TR 230° climbing to 4000 ft. Leaving 2600 ft turn right bound to TRP NDB to be reached at 4000 ft. IAS MAX 250 kt.



OCA (OCH)	A	B	C	D	REMARK: For category A and B ACFT circling approach is available only.	MNM SECT ALT NDB TRP	
STRAIGHT IN APPROACH	NDB	REMARK	REMARK	1430 (1420)			
CIRCLING				1430 (1410)			

Edited by AM - CIGA