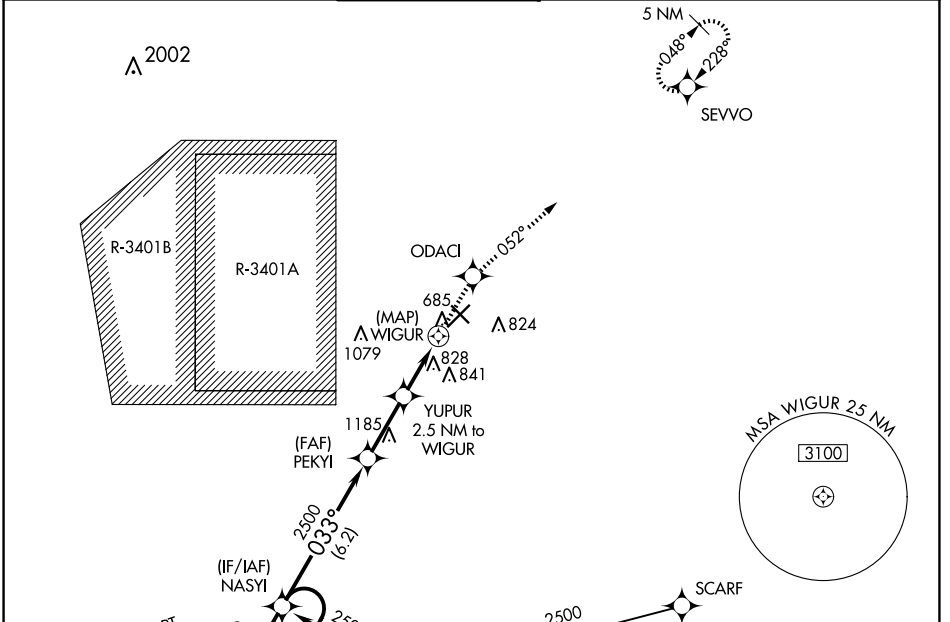


| | |
|------------------------|------------------------|
| APP CRS 033° | Rwy Idg 6401 |
| | TDZE 653 |
| | Apt Elev 656 |

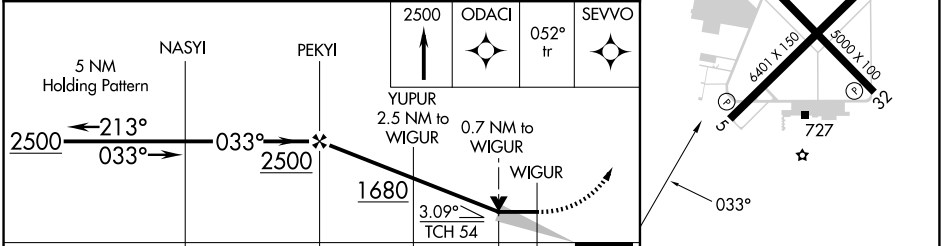
RNAV (GPS) RWY 5

COLUMBUS MUNI (BAK)

| | | | |
|---|---|--|--|
| RNP APCH. | | MISSED APPROACH: Climb to 2500 direct ODACI and on 052° track to SEVVO and hold. | |
| ▼ If local altimeter setting not received, use Indianapolis Intl altimeter setting and increase all MDAs 100 feet. VDP NA when using Indianapolis Intl altimeter setting. | | | |
| AWOS-3 119.75 | INDIANAPOLIS APP CON 134.85 317.8 | COLUMBUS TOWER ★ 118.6 (CTAF) 0 | GND CON 121.6 |
| | | | CLNC DEL 134.85 (When twr closed) |
| | | | UNICOM 122.95 |



| | | | |
|------|-----|------|-----|
| ELEV | 656 | TDZE | 653 |
|------|-----|------|-----|



| CATEGORY | A | B | C | D |
|-----------|--------|-------------|-------------------------|-------------------------|
| LNNAV MDA | 1080-1 | 427 (500-1) | 1080-1½ 427 (500-1¼) | 1080-1½ 427 (500-1½) |

EC-2, 20 MAR 2025 to 17 APR 2025

EC-2, 20 MAR 2025 to 17 APR 2025