

LOC/DME I-HYA <b>109.15</b>	APP CRS <b>246°</b>	Rwy Idg 5425	TDZE 43
Chan <b>28 (Y)</b>		Apt Elev 54	

# ILS or LOC RWY 24

CAPE COD GATEWAY (HYA)

RADAR required.

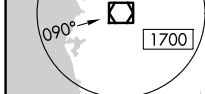
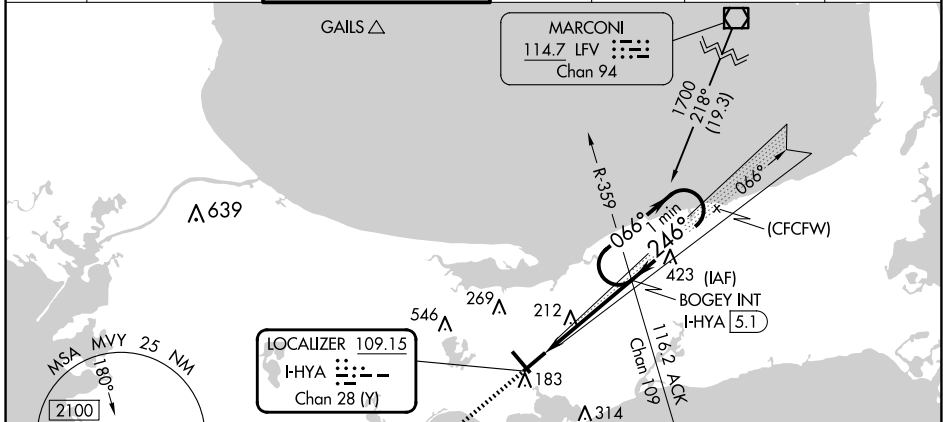
**▼** When local altimeter setting not received, use Chatham altimeter setting and increase all DA to 325 feet and increase all MDA 40 feet, increase S-LOC 24 Cats C/D visibility to RVR 6000 and increase Circling Cats C/D visibility ¼ SM. Inop table does not apply to S-ILS 24 all Cats and S-LOC 24 Cats A/B. For inop ALS, increase S-LOC 24 Cats C/D visibility to 1¼ SM. For inop ALS, when using Chatham altimeter setting, increase S-LOC 24 Cats C/D visibility to 1½ SM. Straight-in/Circling Rwy 24 at night, operational VGSI required, remain on or above VGSI glidepath until threshold.

**▲** Rwy 24 helicopter visibility reduction below RVR 5000 NA.

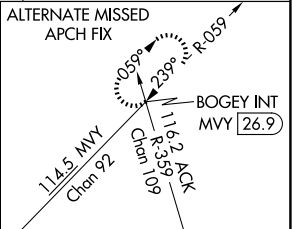


**MALSF**  
MISSED APPROACH:  
Climb to 700 then climbing left turn to 1700 on heading 045° and on ACK VOR/DME R-359 to BOGEY INT/I-HYA 5.1 DME and hold.

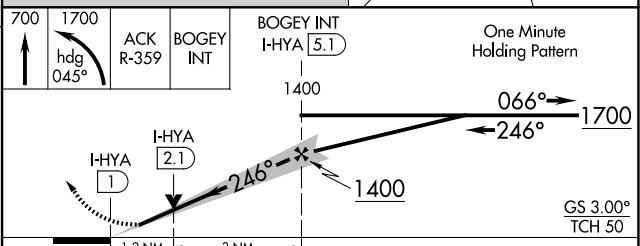
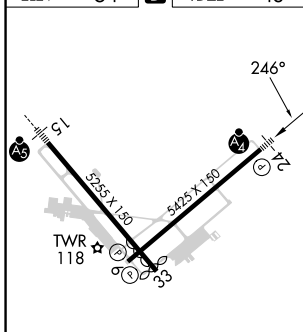
ATIS <b>123.8</b>	BOSTON APP CON <b>118.2 284.6</b>	HYANNIS TOWER * <b>119.5 (CTAF) 0 257.8</b>	GND CON <b>118.45</b>	CLNC DEL <b>125.15</b>	CLNC DEL <b>120.125</b> (When twr closed)	UNICOM <b>122.95</b>
----------------------	--------------------------------------	--	--------------------------	---------------------------	---	-------------------------



**LOCALIZER 109.15**  
I-HYA  
Chan 28 (Y)



ELEV 54	<b>D</b>	TDZE 43
---------	----------	---------



CATEGORY	A	B	C	D
S-ILS 24		293/50	250 (300-1)	
S-LOC 24		480/50	437 (500-1)	
<b>C</b> CIRCLING	560-1 506 (600-1)	580-1 526 (600-1)	860-2¼ 806 (900-2¼)	860-2½ 806 (900-2½)

NE-1, 20 MAR 2025 to 17 APR 2025

NE-1, 20 MAR 2025 to 17 APR 2025