

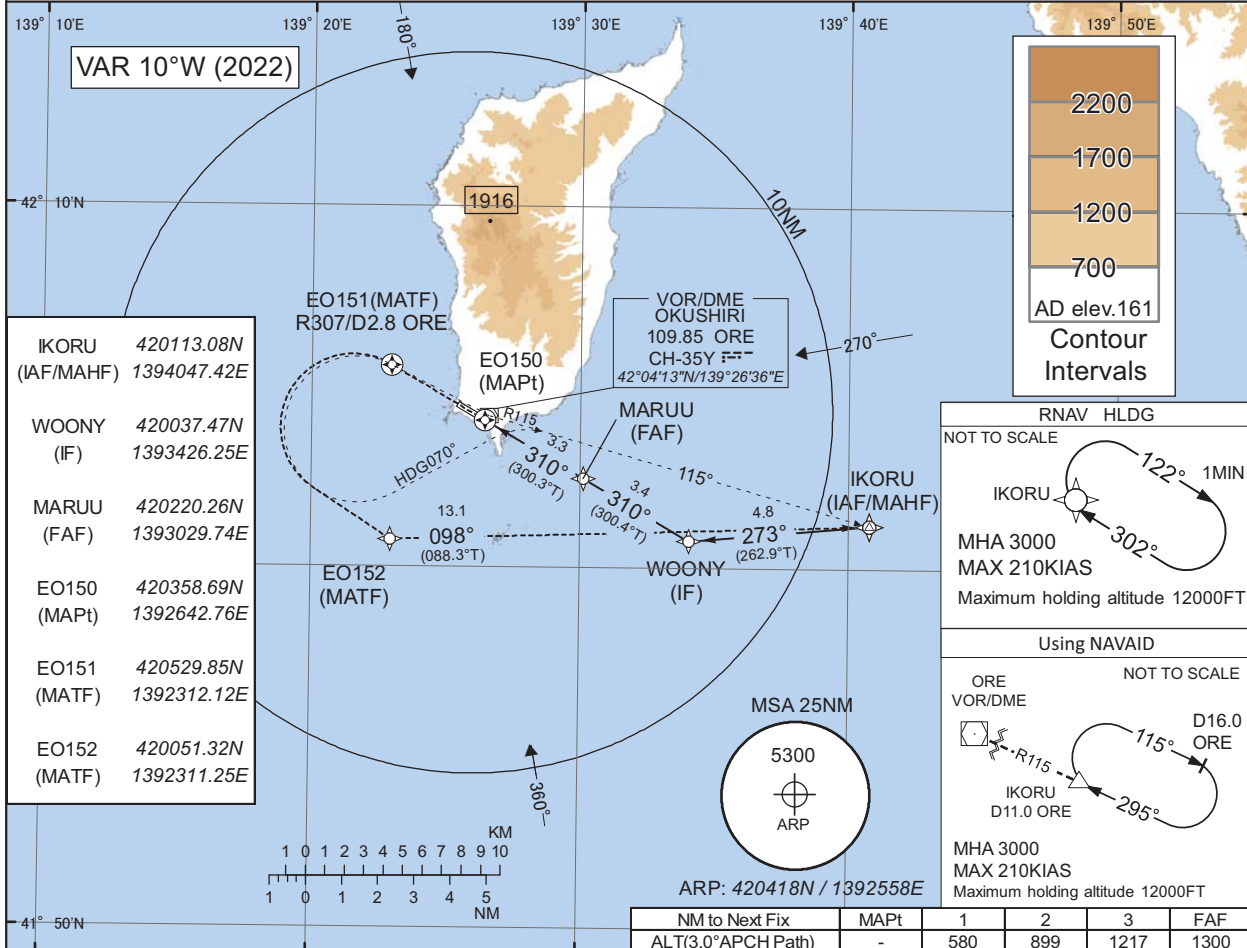
INSTRUMENT APPROACH CHART

RJEO / OKUSHIRI

RNP RWY31

<b>TOKYO CONTROL</b> 119.3 - 276.5 134.25 - 260.4	<b>RNP APCH</b> MSAS CH62166 M31A	<b>OKUSHIRI RADIO</b> 122.7 AFIS provided by New Chitose Airport Office	<b>NO RADAR</b>
---------------------------------------------------------	-----------------------------------------	----------------------------------------------------------------------------------	-----------------

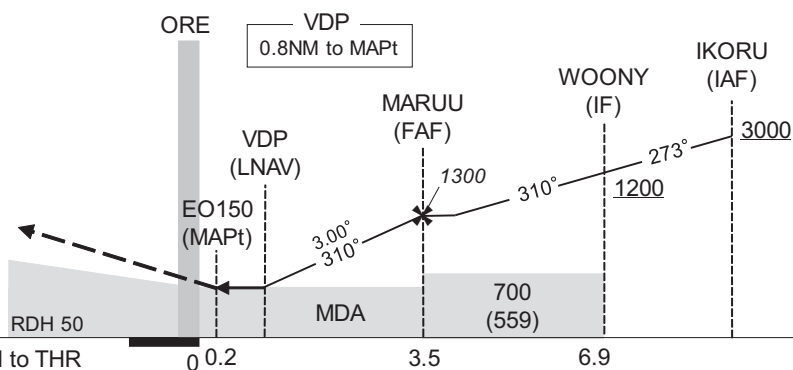
Baro-VNAV not authorized below -15°C



MISSED APPROACH

Direct to EO151, turn left direct to EO152, to IKORU and hold at 3000FT. Contact OKUSHIRI RADIO.

(For using VOR/DME)  
Climb via ORE R307 to ORE 2.8DME, turn left HDG070° to intercept and proceed via ORE R115 to IKORU and hold at 3000FT. Contact OKUSHIRI RADIO.



CAT	LPV		LNAV/VNAV		LNAV		CIRCLING	
	DA(H)	CMV	DA(H)	CMV	MDA(H)	CMV	MDA(H)	VIS
A	428(287)	1500	490(349)	1500	490(349)	1500	600(439)	1600
B	438(297)						620(459)	
C	447(306)	1800	-	1800	-	1800	-	2400
D	-	-	-	-	-	-	-	-

Circling to SOUTH side of RWY only.

CHANGE : ATC call sign.

INSTRUMENT APPROACH CHART

RJEO / OKUSHIRI

RNP RWY31

**FAS DATA BLOCK**

Operation type	0	LTP/FTP ellipsoidal height	+00760
SBAS service provider identifier	2	FPAP Latitude	420433.0405N
Airport identifier	RJEO	FPAP Longitude	1392523.3970E
Runway	31	Threshold Crossing Height	00015.0
Approach performance designator	0	TCH units selector	1
Route indicator		Glide path angle	03.00
Reference path data selector	0	Course width at threshold	105.00
Reference path ID	M31A	∠ length offset	0192
LTP/FTP latitude	420405.4465N	HAL	40.0
LTP/FTP longitude	1392627.1545E	VAL	50.0
CRC remainder	D0B5F768		

**Required additional data**

LTP/FTP orthometric height	42.8
----------------------------	------

CHANGE : Description of FAS DATA BLOCK ITEM(CRC remainder).