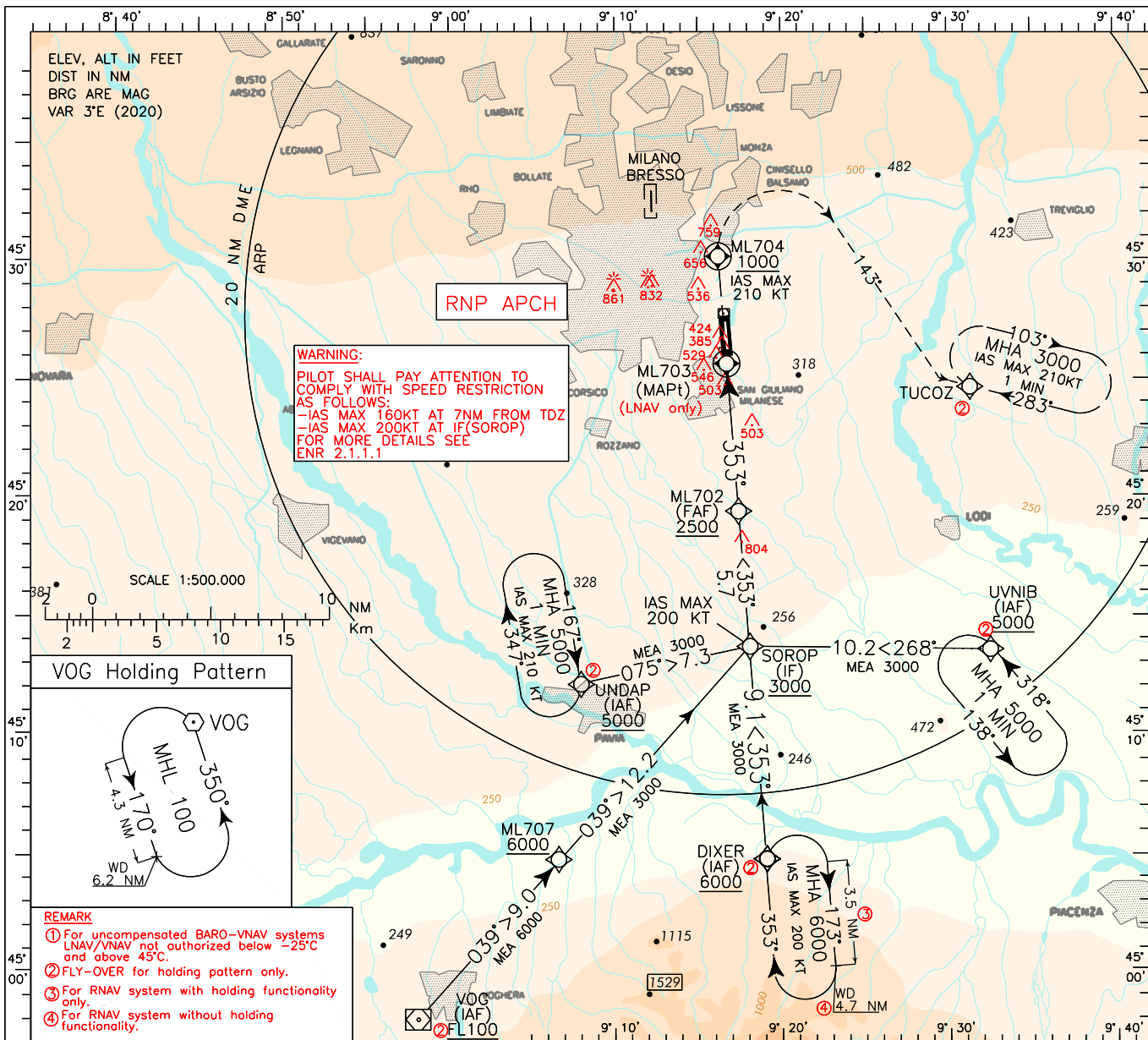


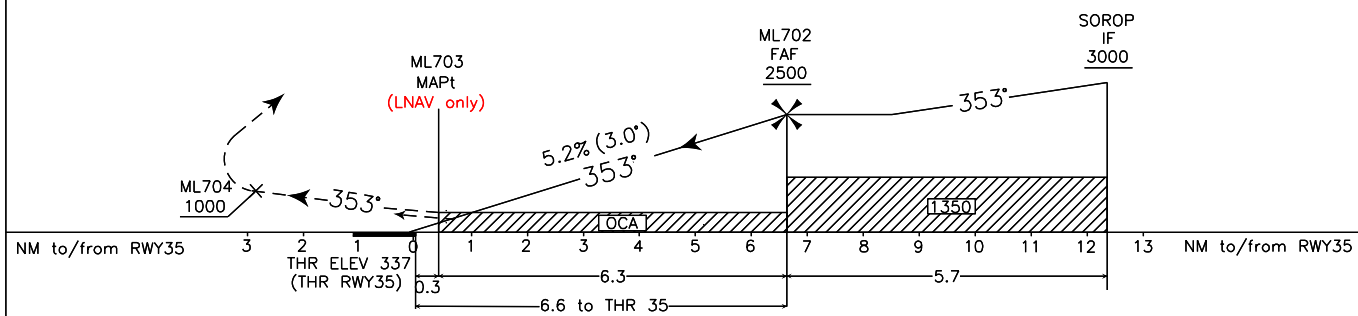
INSTRUMENT APPROACH CHART - ICAO E35A EGNOS AERODROME ELEV APP Milano Radar CH 133.180 MILANO/Linate (LIML)
 APPROACH CH 52839 353 TWR Linate TWR 118.100 (118.400) RNP RWY35
 ATIS Linate Terminal Information 136.375

DOC.8168-ED.7 2020
 CHANGE: CIRCLING CAT A/B OCA/OCH UPDATED.



REMARK
 ① For uncompensated BARO-VNAV systems LNAV/VNAV not authorized below -25°C and above 45°C.
 ② FLY-OVER for holding pattern only.
 ③ For RNAV system with holding functionality only.
 ④ For RNAV system without holding functionality.

TRANSITION ALT 6000
 TCH 15M
 VPA 3.0°
MISSED APPROACH:
 Climbing to 3000 Ft continue on course 353° to ML704, to be reached at or above 1000 ft, then turn right (IAS MAX 210kt) on track 143° and proceed on course 103° to TUCOZ. Hold as published.



STRAIGHT IN APPROACH	OCA (OCH)				CIRCLING SECTORS	Timing is not permitted	FT PER MIN			MNM SECT ALT ARP
	A	B	C	D			GS	DIST ML703	ALT (HGT)	
LPV	650(313)	660(323)	670(333)	680(343)			80	425	6	2410 (2073)
LNAV/VNAV	730(393)	742(405)	750(413)	760(423)			100	530	5	2090 (1753)
LNAV	800 (463)						120	635	4	1780 (1443)
CIRCLING (EAST OF RWY)	920 (567)		1200 (847)				140	740	3	1460 (1123)
					160		850	2	1140 (803)	
					180	955	1	820 (483)		