

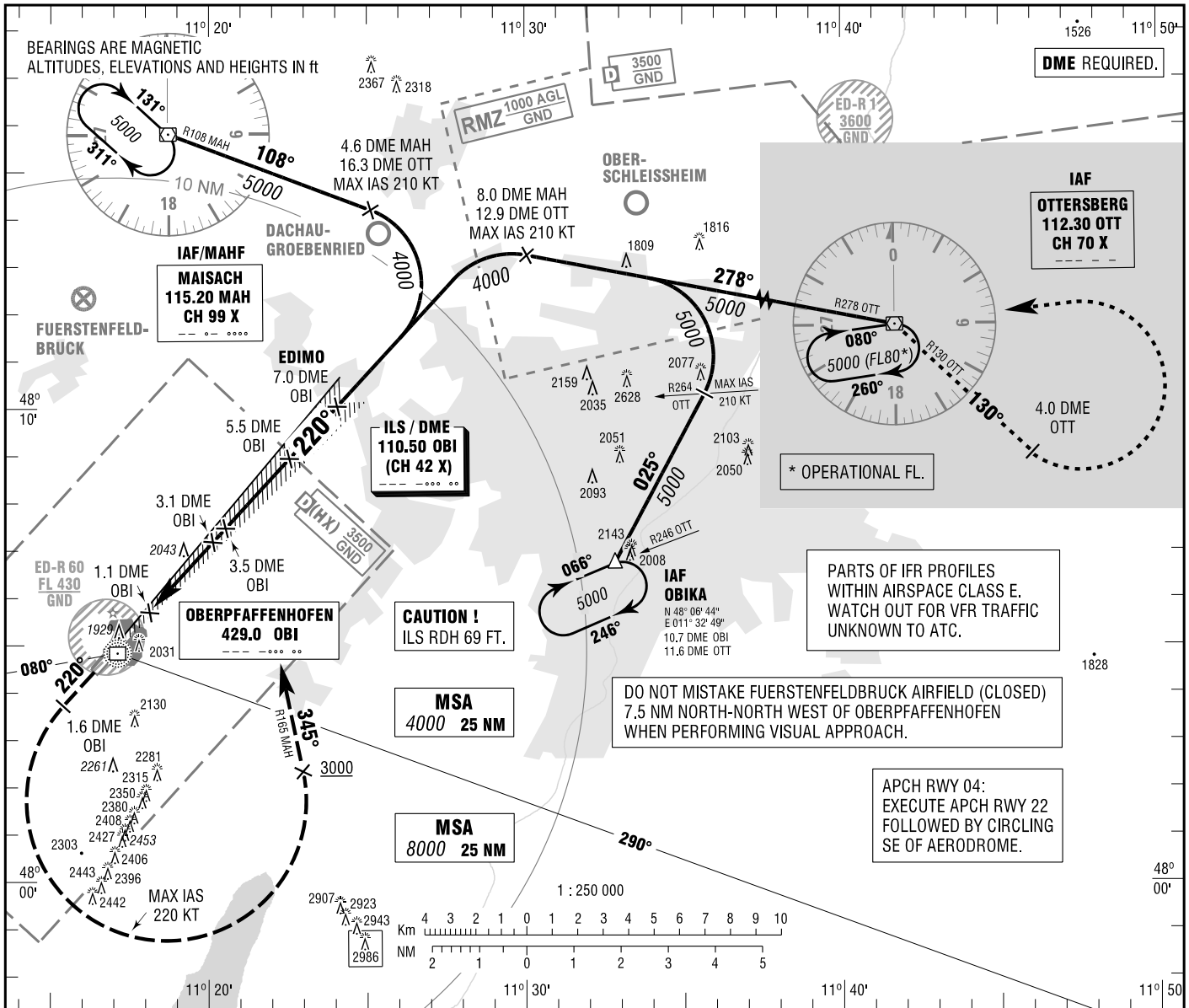
**INSTRUMENT
APPROACH
CHART - ICAO**

VAR 3° E

ELEV 1947
OCH RELATED TO
THR 22 ELEV 1890

OBERPFAFFENHOFEN ATIS	126.580
MUENCHEN RADAR	127.955 (S)
MUENCHEN ARRIVAL	120.780 (S)
OBERPFAFFENHOFEN TOWER	119.555

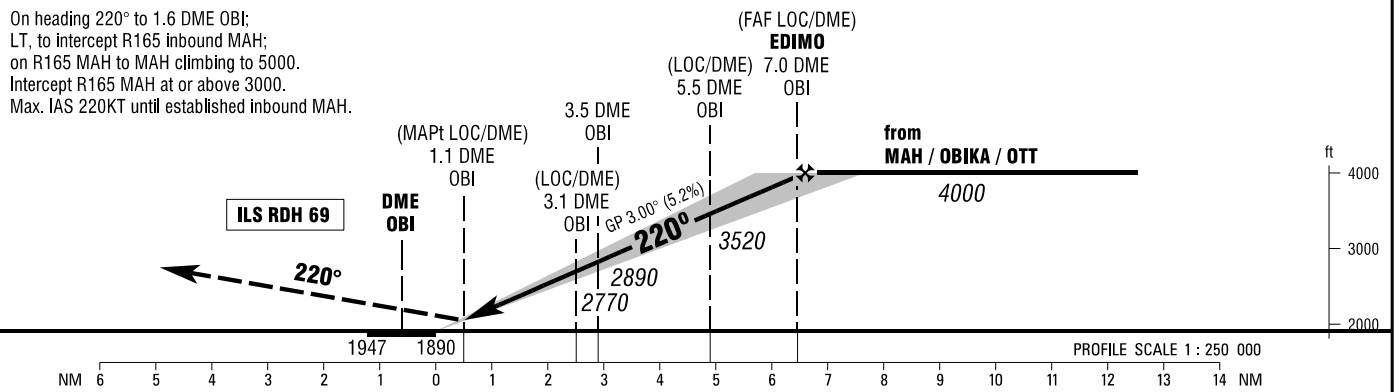
OBERPFAFFENHOFEN
ILS or LOC
RWY 22



Correction: Communications, obstacles & OCA(H) obstacles & highest obstacle revised.

MISSED APPROACH PROCEDURE

On heading 220° to 1.6 DME OBI;
LT, to intercept R165 inbound MAH;
on R165 MAH to MAH climbing to 5000.
Intercept R165 MAH at or above 3000.
Max. IAS 220KT until established inbound MAH.



OCA (OCH)	A	B	C	D
ILS/DME CAT I	2061 (171)	2070 (180)	2080 (190)	2090 (200)
LOC/DME	2290 (400)	2290 (400)	2290 (400)	2290 (400)
CIRCLING* OCH RELATED TO AD ELEV	2490 (550)	2560 (610)	2850 (900)	2850 (900)

DME OBI	2	3	4	5	6
DIST THR	1.4	2.4	3.4	4.4	5.4
ALTITUDE	2410	2730	3050	3360	3680

LOC-DME: Timing not authorized for defining the MAPt.

GS	kt	80	100	120	140	160	180
EDIMO-THR (6.4 NM)	MIN:SEC	4:48	3:50	3:12	2:45	2:24	2:08
Rate of descent (5.2%)	ft / MIN	420	530	630	740	840	950

*SOUTH-EAST OF AERODROME ONLY. NOTE: MNM GROUND VISIBILITY REQUIRED 1000m.