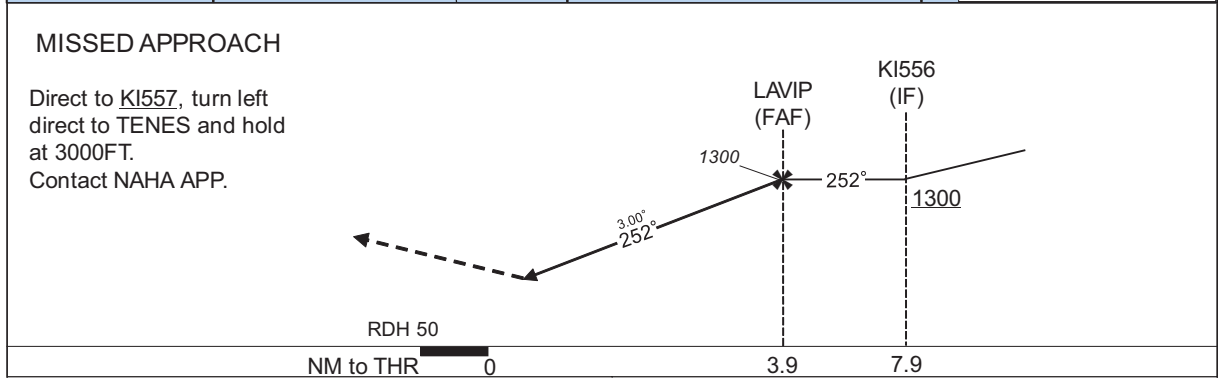
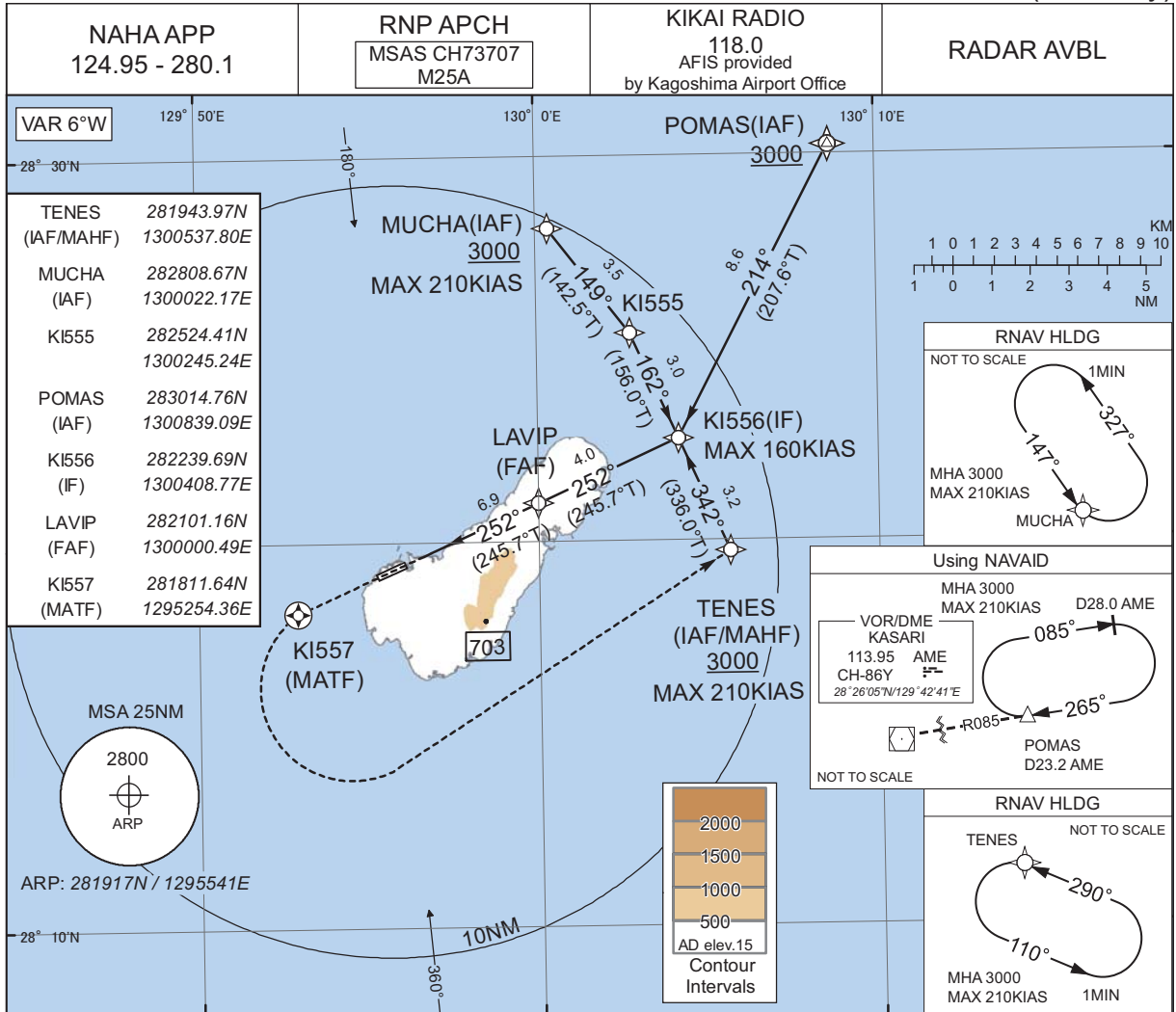


INSTRUMENT APPROACH CHART

RJKI / KIKAI

RNP Y RWY25(LPV only)



CHANGE : New PROC.

CAT	THR elev. 18		AD elev. 15	
	DA(H)	CMV	MDA(H)	VIS
A	269(251)	1500	460(445)	1600
B	279(261)		500(485)	
C	289(271)	1600	660(645)	2400
D	-	-	-	-

Circling to NORTH side of RWY only.

INSTRUMENT APPROACH CHART

RJKI / KIKAI

RNP Y RWY25(LPV only)

**FAS DATA BLOCK**

Operation type	0	LTP/FTP ellipsoidal height	+00325
SBAS service provider identifier	2	FPAP latitude	281903.1220N
Airport identifier	RJKI	FPAP longitude	1295503.7170E
Runway	25	Threshold crossing height	00015.0
Approach performance designator	0	TCH units selector	1
Route indicator	Y	Glide path angle	03.00
Reference path data selector	0	Course width at threshold	105.00
Reference path ID	M25A	∠ length offset	0496
LTP/FTP latitude	281925.7000N	HAL	40.0
LTP/FTP longitude	1295600.4670E	VAL	50.0
CRC remainder	06DA9E79		

**Required additional data**

LTP/FTP orthometric height	5.3
----------------------------	-----

CHANGE : New PROC.