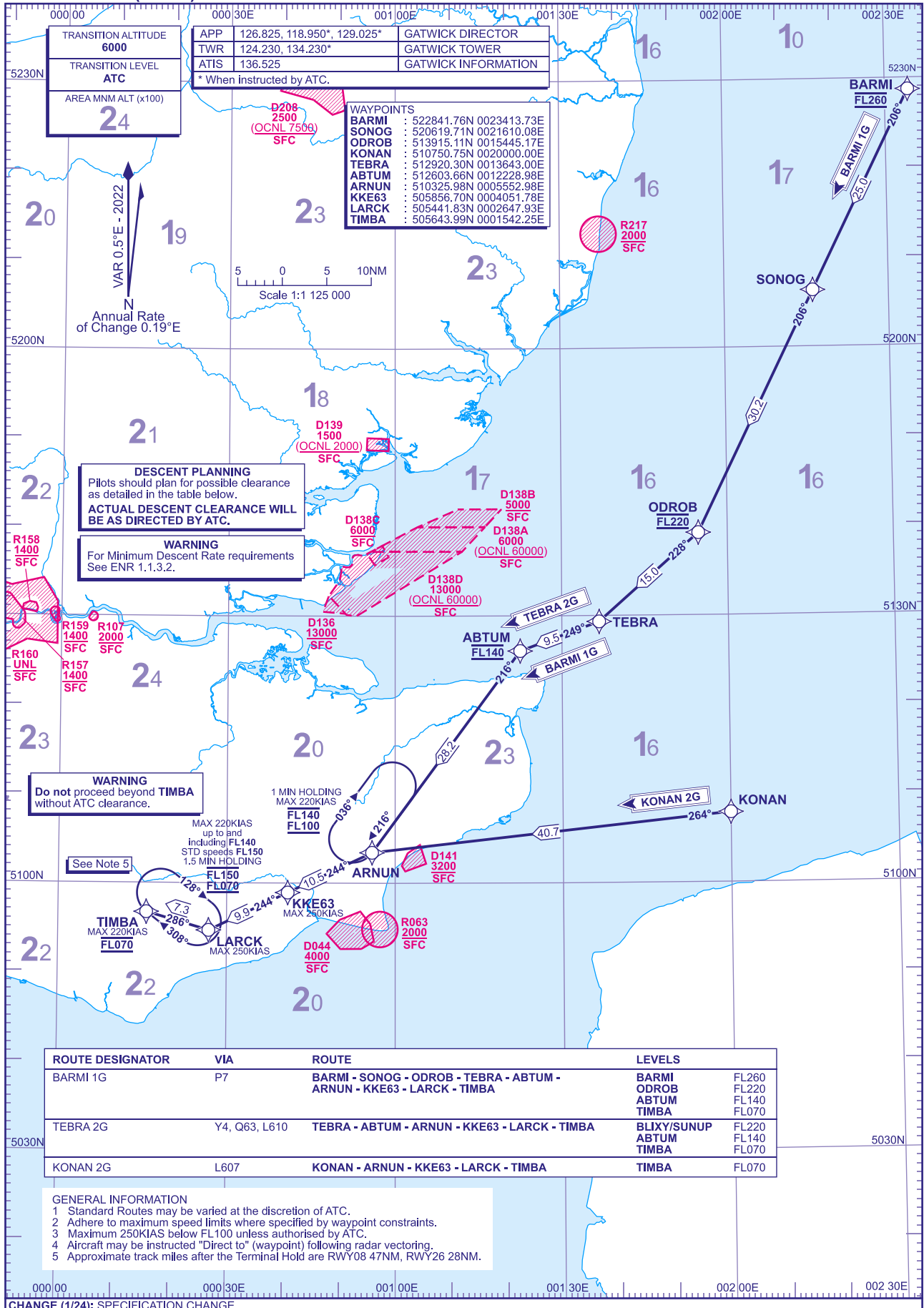


**RNAV5 (DME or DME or GNSS)  
STANDARD ARRIVAL CHART -  
INSTRUMENT (STAR) - ICAO**

DISTANCES IN NAUTICAL MILES  
TRACKS ARE MAGNETIC  
ALTITUDES AND ELEVATIONS ARE IN FEET

**LONDON GATWICK  
BARM1 1G TEBRA 2G KONAN 2G**



TRANSITION ALTITUDE  
**6000**

TRANSITION LEVEL  
**ATC**

AREA MNM ALT (x100)  
**24**

APP	126.825, 118.950*, 129.025*	GATWICK DIRECTOR
TWR	124.230, 134.230*	GATWICK TOWER
ATIS	136.525	GATWICK INFORMATION

\* When instructed by ATC.

**WAYPOINTS**

BARM1 : 522841.76N 0023413.73E  
SONOG : 520619.71N 0021610.08E  
ODROB : 513915.11N 0015445.17E  
KONAN : 510750.75N 0020000.00E  
TEBRA : 512920.30N 0013643.00E  
ABTUM : 512603.66N 0012228.98E  
ARNUN : 510325.98N 0005552.98E  
KKE63 : 505856.70N 0004051.78E  
LARCK : 505441.83N 0002647.93E  
TIMBA : 505643.99N 0001542.25E

VAR 0.5°E - 2022

Annual Rate of Change 0.19°E

Scale 1:125 000

**DESCENT PLANNING**  
Pilots should plan for possible clearance as detailed in the table below.  
**ACTUAL DESCENT CLEARANCE WILL BE AS DIRECTED BY ATC.**

**WARNING**  
For Minimum Descent Rate requirements See ENR 1.1.3.2.

**WARNING**  
Do not proceed beyond TIMBA without ATC clearance.

ROUTE DESIGNATOR	VIA	ROUTE	LEVELS
BARM1 1G	P7	BARM1 - SONOG - ODROB - TEBRA - ABTUM - ARNUN - KKE63 - LARCK - TIMBA	BARM1 FL260 ODROB FL220 ABTUM FL140 TIMBA FL070
TEBRA 2G	Y4, Q63, L610	TEBRA - ABTUM - ARNUN - KKE63 - LARCK - TIMBA	BLIXY/SUNUP FL220 ABTUM FL140 TIMBA FL070
KONAN 2G	L607	KONAN - ARNUN - KKE63 - LARCK - TIMBA	TIMBA FL070

**GENERAL INFORMATION**

- Standard Routes may be varied at the discretion of ATC.
- Adhere to maximum speed limits where specified by waypoint constraints.
- Maximum 250KIAS below FL100 unless authorised by ATC.
- Aircraft may be instructed "Direct to" (waypoint) following radar vectoring.
- Approximate track miles after the Terminal Hold are RWY08 47NM, RWY26 28NM.