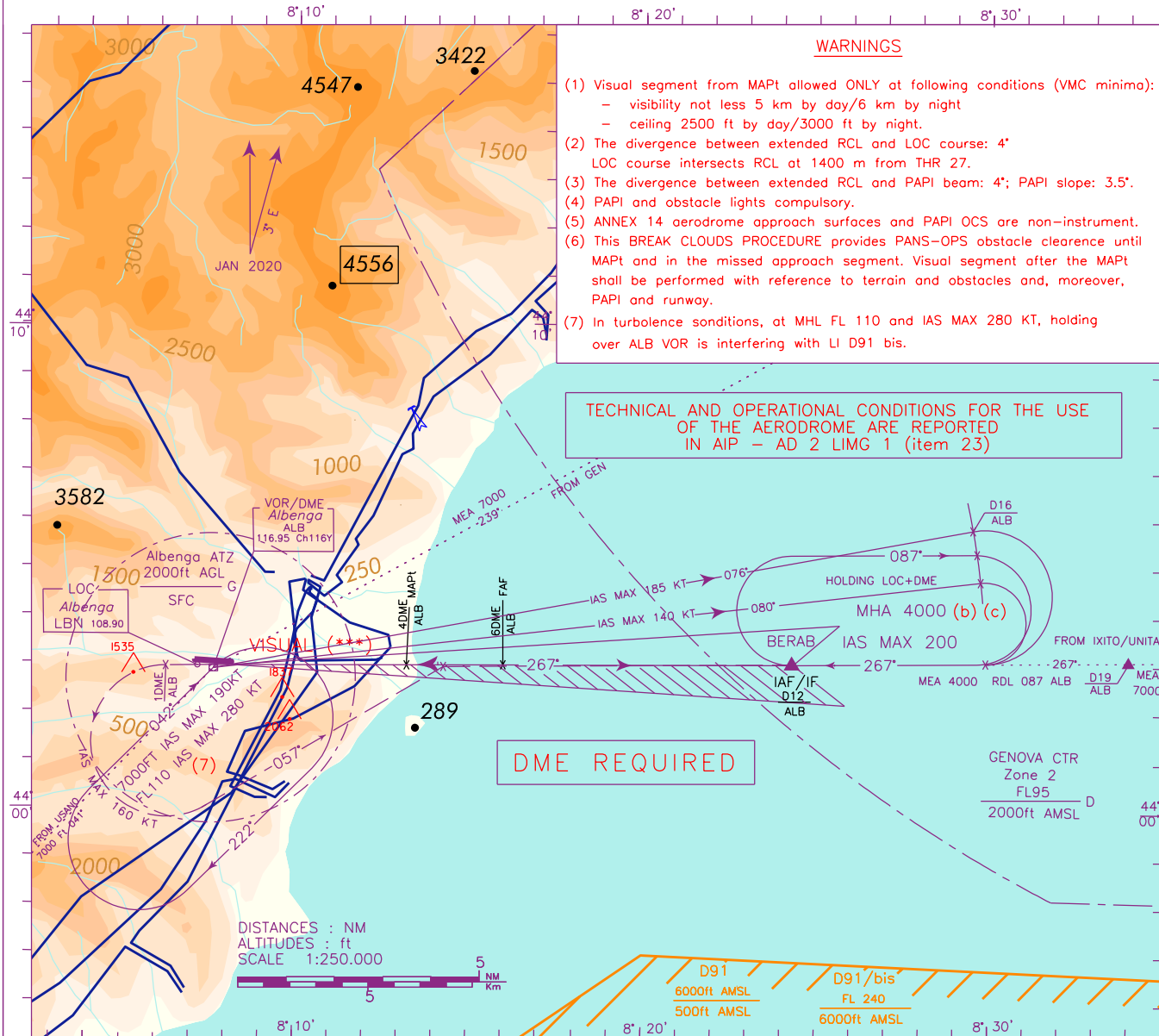


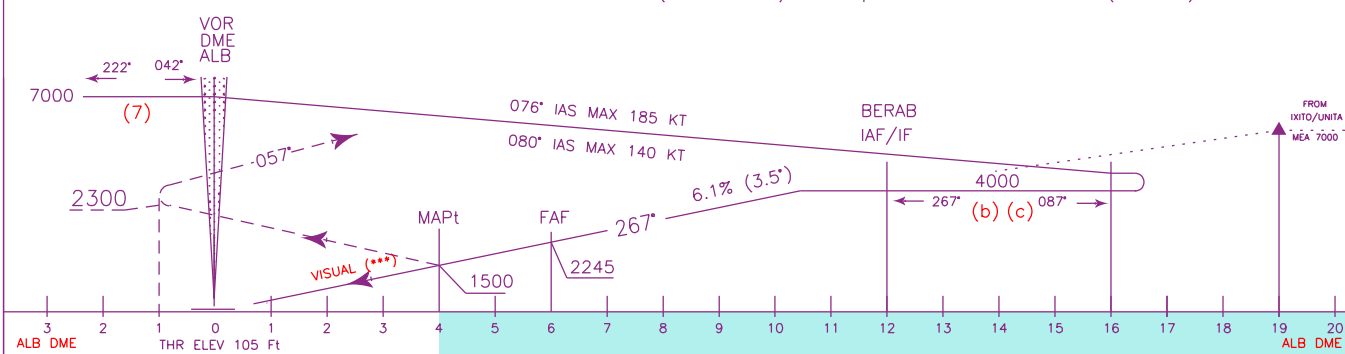
BREAK CLOUDS FOR VFR APPROACH RWY 27

| | | | |
|---|--|-------------|--|
| REMARKS (a) Procedure in partially outside controlled airspace (b) MAX holding altitude 6000 ft when LD91 and/or LD91 bis are active (c) Holding at 7000 ft or above available only ATC discretion. | FIS Milano Information 128.925 | AD ELEV 149 | L T M G ALBENGA/RIVIERA AIRPORT LOC RWY 27 CAT A-B-C |
| | APP Genova APP/Radar 119.600 (119.850) | | |
| | AFIS Albenga Aerodrome Info 123.850 | | |



CHANGE: REPRINTING

TRANSITION ALT 7000 MISSED APPROACH: Proceed on track 267° climbing to 4000 ft. At 1 NM after ALB DME, to be reached at 2300 ft or above, turn left on track 057° (IAS MAX 160 kt) to intercept and follow RDL 087° ALB VOR (track 087°) to BERAB.



| STRAIGHT IN APPROACH | | OCA(OCH) | A | B | C | TIMING NOT ALLOWED FOR DEFINING MAPt | | | | MNM SECT ALT | | | | |
|----------------------|-----|------------------------|-------------|--------------------------|-------------|---|--------|------------|--------------------------|-----------------------------|---------|-----------|-------------|-----|
| LOC | DME | M.A. CLIMB GRADIENT 5% | 1500 (1395) | | | (*) TRAFFIC CIRCUIT FOR RWY 09 ALLOWED ONLY DURING DAYLIGHT AND NORTH OF THE FIELD AT MINIMUM ALTITUDE OF 1850 FT (**) FOR VISUAL SEGMENT SEE ALSO ALBENGA VISUAL AIDS CHART | GS | FT PER MIN | FAF-MAPt 2 NM (*) TIMING | MAPt-THR 3.63 NM (*) TIMING | DME ALB | ALT (HGT) | ALB | VOR |
| | | | | M.A. CLIMB GRADIENT 2.5% | 1800 (1695) | | | 80 | 495 | 1 : 30 | 2 : 43 | 6 | 2245 (2140) | |
| CIRCLING | | NOT ALLOWED (**) | | | 100 | 619 | 1 : 12 | 2 : 11 | 5 | 1875 (1770) | | | | |
| | | | | | 120 | 743 | 1 : 00 | 1 : 49 | 4 | 1500 (1395) | | | | |
| | | | | | 140 | 866 | 0 : 51 | 1 : 33 | 3 | 1125 (1020) | | | | |
| | | | | | 160 | 990 | 0 : 45 | 1 : 22 | 2 | 750 (645) | | | | |