

ATC Surveillance Minimum Altitude Chart-ICAO

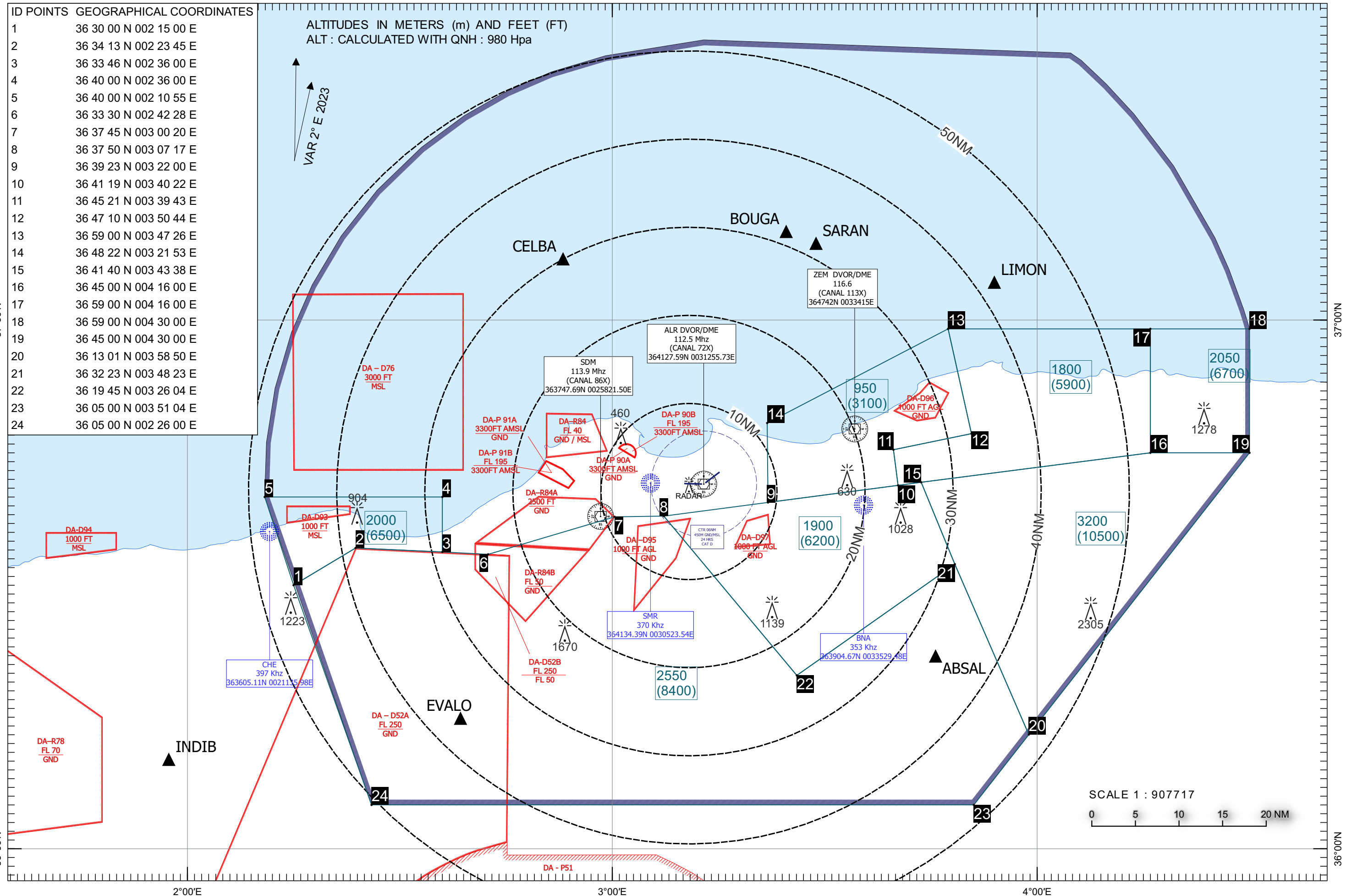
AD ELEV : 25M
TRANSITION ALTITUDE : 1200M

ID POINTS	GEOGRAPHICAL COORDINATES
1	36 30 00 N 002 15 00 E
2	36 34 13 N 002 23 45 E
3	36 33 46 N 002 36 00 E
4	36 40 00 N 002 36 00 E
5	36 40 00 N 002 10 55 E
6	36 33 30 N 002 42 28 E
7	36 37 45 N 003 00 20 E
8	36 37 50 N 003 07 17 E
9	36 39 23 N 003 22 00 E
10	36 41 19 N 003 40 22 E
11	36 45 21 N 003 39 43 E
12	36 47 10 N 003 50 44 E
13	36 59 00 N 003 47 26 E
14	36 48 22 N 003 21 53 E
15	36 41 40 N 003 43 38 E
16	36 45 00 N 004 16 00 E
17	36 59 00 N 004 16 00 E
18	36 59 00 N 004 30 00 E
19	36 45 00 N 004 30 00 E
20	36 13 01 N 003 58 50 E
21	36 32 23 N 003 48 23 E
22	36 19 45 N 003 26 04 E
23	36 05 00 N 003 51 04 E
24	36 05 00 N 002 26 00 E

ALTITUDES IN METERS (m) AND FEET (FT)
ALT : CALCULATED WITH QNH : 980 Hpa

VAR 2° E 2023

CHANGES: Modification of coordinates for zone DA-R84B.
Modification of coordinates for zones DA-D52A and DA-D52B.



SCALE 1 : 907717
0 5 10 15 20 NM