

1/1 AEROPARQUE JORGE NEWBERY (SABE) ILS Z RWY 13

Seq Num	Fix Ident	Coordinates	Path Terminator	Fly Over	Distance (NM)	Course M°(T°)	Turn	Alt / Descr (ft/FL)	Speed Limit (Kt)	Navigation Specification	RNP
10	VANAR	S 34°19'28.00" W 058°45'44.00"	IF	N	N/A	N/A	N/A	+FL50	N/A	RNAV 1 or RNP 1	1.0
20	BE176	S 34°26'09.87" W 058°37'24.20"	TF	N	9.6	143 (134.2)	N/A	+3000	N/A	RNAV 1 or RNP 1	1.0
30	MUPER	S 34°27'33.49" W 058°35'39.95"	TF	N	2.0	143 (134.1)	N/A	@3000	N/A	RNAV 1 or RNP 1	1.0
10	MUPER	S 34°27'33.49" W 058°35'39.95"	IF	N	N/A	N/A	N/A	@3000	N/A	N/A	N/A
20	FAP	S 34°30'21.94" W 058°30'39.05"	CF	Y	5.0	133 (124.0)	N/A	@1700	N/A	N/A	N/A
30	RW13	S 34°33'14.16" W 058°25'30.91"	CF	Y	5.1	133 (124.0)	N/A	@70	N/A	N/A	N/A
40	BE076	S 34°34'42.24" W 058°22'52.99"	CF	Y	2.6	133 (124.0)	N/A	N/A	N/A	RNAV 1 or RNP 1	1.0
50	VERAS	S 34°35'36.56" W 058°10'26.83"	TF	N	10.3	104 (095.1)	N/A	+2200	N/A	RNAV 1 or RNP 1	1.0
60	VERAS	S 34°35'36.56" W 058°10'26.83"	HM	Y	4.0	229 (219.1)	R	+3000	-210	RNAV 1 or RNP 1	1.0

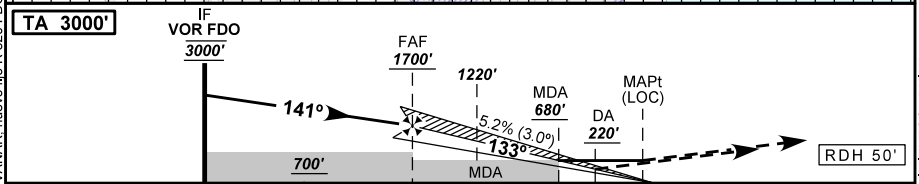
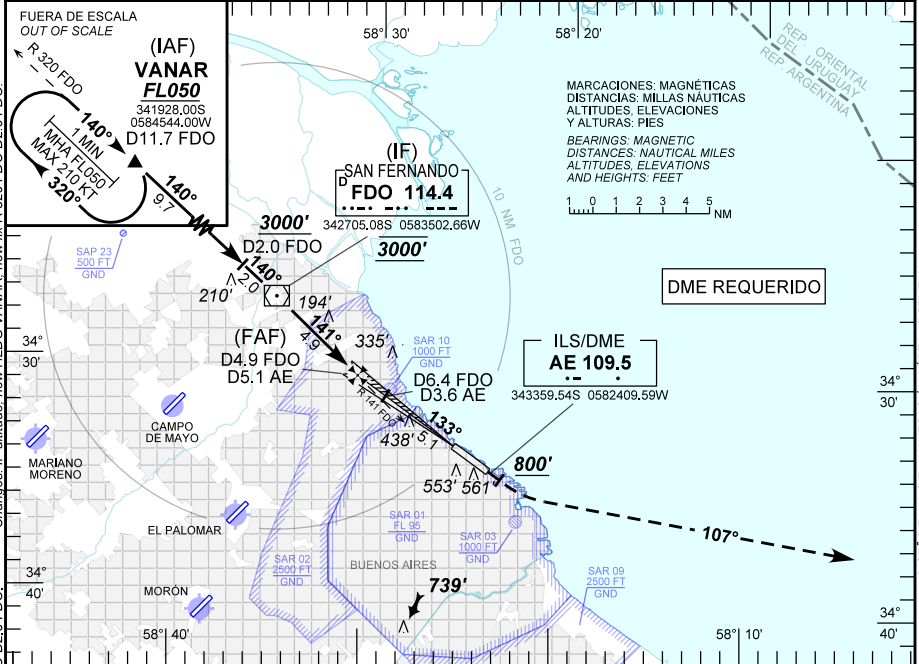
21 ABRIL 2022

AEROPARQUE JORGE NEWBERY (SABE)
BUENOS AIRES

Carta de aproximación por instrumentos
Instrument approach chart

ILS Y RWY 13

ATIS (ES) (EN) 127.60 127.90	AEROPARQUE APP 120.60 119.50	AEROPARQUE TWR 118.85 118.25 128.85	AEROPARQUE GND 121.90	EMERG 121.50
ILS AE 109.5	FINAL APCH CRS 133°	ALTITUD MNM FAF 1700' (1680')	ILS/DME DA (H) 220' (200')	AD Elev 20' THR Elev 20'
Aproximación frustrada: ASC HDG 133° hasta 800 ft. virar a la izquierda HDG 107° hasta 3000 ft y seguir instrucciones del ATC. Mised approach: Climb HDG 133° until 800 ft, turn left HDG 107° until 3000 ft and proceed as directed by ATC.				09° W (2020) 3000'
NOTA: Circulación visual solo Este de RWY 13/31.		NOTE: Circle to land only East to RWY 13/31.		MSA 25 NM FDO



TO THR 13 (NM)	10.0	5.1	3.6	1.9	0.5	0.0
TO GP (DME)	10.0	5.1	3.6	1.9	0.5	0.0
FROM FDO (DME)	0.0	4.9	6.4	8.1	9.5	10.0

DIRECTA RWY 13 / Straight in RWY 13						Circulación Visual Circle to land			
CAT	ILS/DME		LOC/DME		MDH 660'	CAT	MDA	MDH	VIS
	DA 220'	DH 200'	MDA 680'						
	VIS ALS	VIS SIN ALS	VIS ALS	VIS SIN ALS					
A			2800 M	3200 M		A	680'	660'	3200 M
B	800 M	1200 M				B	680'	660'	3200 M
C	RVR 750 M	RVR 1200 M				C	710'	690'	3700 M
D			3000 M	3400 M		D	730'	710'	4600 M

GS KT	90	110	130	150	160	DIST to MAPt	5.1	4.5	3.6	2.5	1.9
FAF - MAPt 5.1 NM	3:24	2:47	2:21	2:02	1:55	ALT	1700	1500	1220	870	680
FPM	480	580	690	800	850	HGT	(1680)	(1480)	(1200)	(850)	(660)

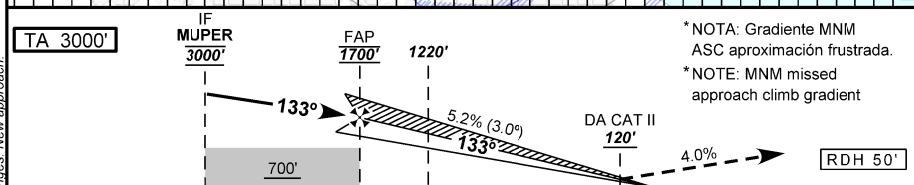
21 ABRIL 2022

AEROPARQUE JORGE NEWBERY (SABE)
BUENOS AIRES

Carta de aproximación por instrumentos
Instrument approach chart

ILS X RWY 13 CAT II

ATIS (ES) (EN) 127.60 127.90	AEROPARQUE APP 120.60 119.50	AEROPARQUE TWR 118.85 118.25 128.85	AEROPARQUE GND 121.90	EMERG 121.50
ILS AE 109.5	FINAL APCH CRS 133°	ALTITUD AT FAP 1700' (1680')	ILS/DME CAT II 4.0% DA (H) 120' (100')	AD Elev 20' THR Elev 20'
Aproximación frustrada: ASC sobre curso 133° hasta BE076, virar a la izquierda hacia VERAS alcanzando MNM 2200 ft y HLDG ascendiendo hasta 3000 ft y seguir instrucciones del ATC. Mised approach: Climb on course 133° to BE076, turn left to VERAS reaching MNM 2200 ft, hold climbing to 3000 ft and proceed as directed by ATC.				09° W (2020) 3000'
NOTA: Se requiere certificación de ACFT y habilitación de tripulación		NOTE: ACFT and aircrew certification required.		MSA 25 NM ARP



TO THR 13 (NM)	10.1	5.1	3.6	0.2	0.0
TO GP (DME)	10.1	5.1	3.6	0.2	0.0
FROM FDO (DME)	0.7	4.9	6.4	9.8	10.0

DIRECTA RWY 13 / Straight in RWY 13				Circulación Visual			
ILS/DME CAT II 4.0% *				Circle to land			
CAT	DA 120'	RA 113'	DH 100'	CAT	MDA	MDH	VIS
A	RVR 300 M			A	Circulación Visual N.A.		
B							
C							
D							
RVR 350 M (RVR 300 M WITH AUTOLAND)				Circle to land N.A.			

1/1 AEROPARQUE JORGE NEWBERY (SABE) ILS X RWY 13 CAT II

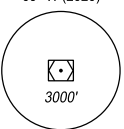
Seq Num	Fix Ident	Coordinates	Path Terminator	Fly Over	Distance (NM)	Course M°(T°)	Turn	Alt / Descr (ft/FL)	Speed Limit (Kt)	Navigation Specification	RNP
10	VANAR	S 34°19'28.00" W 058°45'44.00"	IF	N	N/A	N/A	N/A	+FL50	N/A	RNAV 1 or RNP 1	1.0
20	BE176	S 34°26'09.87" W 058°37'24.20"	TF	N	9.6	143 (134.2)	N/A	+3000	N/A	RNAV 1 or RNP 1	1.0
30	MUPER	S 34°27'33.49" W 058°35'39.95"	TF	N	2.0	143 (134.1)	N/A	@3000	N/A	RNAV 1 or RNP 1	1.0
10	MUPER	S 34°27'33.49" W 058°35'39.95"	IF	N	N/A	N/A	N/A	@3000	N/A	N/A	N/A
20	FAP	S 34°30'21.94" W 058°30'39.05"	CF	Y	5.0	133 (124.1)	N/A	@1700	N/A	N/A	N/A
30	RW13	S 34°33'14.16" W 058°25'30.91"	CF	Y	5.1	133 (124.1)	N/A	@70	N/A	N/A	N/A
40	BE076	S 34°34'42.24" W 058°22'52.99"	CF	Y	2.6	133 (124.0)	N/A	N/A	N/A	RNAV 1 or RNP 1	1.0
50	VERAS	S 34°35'36.56" W 058°10'26.83"	TF	N	10.3	104 (095.1)	N/A	+2200	N/A	RNAV 1 or RNP 1	1.0
60	VERAS	S 34°35'36.56" W 058°10'26.83"	HM	Y	4.0	229 (219.1)	R	+3000	-210	RNAV 1 or RNP 1	1.0

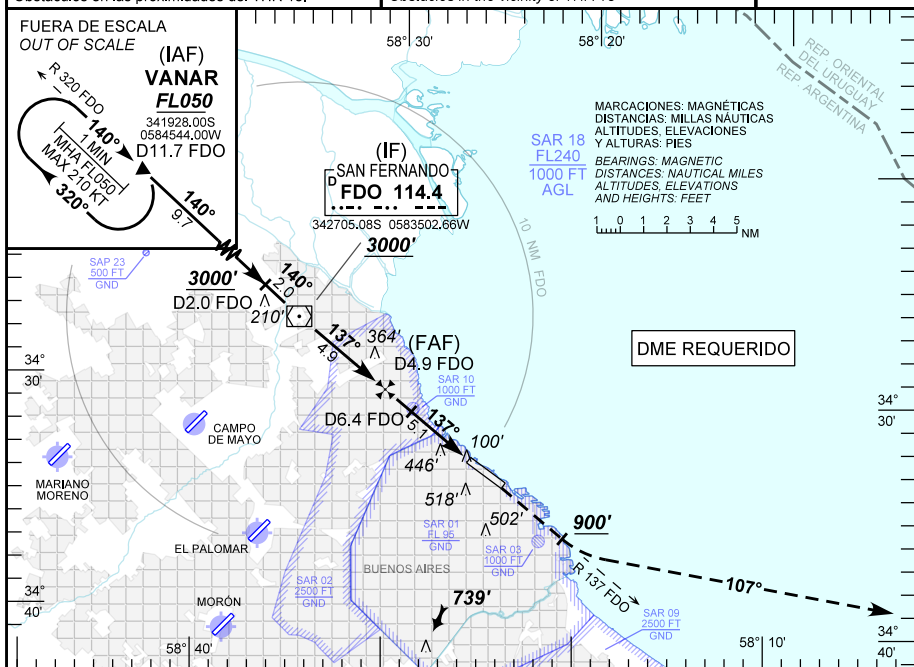
21 ABRIL 2022

AEROPARQUE JORGE NEWBERY (SABE)
BUENOS AIRES

Carta de aproximación por instrumentos
 Instrument approach chart

VOR RWY 13

ATIS (ES) (EN) 127.60 127.90	AEROPARQUE APP 120.60 119.50	AEROPARQUE TWR 118.85 118.25 128.85	AEROPARQUE GND 121.90	EMERG 121.50
VOR FDO 114.4	FINAL APCH CRS 137°	ALTITUD MNM FAF 1700' (1680')	MDA (H) 760' (740')	AD Elev 20' THR Elev 20'
Aproximación frustrada: ASC sobre R 137 FDO hasta 900 ft, virar a la izquierda HDG 107° alcanzando 3000 ft y seguir instrucciones del ATC. Missed approach: Climb on R 137 FDO until 900 ft, turn left HDG 107° reaching 3000 ft and proceed as directed by ATC.				 09° W (2020) MSA 25 NM FDO
NOTA: Circulación visual solo al Este de RWY 13/31. Obstáculos en las proximidades del THR 13.		NOTE: Circle to land only East to RWY 13/31. Obstacles in the vicinity of THR 13		



TO THR 13 (NM)	10.0	5.1	3.6	2.2	0.0
FROM FDO (DME)	0.0	4.9	6.4	7.8	10.0

DIRECTA RWY 13 / Straight in RWY 13						Circulación Visual					
CAT	VOR / DME					Circle to land					
	MDA 760'		MDH 740'			CAT	MDA	MDH	VIS		
A	VIS ALS		VIS SIN ALS			A	760'	740'	3700 M		
B	3200 M		3700 M			B	760'	740'	3700 M		
C	3400 M		3900 M			C	760'	740'	3900 M		
D						D	760'	740'	4600 M		
GS KT	90	110	130	150	160	DIST to MAPt	5.1	4.5	3.6	2.5	2.2
FAF - MAPt 5.1 NM	3:24	2:47	2:21	2:02	1:55	ALT	1700	1500	1220	870	760
FPM	480	590	690	800	850	HGT	(1680)	(1480)	(1200)	(850)	(740)

21 ABRIL 2022

AEROPARQUE JORGE NEWBERY (SABE)
BUENOS AIRES

Carta de aproximación por instrumentos
Instrument approach chart

RNP Z RWY 13

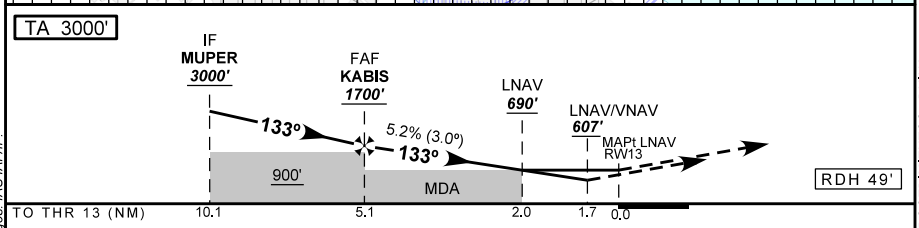
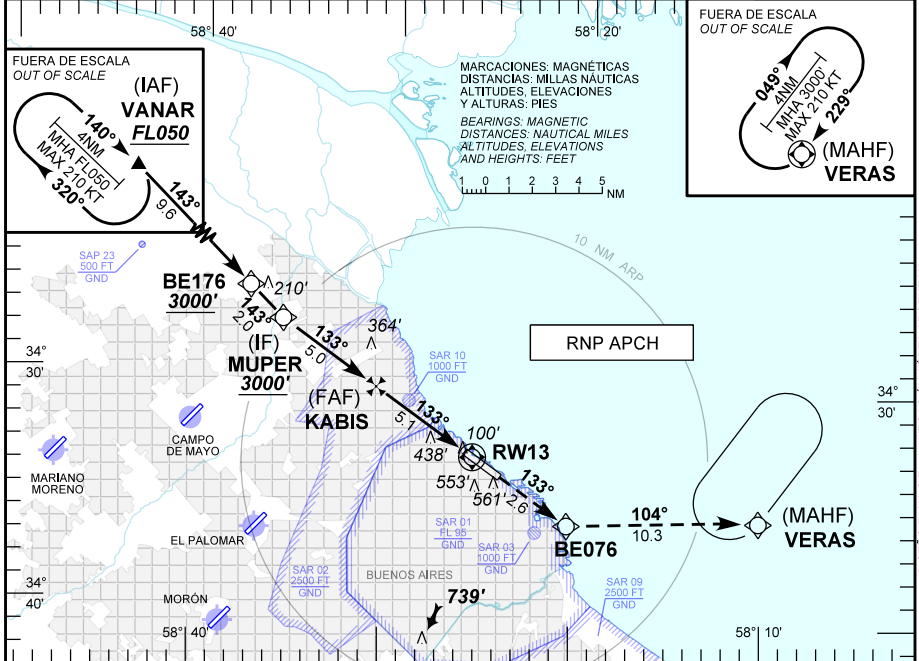
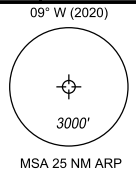
ATIS (ES) (EN) 127.60 127.90	AEROPARQUE APP 120.60 119.50	AEROPARQUE TWR 118.85 118.25 128.85	AEROPARQUE GND 121.90	EMERG 121.50
RNP	FINAL APCH CRS 133°	ALTITUD MNM KABIS 1700' (1680')	LNAV / VNAV DA (H) 607' (587')	AD Elev 20' THR Elev 20'

Aproximación frustrada: ASC sobre curso 133° hasta BE076, virar a la izquierda hacia VERAS alcanzando MNM 2200 ft, HLDG ascendiendo hasta 3000 ft y seguir instrucciones del ATC.

Missed approach: Climb on course 133° to BE076, turn left to VERAS reaching MNM 2200 ft, hold climbing to 3000 ft and proceed as directed by ATC.

NOTA: Para sistemas Baro VNAV no compensados, debajo de -10° C o superior a 50° C N.A. Obstáculos en las proximidades del THR 13.

NOTE: For uncompensated Baro VNAV systems N.A. below -10° C or above 50° C. Obstacles in the vicinity of THR 13.



DIRECTA RWY 13 / Straight in RWY 13						Circulación Visual					
CAT	LNAV / VNAV		LNAV		Circle to land						
	DA 607'	DH 587'	MDA 690'	MDH 670'	CAT	MDA	MDH	VIS			
A	2300 M	2700 M	2900 M	3300 M	A	Circulación Visual N.A.	Circle to land N.A.				
B			3100 M	3500 M	B						
C					C						
D					D						
GS KT	90	110	130	150	160	DIST to MAPt	5.1	4.0	3.6	3.0	2.0
FAF - MAPt 5.1 NM	3:25	2:48	2:22	2:03	1:55	ALT	1700	1340	1220	1020	690
FPM	480	580	690	800	850	HGT	(1680)	(1320)	(1200)	(1000)	(670)

21 ABRIL 2022

1/1 AEROPARQUE JORGE NEWBERY (SABE) RNP Z RWY 13

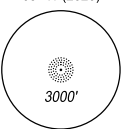
Seq Num	Fix Ident	Coordinates	Path Terminator	Fly Over	Distance (NM)	Course M°(T°)	Turn	Alt / Descr (ft/FL)	Speed Limit (Kt)	Navigation Specification	RNP
10	VANAR	S 34°19'28.00" W 058°45'44.00"	IF	N	N/A	N/A	N/A	+FL50	N/A	RNP APCH	1.0
20	BE176	S 34°26'09.87" W 058°37'24.20"	TF	N	9.6	143 (134.2)	N/A	+3000	N/A	RNP APCH	1.0
30	MUPER	S 34°27'33.49" W 058°35'39.95"	TF	N	2.0	143 (134.1)	N/A	+3000	N/A	RNP APCH	1.0
10	MUPER	S 34°27'33.49" W 058°35'39.95"	IF	N	N/A	N/A	N/A	+3000	N/A	RNP APCH	1.0
20	KABIS	S 34°30'21.84" W 058°30'39.35"	TF	N	5.0	133 (124.1)	N/A	+1700	N/A	RNP APCH	1.0
30	RW13	S 34°33'14.16" W 058°25'30.91"	TF	Y	5.1	133 (124.0)	N/A	@69	N/A	RNP APCH	0.3
40	BE076	S 34°34'42.24" W 058°22'52.99"	CF	N	2.6	133 (124.0)	N/A	N/A	N/A	RNP APCH	1.0
50	VERAS	S 34°35'36.56" W 058°10'26.83"	TF	N	10.3	104 (095.1)	N/A	+2200	N/A	RNP APCH	1.0
60	VERAS	S 34°35'36.56" W 058°10'26.83"	HM	Y	4.0	229 (219.1)	R	+3000	-210	RNP APCH	1.0

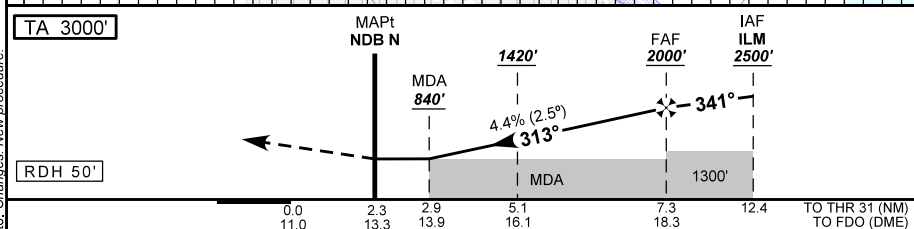
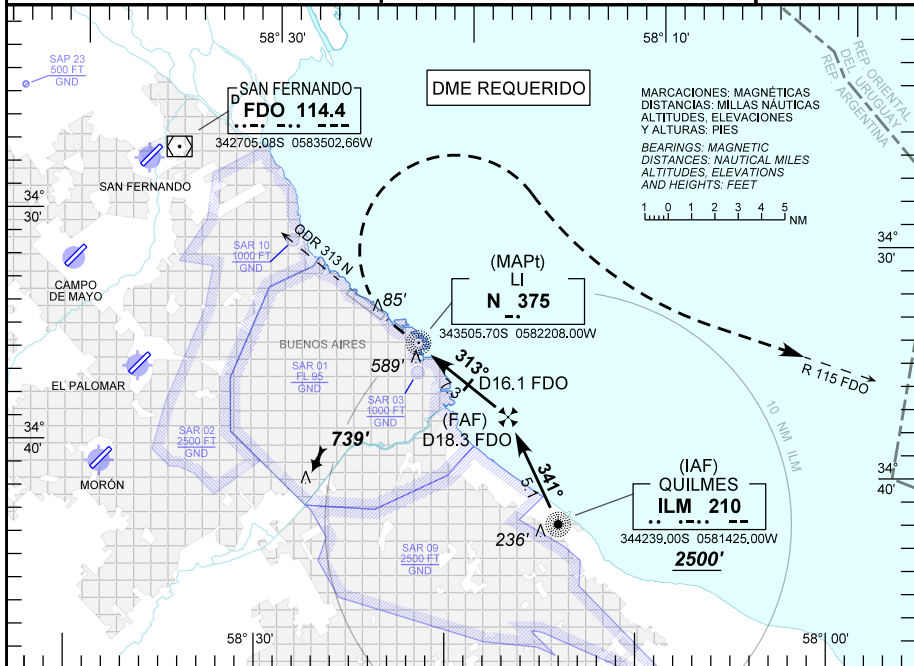
21 ABRIL 2022

AEROPARQUE JORGE NEWBERY (SABE)
BUENOS AIRES

Carta de aproximación por instrumentos
Instrument approach chart

NDB RWY 31

ATIS (ES) (EN) 127.60 127.90	AEROPARQUE APP 120.60 119.50	AEROPARQUE TWR 118.85 118.25 128.85	AEROPARQUE GND 121.90	EMERG 121.50
LI N 375	FINAL APCH CRS 313°	ALTITUD FAF 2000' (1980')	NDB MDA (H) 840' (820')	AD Elev 20' THR Elev 16'
Aproximación frustrada: ASC sobre "N" virar a la derecha para interceptar R 115 FDO hasta 3000 ft y seguir instrucciones del ATC. <i>Missed approach: Climb on "N" turn right to intercept R 115 FDO until 3000 ft and proceed as directed by ATC.</i>				 09° W (2020) MSA 25 NM ILM
NOTA: Árboles en las proximidades del THR 31.		NOTE: Trees in the vicinity to THR 31.		



DIRECTA RWY 31 / Straight in RWY 31				Circulación Visual			
CAT	NDB/DME			MDH 820'			Circle to land
	MDA 840'						
	VIS ALS			VIS SIN ALS			CAT
A	3600 M			4000 M			A
B	3800 M			4200 M			B
C							C
D							D

GS KT	90	110	130	150	160	DIST to THR	7.3	6	5.1	4	2.9
FAF - THR 7.3 NM	4:52	3:59	3:22	2:55	2:44	ALT	2000	1660	1420	1130	840
FPM	400	490	570	660	710	HGT	(1980)	(1640)	(1400)	(1110)	(820)

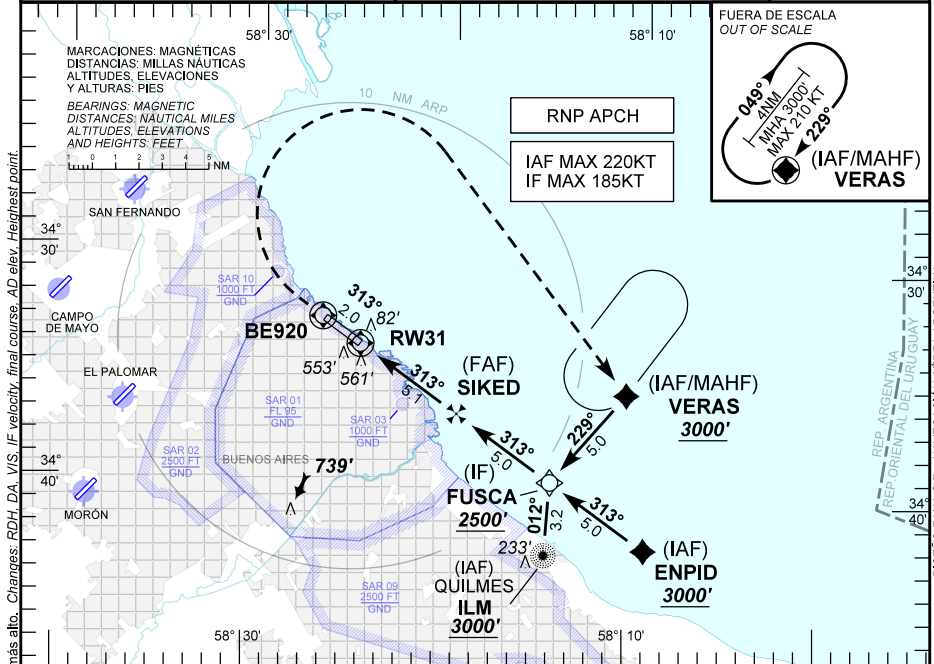
21 ABRIL 2022

AEROPARQUE JORGE NEWBERY (SABE)
BUENOS AIRES

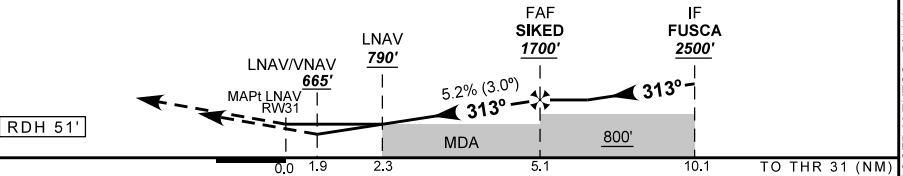
Carta de aproximación por instrumentos
 Instrument approach chart

RNP Z RWY 31

ATIS (ES) (EN) 127.60 127.90	AEROPARQUE APP 120.60 119.50	AEROPARQUE TWR 118.85 118.25 128.85	AEROPARQUE GND 121.90	EMERG 121.50
RNP	FINAL APCH CRS 313°	ALTITUD MNM SIKED 1700' (1680')	LNAV / VNAV DA(H) 665' (649')	AD Elev 20' THR Elev 16'
Aproximación frustrada: ASC sobre curso 313° hasta BE920, luego virar a la derecha DCT VERAS alcanzando 3000 ft, HLDG y seguir instrucciones del ATC. Missed approach: Climb on course 313° to BE920, then turn right DCT VERAS reaching 3000 ft, HLDG and proceed as directed by ATC.				<p>09° W (2020) 3000' MSA 25 NM ARP</p>
NOTA: Para sistemas Baro VNAV no compensados, debajo de -10°C o superior a 50°C, N.A. Árboles en las proximidades del THR 31.		NOTE: For uncompensated Baro VNAV systems N.A. below -10°C or above 50°C, N.A. Trees in the vicinity of THR 31.		



TA 3000'



CAT	DIRECTA RWY 31 / Straight in RWY 31				Circulación Visual						
	LNAV / VNAV		LNAV		Circle to land						
	DA 665'	DH 649'	MDA 790'	MDH 770'	CAT	MDA	MDH	VIS			
A	2600 M	3000 M	3400 M	3800 M	A	Circulación Visual N.A.	Circle to land N.A.				
B			3600 M	4000 M	B						
C					C						
D					D						
GS KT	90	110	130	150	160	DIST to MAPt	5.1	4	3.5	3	2.3
FAF - MAPt 5.1 NM	3:24	2:47	2:21	2:02	1:55	ALT	1700	1340	1180	1030	790
FPM	480	590	690	800	850	HGT	(1680)	(1320)	(1160)	(1010)	(770)

21 ABRIL 2022

1/2 Aeroparque Jorge Newbery (SABE) RNP Z RWY 31

Seq Num	Fix Ident	Coordinates	Path Terminator	Fly Over	Distance (NM)	Course M°(T°)	Turn	Alt / Descr (ft/FL)	Speed Limit (Kt)	Navigation Specification	RNP
10	ENPID	S 34°42'17.31" W 058°09'13.94"	IF	N	N/A	N/A	N/A	+3000	-220	RNP APCH	1.0
20	FUSCA	S 34°39'29.84" W 058°14'15.98"	TF	N	5.0	313 (303.9)	N/A	+2500	-185	RNP APCH	1.0
10	ILM	S 34°42'39.00" W 058°14'25.00"	IF	N	N/A	N/A	N/A	+3000	-220	RNP APCH	1.0
20	FUSCA	S 34°39'29.84" W 058°14'15.98"	TF	N	3.2	012 (02.2)	N/A	+2500	-185	RNP APCH	1.0
10	VERAS	S 34°35'36.56" W 058°10'26.83"	IF	N	N/A	N/A	N/A	+3000	-220	RNP APCH	1.0
20	FUSCA	S 34°39'29.84" W 058°14'15.98"	TF	N	5.0	229 (219.1)	N/A	+2500	-185	RNP APCH	1.0
10	FUSCA	S 34°39'29.84" W 058°14'15.98"	IF	N	N/A	N/A	N/A	+2500	-185	RNP APCH	1.0
20	SIKED	S 34°36'42.16" W 058°19'17.69"	TF	N	5.0	313 (303.9)	N/A	+1700	N/A	RNP APCH	1.0
30	RW31	S 34°33'49.97" W 058°24'26.74"	TF	Y	5.1	313 (304.0)	N/A	@67	N/A	RNP APCH	0.3
40	BE920	S 34°32'42.65" W 058°26'27.39"	CF	Y	2.0	313 (304.0)	N/A	N/A	N/A	RNP APCH	1.0

21 ABRIL 2022

2/2 Aeroparque Jorge Newbery (SABE) RNP Z RWY 31

Seq Num	Fix Ident	Coordinates	Path Terminator	Fly Over	Distance (NM)	Course M°(T°)	Turn	Alt / Descr (ft/FL)	Speed Limit (Kt)	Navigation Specification	RNP
50	VERAS	S 34°35'36.56" W 058°10'26.83"	DF	N	N/A	N/A	R	N/A	N/A	RNP APCH	1.0
60	VERAS	S 34°35'36.56" W 058°10'26.83"	HM	Y	4.0	229 (219.1)	R	+3000	-210	RNP APCH	1.0

21 ABRIL 2022