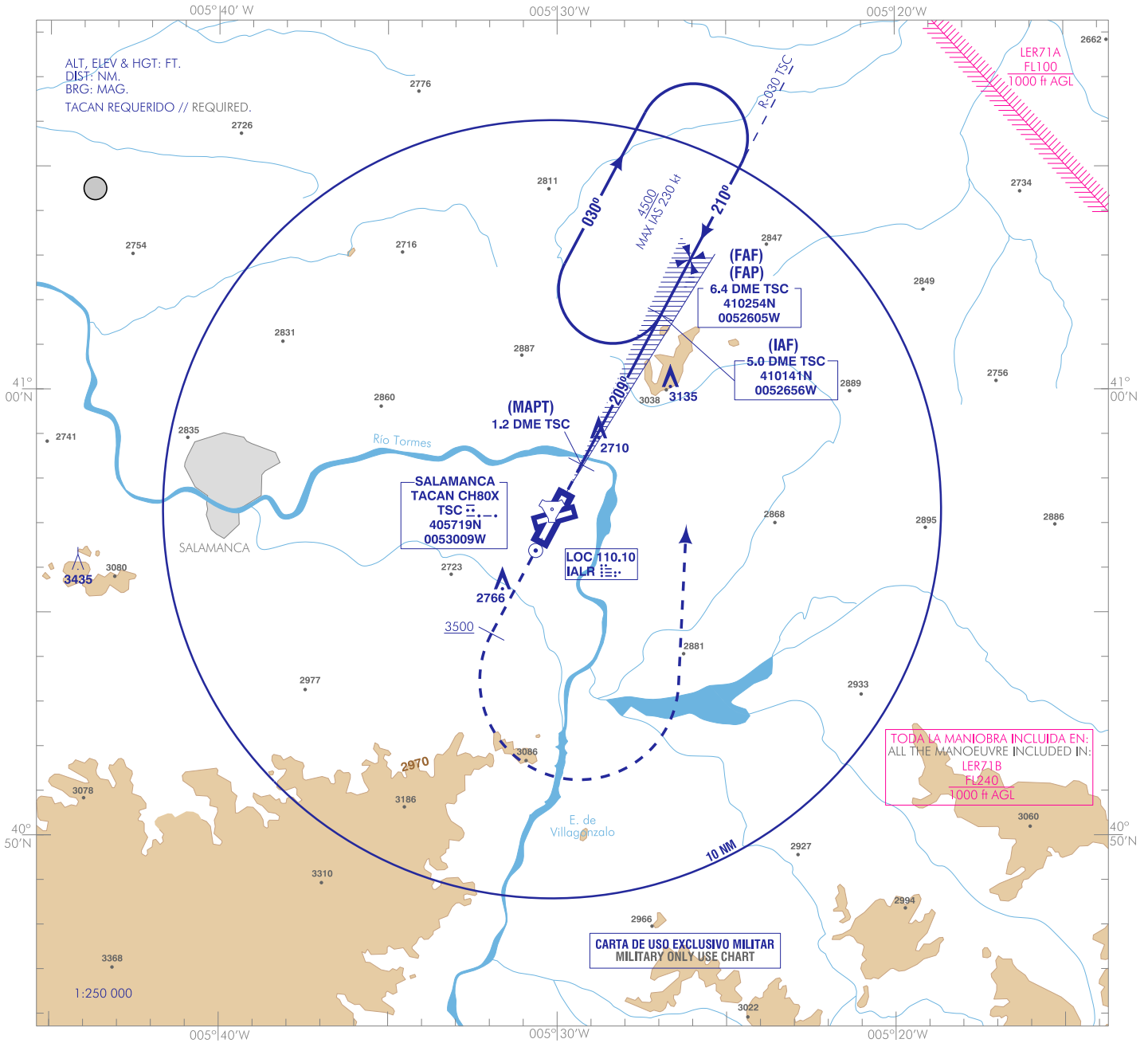


CARTA DE APROXIMACIÓN
POR INSTRUMENTOS-MIPS

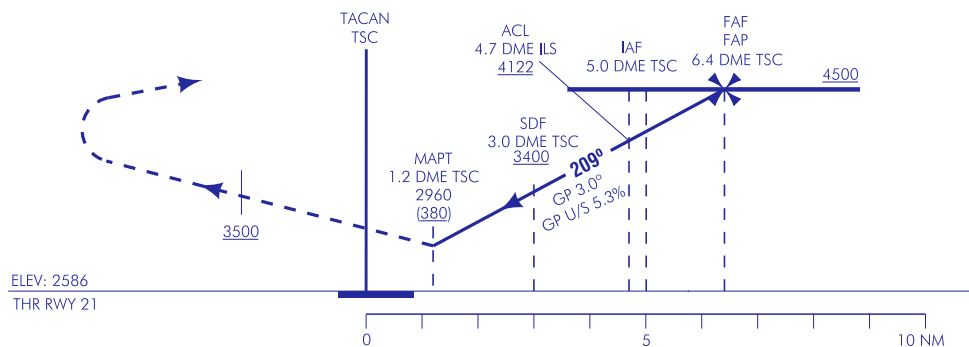
ELEV
2595
VAR 1°W (2020)

APP 140.100 MHz
TWR 139.300 MHz

SALAMANCA/Macatán
TACAN o ILS Y o LOC Y
RWY 21



FRUSTRADA: SUBIR DIRECTO A 3500, VIRAR A LA IZQUIERDA PARA INTERCEPTAR Y SEGUIR R-030 TSC E INTEGRARSE A LA ESPERA A 4500.
MISSED APCH: CLIMB DIRECT TO 3500, TURN LEFT TO INTERCEPT AND FOLLOW R-030 TSC TO JOIN THE HOLDING AT 4500.



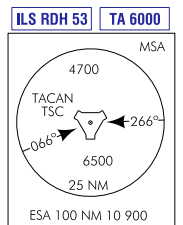
HGT REF ELEV THR RWY 21

CAT	A	B	C	D	HPMA
S-ILS	2786 / 0.8* (200) (200-0.8)		2786/1.2 (200) (200-1.2)	2797/1.2* (220) (300-1.2)	2786/1.2 (200) (200-1.2)
S-LOC		2960 / 1.2* (380) (400-1.2)		2960 / 1.6* (380) (400-1.6)	
S-TACAN		2960 / 1.2* (380) (400-1.2)		2960 / 1.6* (380) (400-1.6)	
CIRCUITO CIRCLING	3070/1.6 (480) (500-1.6)	3120/1.6 (530) (600-1.6)	3530/4.4 (940) (1000-4.4)	3530/4.8 (940) (1000-4.8)	3440/4.4 (850) (900-4.4)

* CUANDO ALS U/S INCREMENTAR VIS EN 0.4 km
* WHEN ALS U/S INCREASE VIS IN 0.4 km

GS	kt	80	100	120	140	160	180
FAP-THR:	min:is						
FAF-MAPT: 5.2 NM	min:is	3:54	3:07	2:36	2:14	1:57	1:44
ROD: 5.3 %	ft/min	429	536	643	750	857	964

ALT DME (TSC) FNA							
13	12	11	10	9	8	7	6
							4380 (1790)
							4060 (1470)
							3730 (1140)
							3410 (820)
							3090 (500)



CAMBIOS: RETIRADA L AL.
CHANGES: L AL WITHDRAWAL

INTENCIONADAMENTE EN BLANCO
INTENTIONALLY BLANK