

STANDARD DEPARTURE CHART - INSTRUMENT

RJCO / SAPPORO

SID

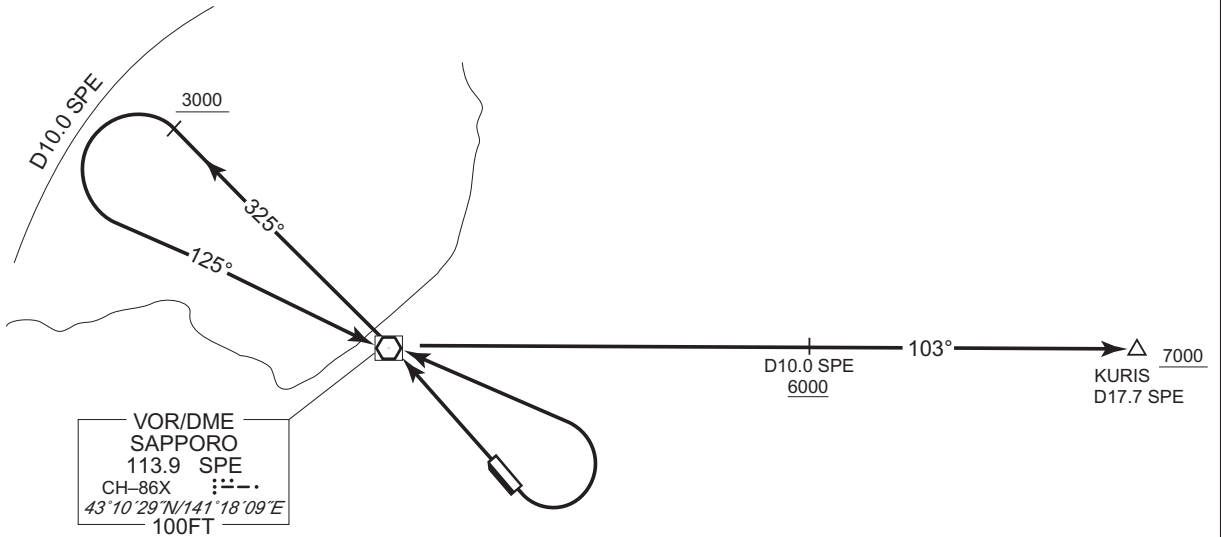
KURIS REVERSAL FOUR DEPARTURE

RWY 14 : Turn left,....

RWY 32 : ....

....climb direct to SPE VOR/DME, via SPE R325 until passing 3000 FT, turn left to intercept and proceed via SPE R305 to SPE VOR/DME within SPE 10.0DME, via SPE R103 to KURIS.

Cross SPE R103/10.0DME at or above 6000FT,  
cross KURIS at or above 7000FT.



CHANGE : Description of PROC.