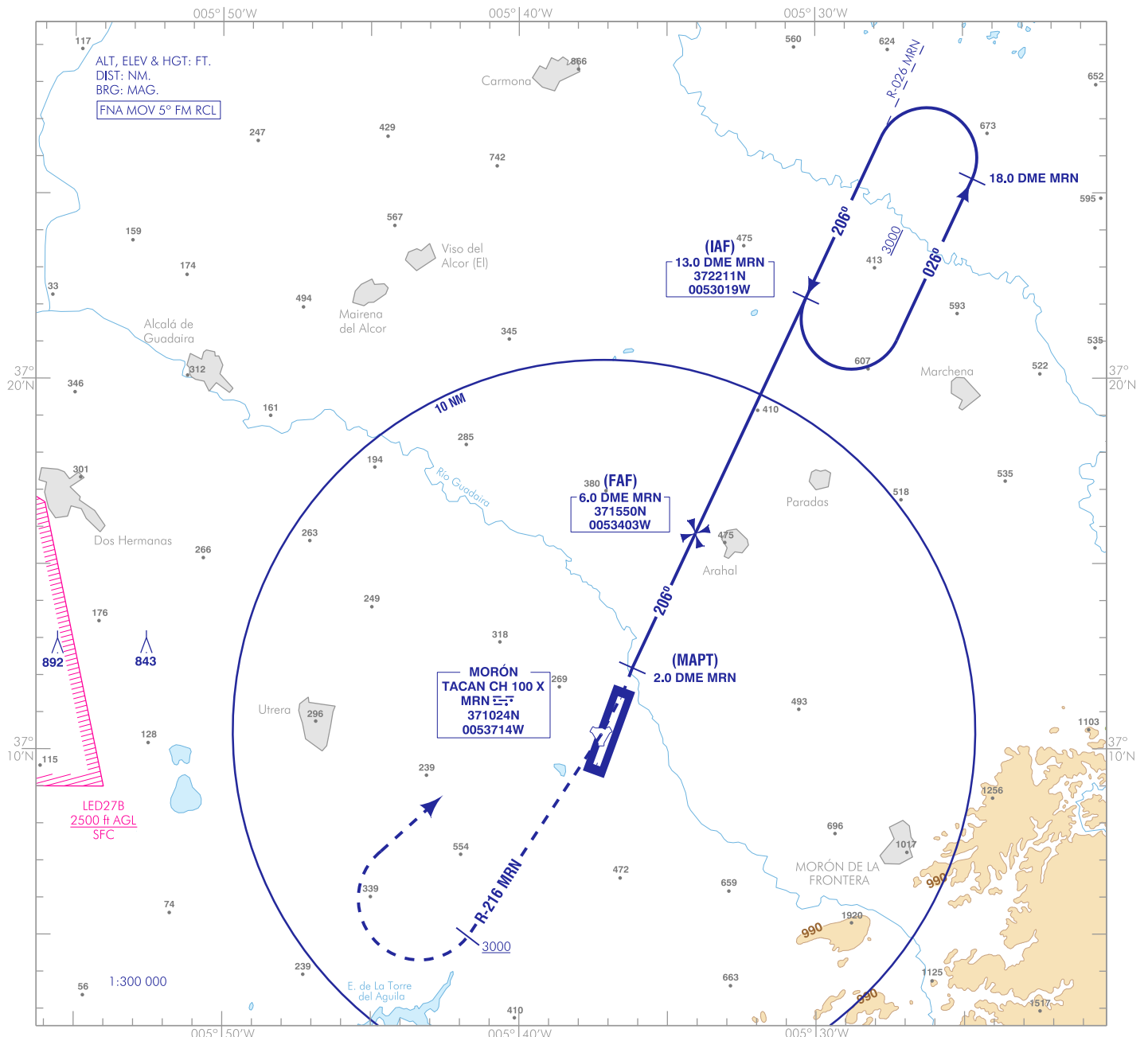


CARTA DE APROXIMACIÓN  
POR INSTRUMENTOS-MIPS

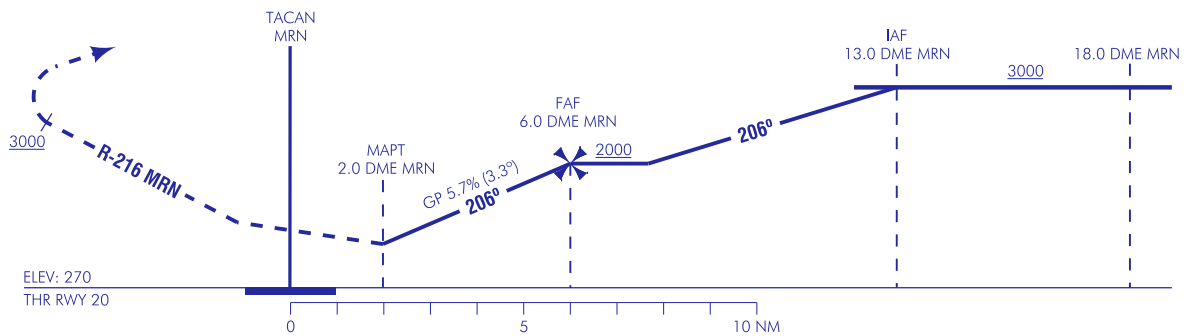
ELEV AD  
285  
VAR 1°W (2020)

APP 128.500 MHz  
TWR 139.300 MHz  
GMC 337.900 MHz

SEVILLA/Morón  
TACAN  
RWY 20



**FRUSTRADA:** GIRAR A LA DERECHA PARA INTERCEPTAR R-216 MRN A 3000 O SUPERIOR. GIRAR A LA DERECHA PARA INTERCEPTAR Y SEGUIR R-026 MRN HASTA IAF.  
**MISSED APCH:** TURN RIGHT TO INTERCEPT R-216 MRN TO REACHT 3000 OR ABOVE, TURN RIGHT TO INTERCEPT AND FOLLOW R-026 MRN TO IAF.



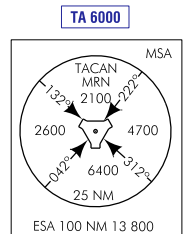
HGT REF ELEV THR RWY 20

CAT	A	B	C	D
<b>S-TACAN</b>	660/1.4* 390 (400-1.4)		680/1.5** 410 (500-1.5)	700/1.6** 430 (500-1.6)
<b>CIRCUITO CIRCLING</b>	800/1.5 530 (600-1.5)	800/1.6 530 (600-1.6)	910/2.9 640 (700-2.9)	1070/3.6 800 (800-3.6)

\* CUANDO ALS U/S INCREMENTAR VIS EN 0.1 km  
\*\* CUANDO ALS U/S INCREMENTAR VIS EN 0.4 km  
\* WHEN ALS U/S INCREASE VIS BY 0.1 km  
\*\* WHEN ALS U/S INCREASE VIS BY 0.4 km

GS	kt	80	100	120	140	160	180
<b>FAP-THR:</b>	min:s						
<b>FAF-MAPT: 4.0 NM</b>	min:s	3:00	2:24	2:00	1:43	1:30	1:20
<b>ROD: 5.7%</b>	ft/min	458	572	687	801	916	1030

ALT DME (MRN) FNA									
13	12	11	10	9	8	7	6	5	4
								1660	1310
								970	



CAMBIOS: NUEVA APROXIMACIÓN:  
CHANGES: NEW APPROACH.

**INTENCIONADAMENTE EN BLANCO**  
**INTENTIONALLY BLANK**