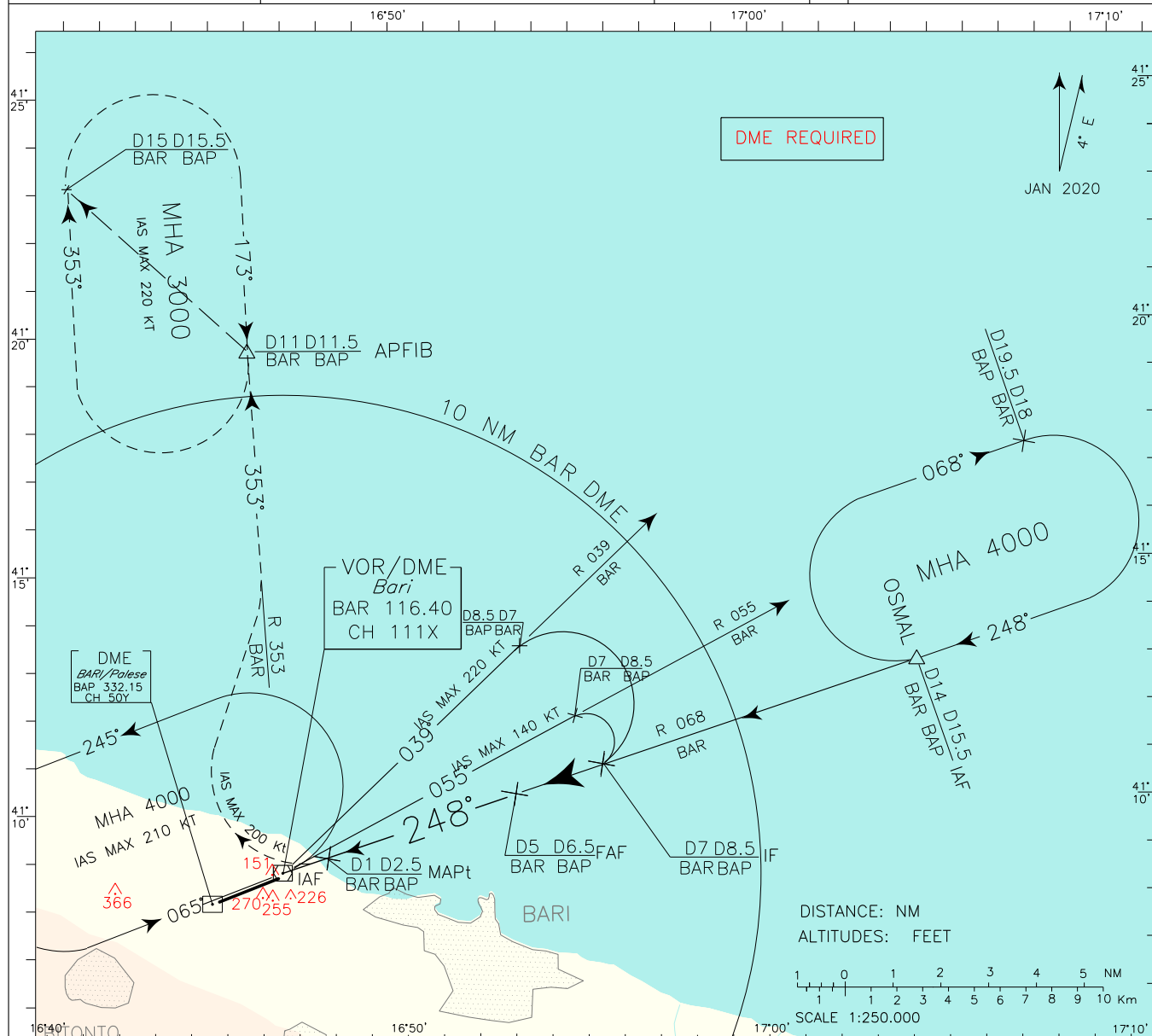


ICAO - INSTRUMENT APPROACH CHART

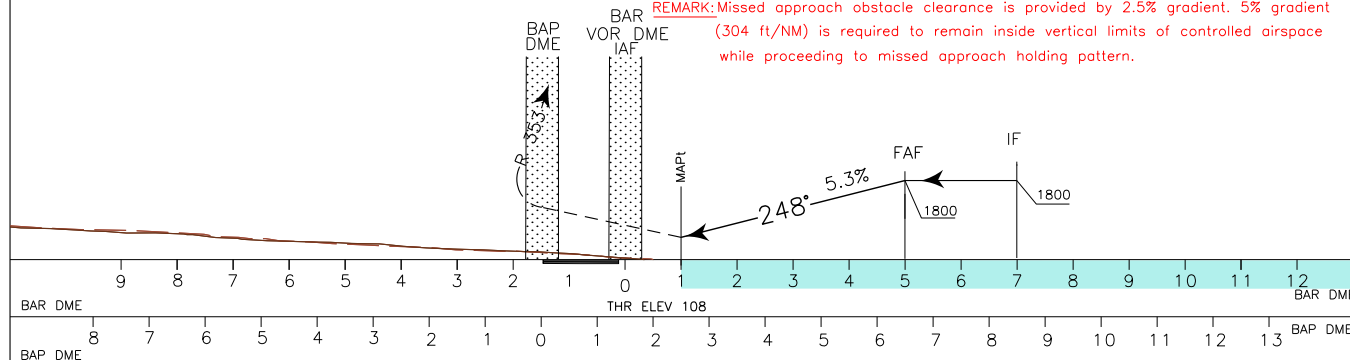
DOC 8168 ED 6 - 2014 AMDT 8

APP	Brindisi Radar	118.750 (133.025)	AD ELEV	L B D	BARI/ PALESE	
TWR	Bari TWR	118.300	193		VOR	RWY 25
ATIS	Bari ATIS Arrival and Departure Information	124.050				



**TRANSITION ALT 5000** MISSED APPROACH: Not later than 1 NM BAR DME (2.5 NM BAP DME) turn right (IAS MAX 200 kt) to join and follow RDL 353 BAR VOR climbing to 3000 ft. Hold between 11 NM and 15 NM BAR DME. Right turns (IAS MAX 220 kt).

**REMARK:** Missed approach obstacle clearance is provided by 2.5% gradient. 5% gradient (304 ft/NM) is required to remain inside vertical limits of controlled airspace while proceeding to missed approach holding pattern.



STRAIGHT IN APPROACH	OCA (OCH)				CIRCLING SECTOR (* REMARK: IAS MAX 195 KT	FT MIN	GS	B A R D M E	ALT (HGT)	MNM SECT ALT
	A	B	C	D						
VOR	520(412)					425	80	5	1800(1692)	
						531	100	4	1480(1372)	
						637	120	3	1160(1052)	
						743	140	2	840(732)	
						849	160	1	520(412)	
CIRCLING (*) NORTH OF RWY ONLY	850(657)	950(757)	1090(897)							